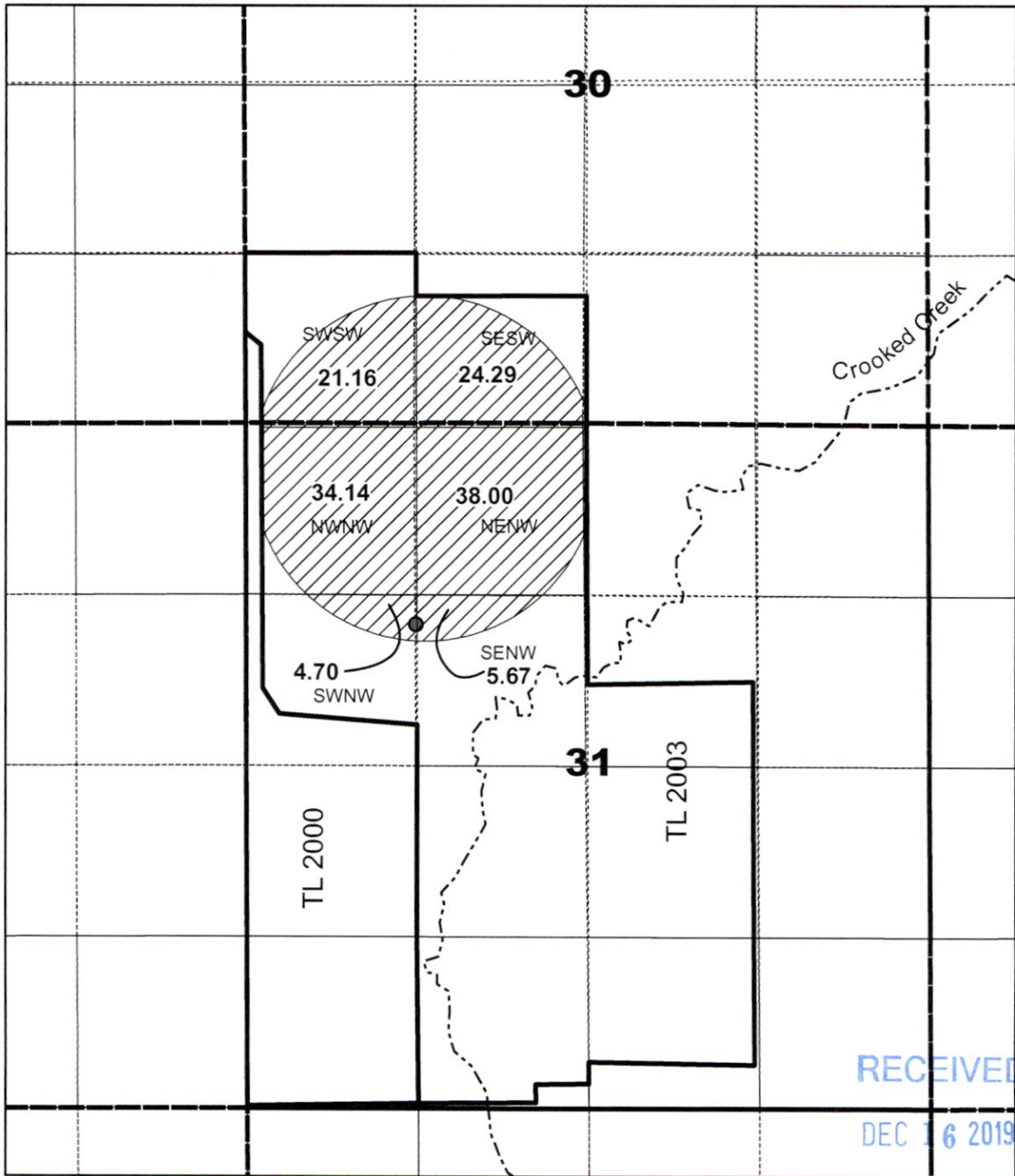


Permit Amendment
 Permit G-17746
 Dennis Flynn Ranch


T 35 S, R 21 E, WM
 Sec 30 & 31



Authorized POA
 Lake 52274
 South 1395 ft
 East 1324 ft
 From NW Cor. Sec. 31
 T 35 S, R 21 E, WM.

New POA
 Lake 52807
 South 1463 ft
 East 1314 ft
 From NW Cor. Sec 31
 T 35 S, R 21 E, WM

Legend

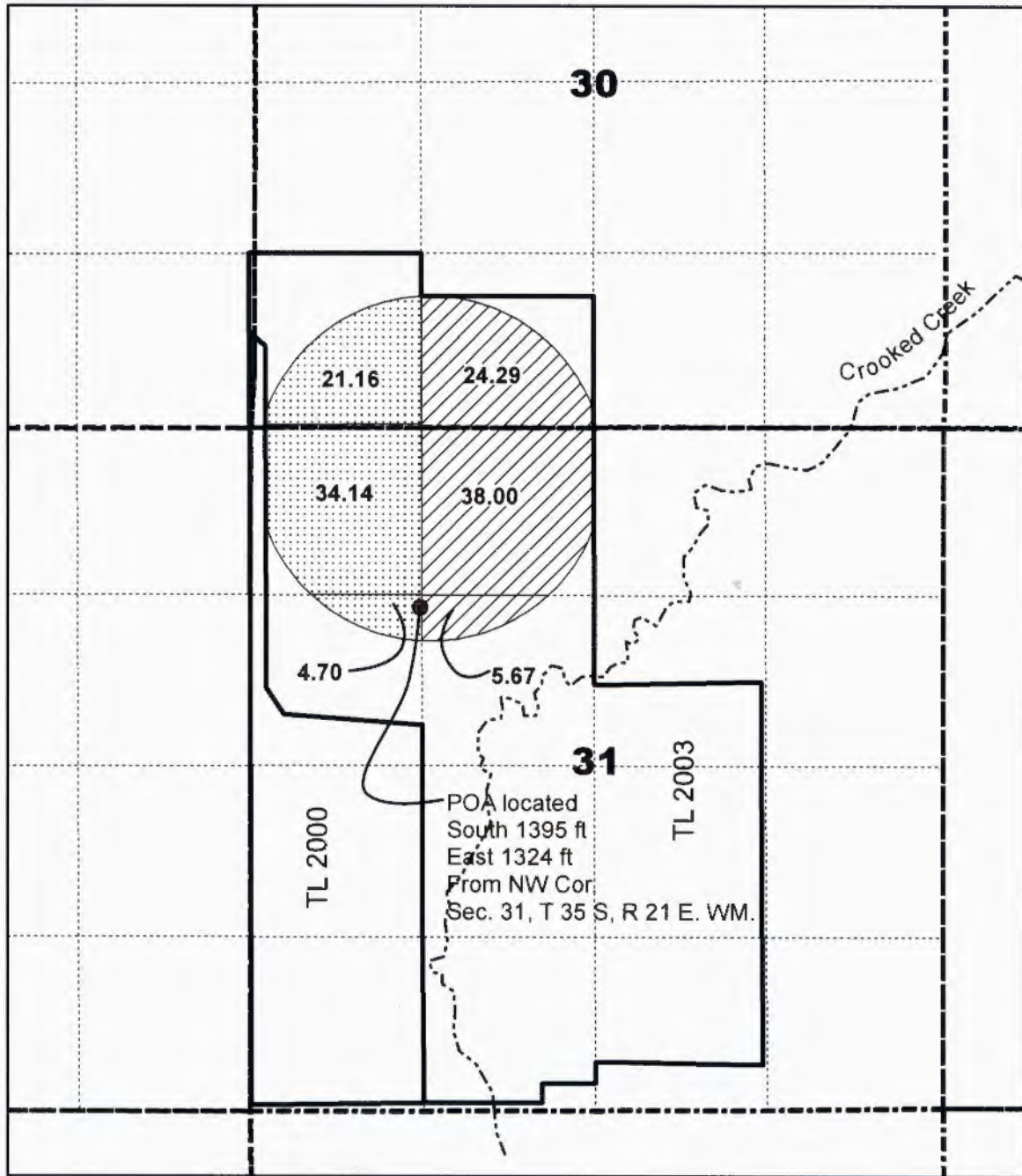
- Crooked Creek
-  Primary
- Well location





1 inch = 1,320 feet

13317 -

Dennis Flynn Ranch



Legend

- Crooked Creek
-  Supp to C 55519
-  Primary
- Well location



1 inch = 1,320 feet

RECEIVED BY OWRD

JUN 10 2015

SALEM, OR

G-18102