

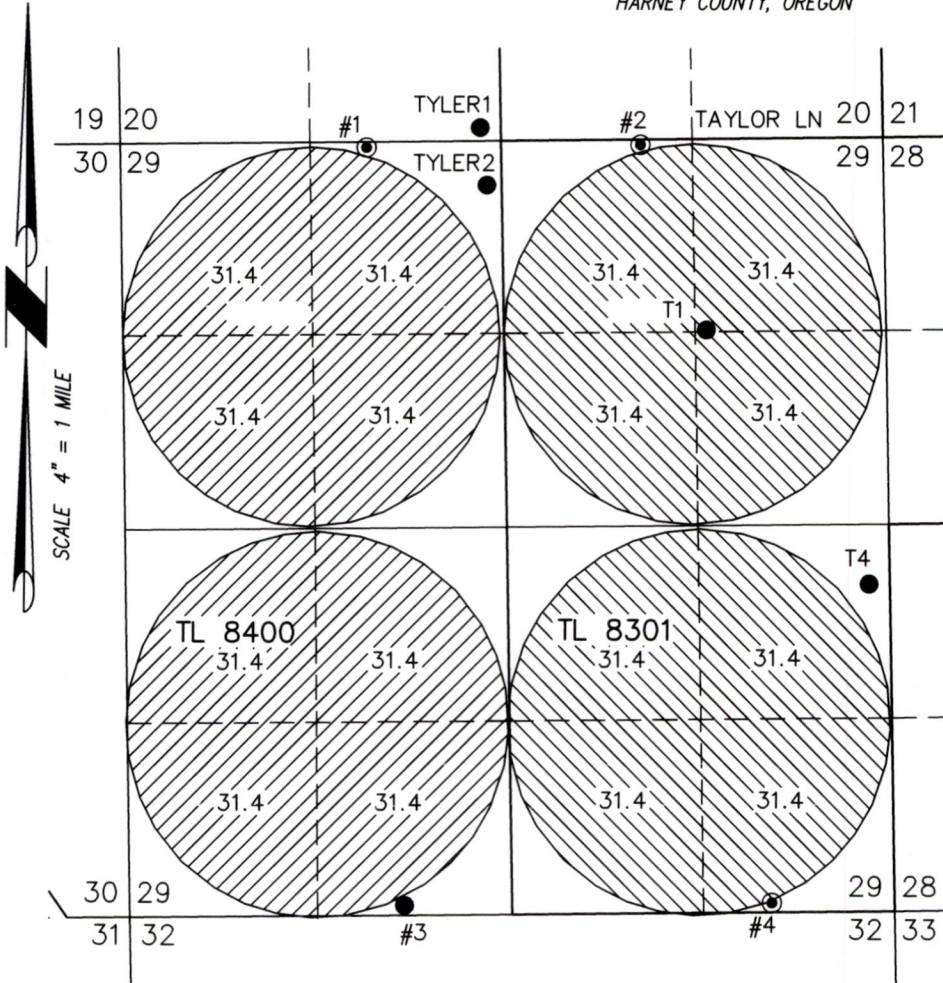
# MAP TO ACCOMPANY APPLICATION TO CHANGE AND ADD POINTS OF APPROPRIATION ON PERMIT G-16663 FOR JESSE VAN DE STROET

RECEIVED

MAY 22 2019

OWRD

TAX LOTS 8301 & 8400  
IN SECTION 29, TOWNSHIP 24 SOUTH, RANGE 32.5 EAST, W.M.  
HARNEY COUNTY, OREGON



- #1 IN THE NE 1/4 OF THE NW 1/4 SECTION 29 & 2610' NORTH & 925' WEST FROM THE C 1/4 CORNER SECTION 29. REPLACED BY TYLER2.
- #2 IN THE NW 1/4 OF THE NE 1/4 SECTION 29 & 2610' NORTH & 960' EAST FROM THE C 1/4 CORNER SECTION 29. REPLACED BY T1 - T6 SEE NOTE BELOW
- #3 IN THE SE 1/4 OF THE SW 1/4 SECTION 29 & 2580' SOUTH & 740' WEST FROM THE C 1/4 CORNER SECTION 29.
- #4 IN THE SE 1/4 OF THE SE 1/4 SECTION 29 & 2580' SOUTH & 1785 EAST FROM THE C 1/4 CORNER SECTION 29. REPLACED BY T1 - T6 SEE NOTE BELOW

- TYLER1 IN THE SE 1/4 OF THE SW 1/4 SECTION 20 & 90' NORTH & 140' WEST FROM THE S 1/4 CORNER SECTION 20.
- TYLER2 IN THE NE 1/4 OF THE NW 1/4 SECTION 29 & 300' SOUTH & 100' WEST FROM THE N 1/4 CORNER SECTION 29.

251.2 ACRES IR FROM PERMIT G-16663 TO T1-T6, AS SHOWN ON SEPERATE SHEET. RATE 1/80 CFS/ACRE DUTY 3.0 AF/ACRE

251.2 ACRES IR FROM PERMIT G-16663 TO #3, TYLER1, & TYLER2, AS SHOWN RATE 1/80 CFS/ACRE DUTY 3.0 AF/ACRE

\* SEE ACCOMPANYING SHEET SHOWING WELLS:  
T1, T2, T3, T4, T5, AND T6

THIS MAP IS FOR THE PURPOSE OF LOCATING A WATER RIGHT ONLY AND HAS NO INTENT TO PROVIDE LEGAL DIMENSIONS OR THE LOCATION OF PROPERTY LINES.

PROJECT No. 17-132

PREPARED AT THE REQUEST OF:  
JESSE VAN DE STROET  
1524 29TH STREET  
INWOOD, IA 51240

**ALL POINTS ENGINEERING  
& SURVEYING, INC.**



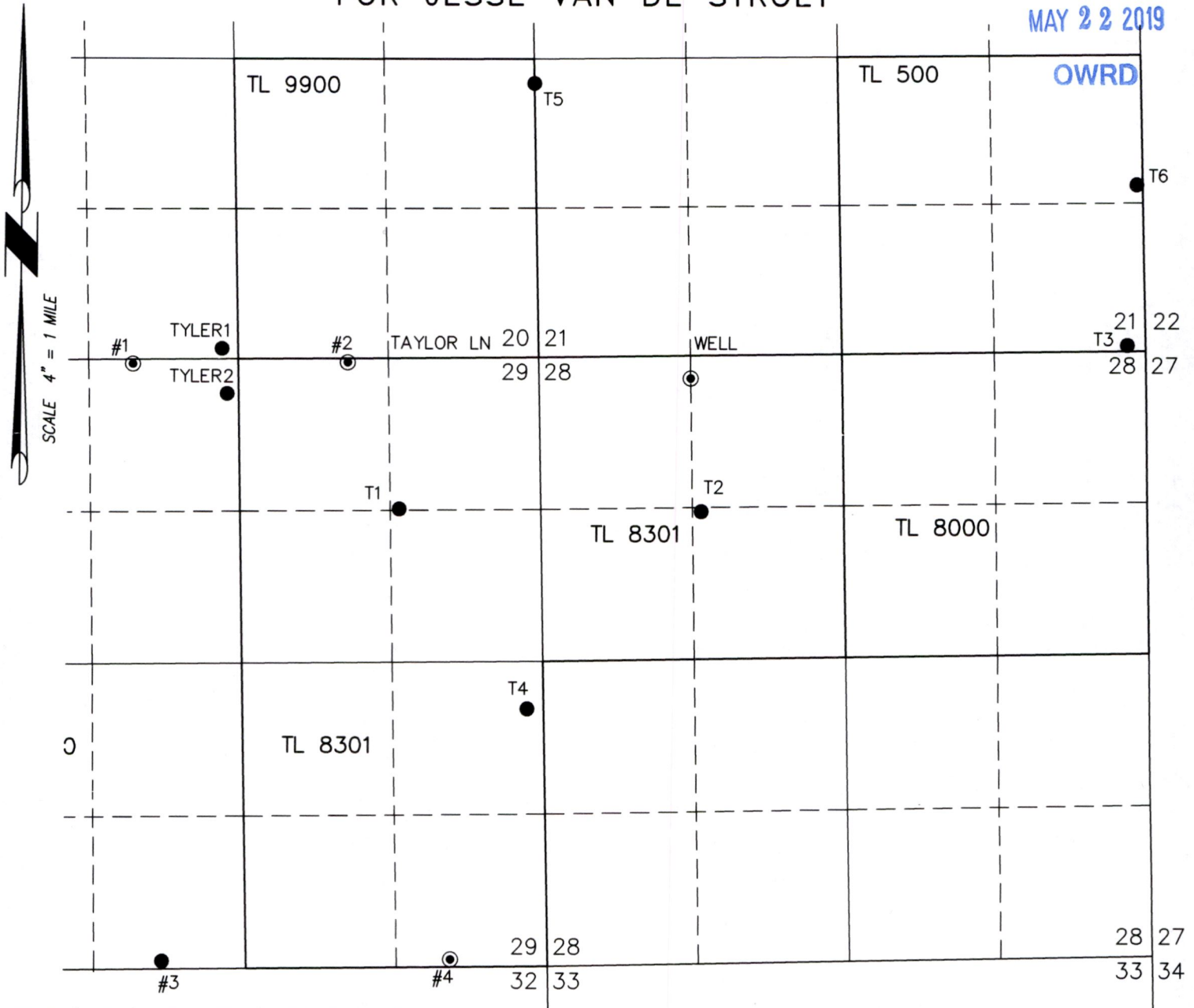
P.O. BOX 767  
TERREBONNE, OREGON 97760  
(541) 548-5833 PH  
scott@apeands.com  
www.APEandS.com

13188

# MAP TO ILLUSTRATE LOCATIONS OF WELLS FOR JESSE VAN DE STROET

RECEIVED

MAY 22 2019



- T1 'GUND2' IN THE NE 1/4 OF THE NE 1/4 SECTION 29 & 1335' NORTH & 1395' EAST FROM THE C 1/4 CORNER SECTION 29.
- T2 'GREG3' IN THE SE 1/4 OF THE NW 1/4 SECTION 28 & 1355' SOUTH & 1400' EAST FROM THE NW CORNER SECTION 28.
- T3 IN THE SE 1/4 OF THE SE 1/4 SECTION 21 & 50' NORTH & 160' WEST FROM THE SE CORNER SECTION 21.

- T4 'GUND4' IN THE NE 1/4 OF THE SE 1/4 SECTION 29 & 410' SOUTH & 2490' EAST FROM THE C 1/4 CORNER SECTION 29.
- T5 'CULP1' IN THE NE 1/4 OF THE SE 1/4 SECTION 20 & 2385' NORTH & 2630' EAST FROM THE 1/4 CORNER BETWEEN SECTIONS 20 & 29.
- T6 'CULP2' IN THE NE 1/4 OF THE SE 1/4 SECTION 21 & 1130' SOUTH & 50' WEST FROM THE 1/4 CORNER BETWEEN SECTIONS 21 & 22.

PROJECT No. 17-132

PREPARED AT THE REQUEST OF:  
 JESSE VAN DE STROET  
 1524 29TH STREET  
 INWOOD, IA 51240



**ALL POINTS ENGINEERING  
& SURVEYING, INC.**

P.O. BOX 767  
 TERREBONNE, OREGON 97760  
 (541) 548-5833 PH  
 scott@apeands.com  
 www.APEandS.com

**13188**