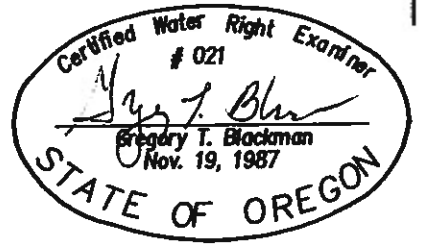
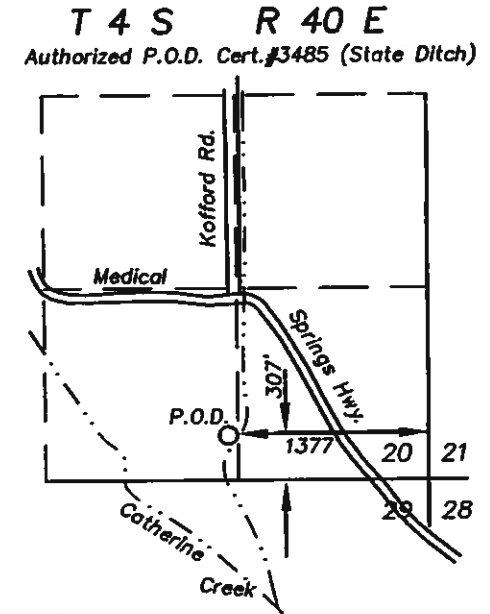
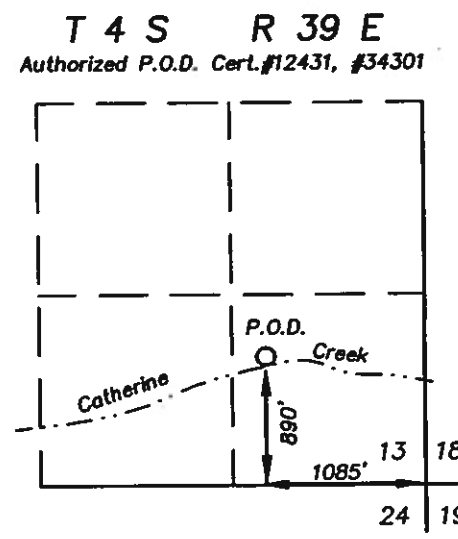
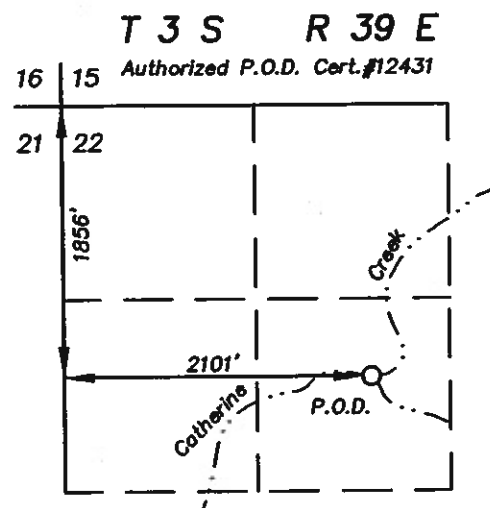
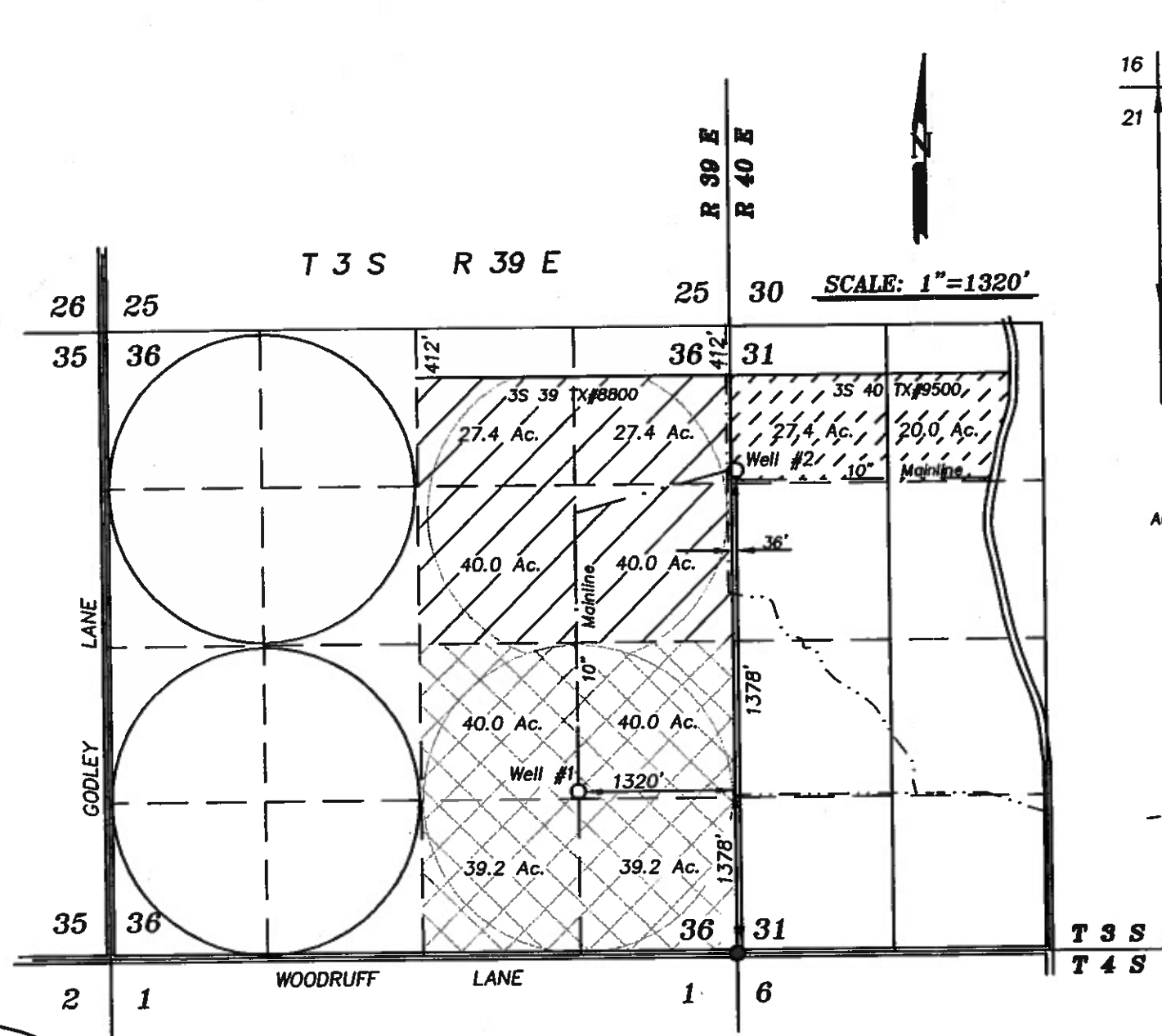





RECEIVED

AUG 19 2005

WATER RESOURCES DEPT  
SALEM, OREGON



-  Lands with primary rights from Certificate 12431, requesting supplemental rights from a wells 1 and 2.
-  Lands with primary rights from Certificate 34301, requesting supplemental rights from wells 1 and 2.
-  Lands with primary rights from Certificate 3485, requesting supplemental rights from wells 1 and 2.

NOTE: The preparation of this map was for the purpose of identifying the location of the proposed water right and has no intent to provide dimensions or location of property ownership lines. Location information shown hereon was furnished by the applicant.

August 9, 2005  
**APPLICATION MAP OF  
 WATER RIGHTS FROM  
 A NEW WELL**  
 FOR  
**MIKE BECKER**

BY  
**BAGETT - GRIFFITH & BLACKMAN**  
 2006 ADAMS AVENUE  
 LAGRANDE, OREGON 97850

Application No. \_\_\_\_\_

Permit Number \_\_\_\_\_

app no G-16512

-20

188.42 ac.

4000  
808.08 ac.

4000

5-7

NO 1316

3901  
632.64 ac.

4000

LADD

CR

4000

3901

N 89° 12' W  
73.68 CM

43C2

RECEIVED

23

5-6

5400  
711.17 ac.

AUG 19 2005

WATER RESOURCES DEPT  
SALEM, OREGON

5600  
159.09 Ac.

5901  
159.09 ac.

24

15-6

RECEIVED

DEC 16 2004

WATER RESOURCES DEPT  
SALEM, OREGON

5700  
120.00 Ac.

5800  
158.18 Ac.

5900  
316.18 ac.

S 89° 30' W  
79.60 CM

N 89° 12' W  
73.68 CM

15-3

FOR PARCEL 1

6200  
1805.45 ac.

6200

6000  
8200 ac.

CO RD 115 (UNDEVELOPED RD)

26

PLAT

28

CREEK

ROAD

RD. 115

PARTITION

CO

1993-05

6100  
185.00 Ac.

6700  
153.45 Ac.

6601  
158.18 ac.

8300  
39.09 Ac.

8400  
40.00 ac.

THIS MAP IS FURNISHED TO ASSIST IN  
LOCATING PREMISES. IT IS NOT A  
SURVEY, AND NO LIABILITY IS ASSUMED  
FOR ANY ERRORS THEREON.  
THE ABSTRACT & TITLE CO.

15-9

8800  
135.00 Ac.

HAWKINS

(UNDEVELOPED CO)

NO

RD.

GODLEY

(UNDEVELOPED WILKINSON LN)

8000

8100  
88.85 ac.

8200  
9.58 ac.

6200

(UNDEVELOPED)

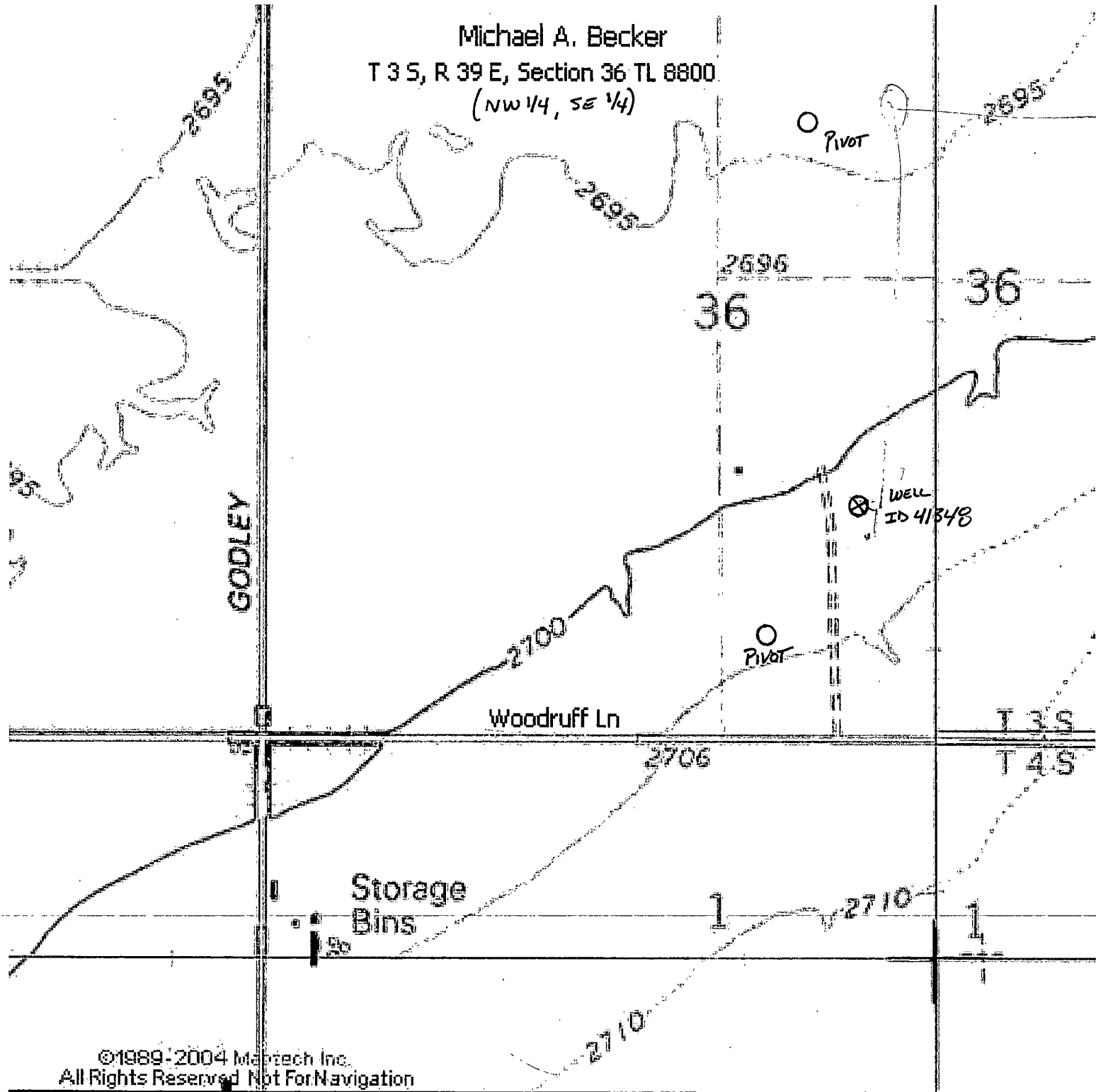
8600  
314.57 ac.

5-8

6200

FOR  
PARCEL 1  
CO.

REV



Michael A. Becker  
 T 3 S, R 39 E, Section 36 TL 8800  
 (NW 1/4, SE 1/4)

GODLEY

Woodruff Ln

Storage  
 Bins

Pivot

Pivot

WELL  
 ID 41348

2696  
 36

36

2706

T 3 S  
 T 4 S

2710

2710

©1989-2004 Maptech Inc.  
 All Rights Reserved Not For Navigation

RECEIVED

AUG 19 2005

WATER RESOURCES DEPT  
 SALEM, OREGON

RECEIVED

DEC 16 2004

WATER RESOURCES DEPT  
 SALEM, OREGON