

Application for a Groundwater Permit in the Name of Port of Portland for Portland International Airport
Proposed Points of Appropriation and Place of Use
Option 6
 Township 1 North, Range 2 East (W.M.)

- LEGEND**
- ⊙ Proposed Point of Appropriation (POA)
 - ⊕ Injection Well
 - Donation Land Claim (DLC)
 - All Other Features**
 - ▭ Tax Lot
 - Railroad
 - Major Road
 - ~ Watercourse
 - Waterbody

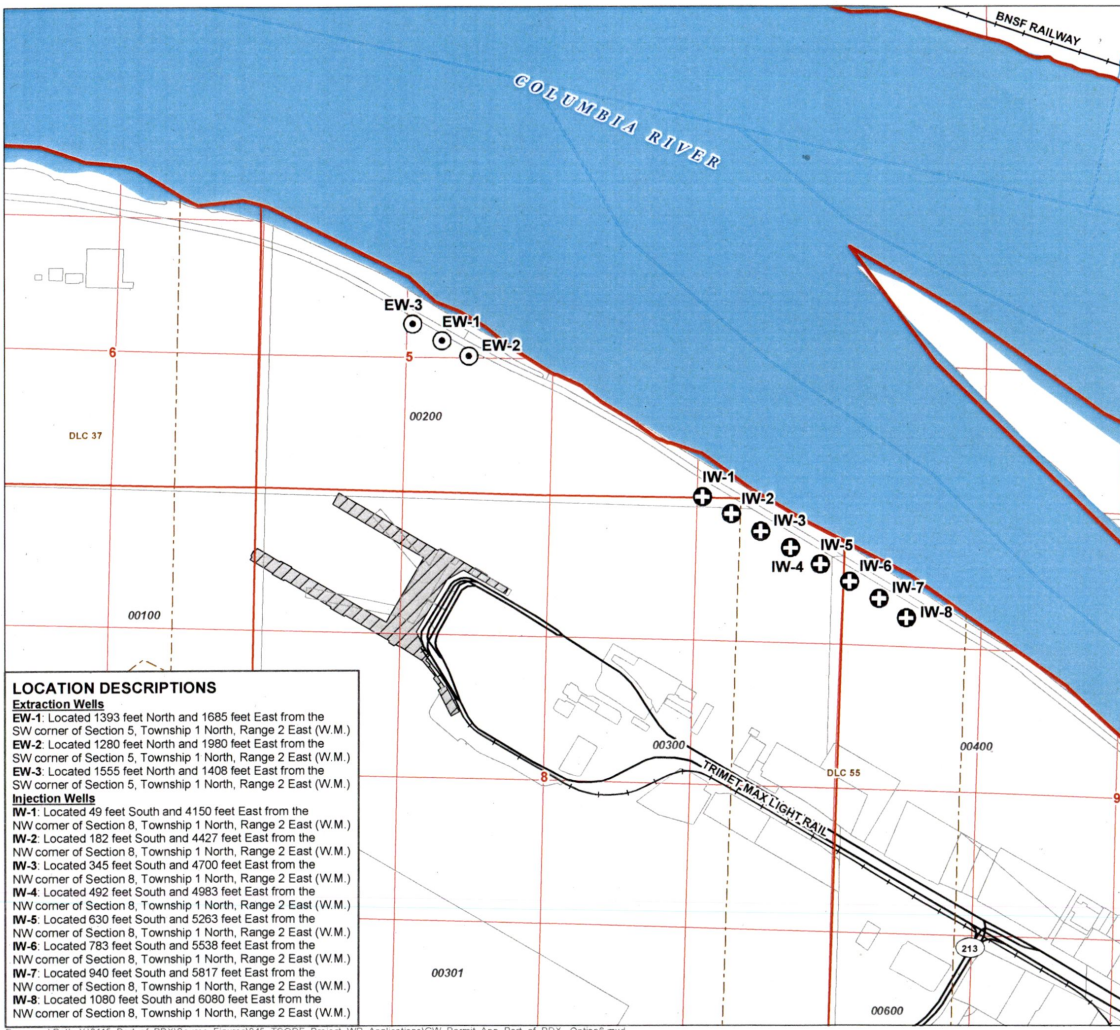
RECEIVED
 MAR 05 2019
 OWRD

DISCLAIMER
 This map was prepared for the purpose of identifying the location of a water right only and it is not intended to provide legal dimensions or location of property ownership lines.

N

0 660 1,320
 1 inch = 1,320 feet

Date: February 15, 2019
 Data Sources: METRO, OGIC, OWRD, USGS, ESRI



LOCATION DESCRIPTIONS

Extraction Wells

EW-1. Located 1393 feet North and 1685 feet East from the SW corner of Section 5, Township 1 North, Range 2 East (W.M.)

EW-2. Located 1280 feet North and 1980 feet East from the SW corner of Section 5, Township 1 North, Range 2 East (W.M.)

EW-3. Located 1555 feet North and 1408 feet East from the SW corner of Section 5, Township 1 North, Range 2 East (W.M.)

Injection Wells

IW-1. Located 49 feet South and 4150 feet East from the NW corner of Section 8, Township 1 North, Range 2 East (W.M.)

IW-2. Located 182 feet South and 4427 feet East from the NW corner of Section 8, Township 1 North, Range 2 East (W.M.)

IW-3. Located 345 feet South and 4700 feet East from the NW corner of Section 8, Township 1 North, Range 2 East (W.M.)

IW-4. Located 492 feet South and 4983 feet East from the NW corner of Section 8, Township 1 North, Range 2 East (W.M.)

IW-5. Located 630 feet South and 5263 feet East from the NW corner of Section 8, Township 1 North, Range 2 East (W.M.)

IW-6. Located 783 feet South and 5538 feet East from the NW corner of Section 8, Township 1 North, Range 2 East (W.M.)

IW-7. Located 940 feet South and 5817 feet East from the NW corner of Section 8, Township 1 North, Range 2 East (W.M.)

IW-8. Located 1080 feet South and 6080 feet East from the NW corner of Section 8, Township 1 North, Range 2 East (W.M.)

Document Path: Y:\0115_Port_of_PDX\Source_Figures\045_TCORE_Project_WR_Applications\GW_Permit_App_Port_of_PDX_Option6.mxd

G-18798

Application for a Groundwater Permit in the Name of Port of Portland for Portland International Airport

Proposed Points of Appropriation and Place of Use Scenario 7B - 7P

Township 1 North, Range 2 East (W.M.)

LEGEND

- ⊙ Proposed Point of Appropriation (POA)
- ⊕ Injection Well
- ▨ Proposed Place of Use (POU)
- All Other Features**
- ⊞ Tax Lot
- Railroad
- Major Road
- Watercourse
- Waterbody

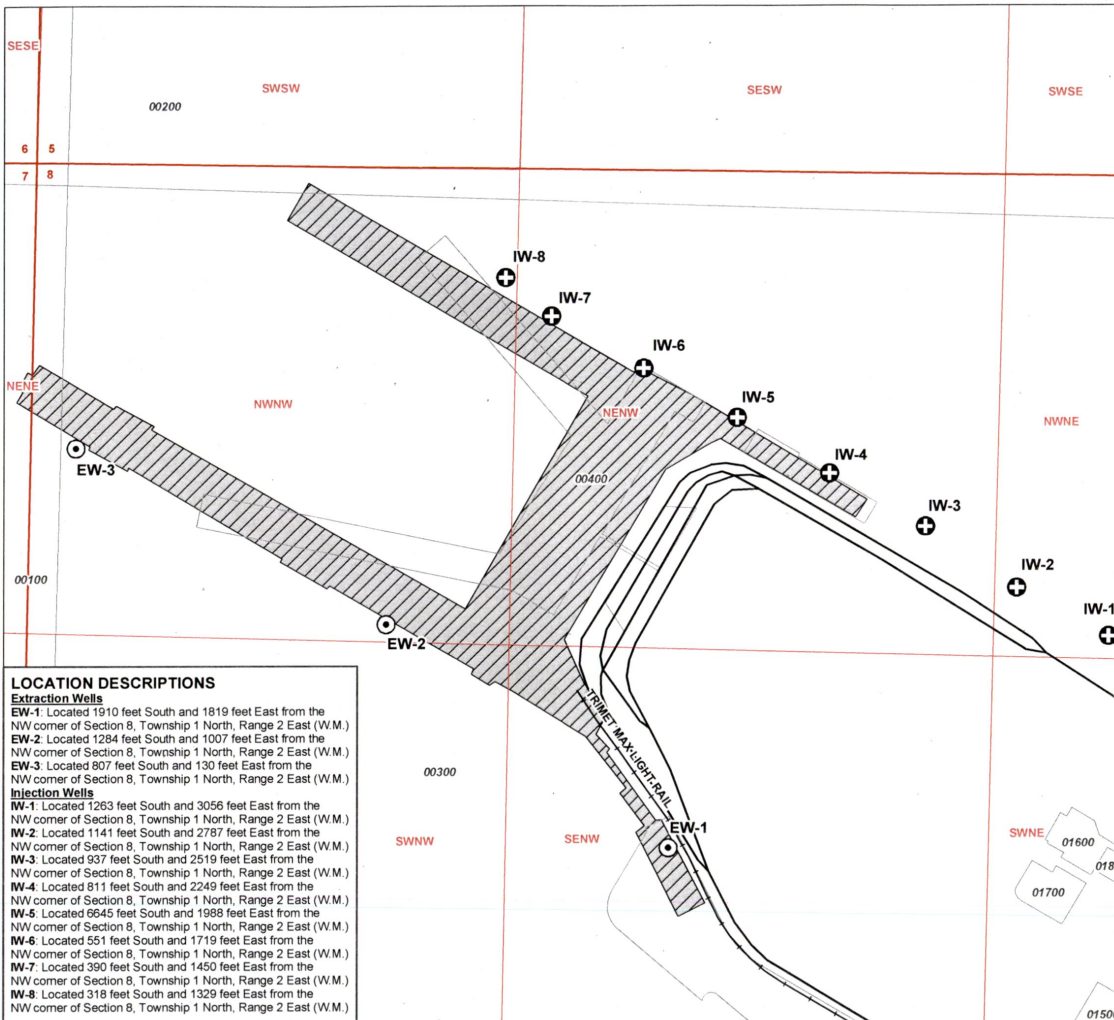
RECEIVED
MAR 05 2019
OWRD

DISCLAIMER

This map was prepared for the purpose of identifying the location of a water right only and it is not intended to provide legal dimensions or location of property ownership lines.



Date: February 20, 2019
Data Sources: METRO, OGIC, OWRD, USGS, ESRI



LOCATION DESCRIPTIONS

Extraction Wells

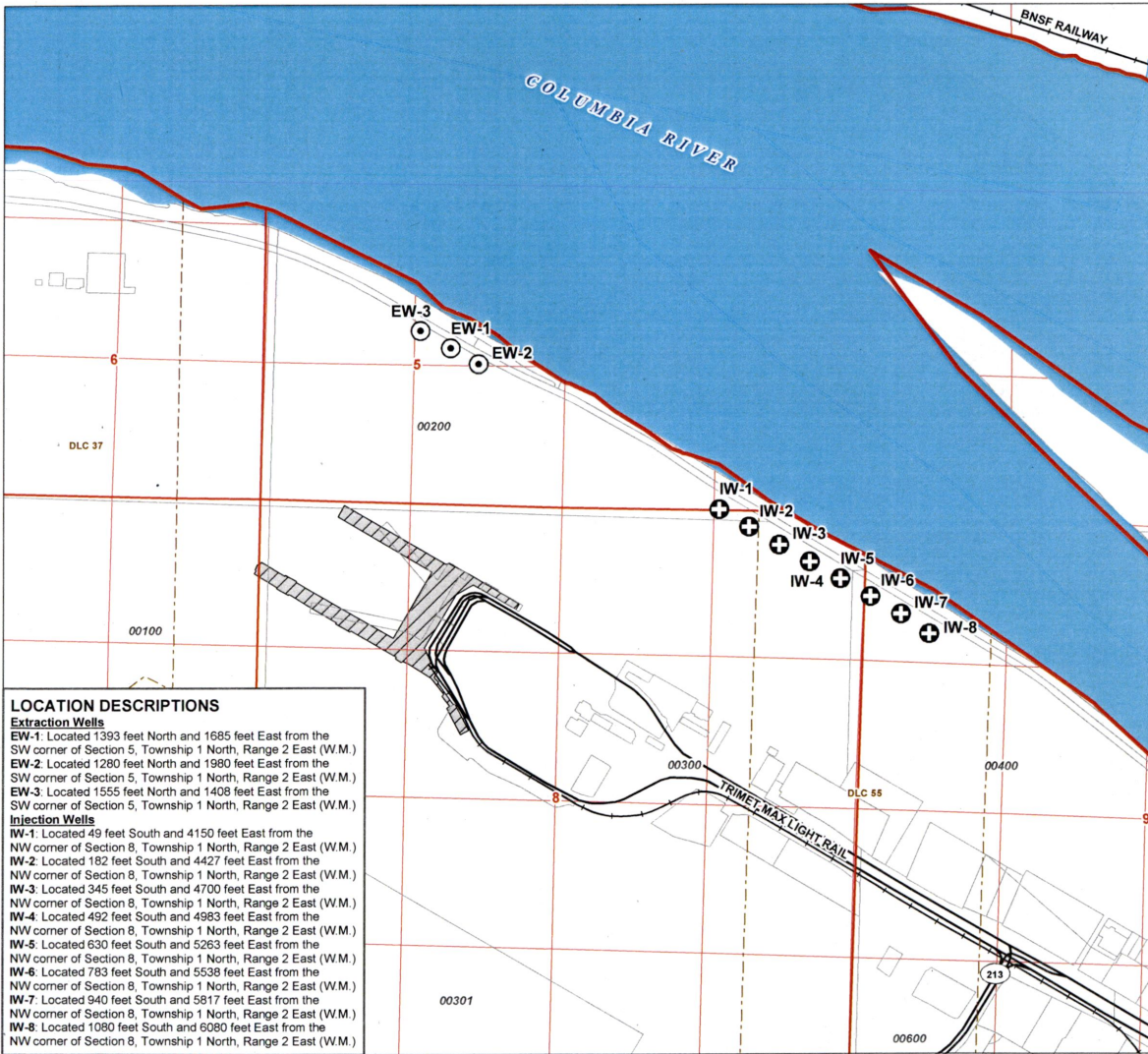
EW-1: Located 1910 feet South and 1819 feet East from the NW corner of Section 8, Township 1 North, Range 2 East (W.M.)
EW-2: Located 1284 feet South and 1007 feet East from the NW corner of Section 8, Township 1 North, Range 2 East (W.M.)
EW-3: Located 807 feet South and 130 feet East from the NW corner of Section 8, Township 1 North, Range 2 East (W.M.)

Injection Wells

IW-1: Located 1263 feet South and 3056 feet East from the NW corner of Section 8, Township 1 North, Range 2 East (W.M.)
IW-2: Located 1141 feet South and 2787 feet East from the NW corner of Section 8, Township 1 North, Range 2 East (W.M.)
IW-3: Located 937 feet South and 2519 feet East from the NW corner of Section 8, Township 1 North, Range 2 East (W.M.)
IW-4: Located 811 feet South and 2249 feet East from the NW corner of Section 8, Township 1 North, Range 2 East (W.M.)
IW-5: Located 6645 feet South and 1988 feet East from the NW corner of Section 8, Township 1 North, Range 2 East (W.M.)
IW-6: Located 551 feet South and 1719 feet East from the NW corner of Section 8, Township 1 North, Range 2 East (W.M.)
IW-7: Located 390 feet South and 1450 feet East from the NW corner of Section 8, Township 1 North, Range 2 East (W.M.)
IW-8: Located 318 feet South and 1329 feet East from the NW corner of Section 8, Township 1 North, Range 2 East (W.M.)

Document Path: Y:\0115_Port_of_PDX\Source_Figures\045_TCORE_Project_WR_Applications\GW_Permit_App_Port_of_PDX_7B-7P.mxd

G-18798



Application for a Groundwater Permit in the Name of Port of Portland for Portland International Airport
Proposed Points of Appropriation and Place of Use
Option 6
 Township 1 North, Range 2 East (W.M.)

- LEGEND**
- ⊙ Proposed Point of Appropriation (POA)
 - ⊕ Injection Well
 - Donation Land Claim (DLC)
 - All Other Features**
 - ⊕ Tax Lot
 - Railroad
 - Major Road
 - ~ Watercourse
 - Waterbody

LOCATION DESCRIPTIONS

Extraction Wells

EW-1: Located 1393 feet North and 1685 feet East from the SW corner of Section 5, Township 1 North, Range 2 East (W.M.)

EW-2: Located 1280 feet North and 1980 feet East from the SW corner of Section 5, Township 1 North, Range 2 East (W.M.)

EW-3: Located 1555 feet North and 1408 feet East from the SW corner of Section 5, Township 1 North, Range 2 East (W.M.)

Injection Wells

IW-1: Located 49 feet South and 4150 feet East from the NW corner of Section 8, Township 1 North, Range 2 East (W.M.)

IW-2: Located 182 feet South and 4427 feet East from the NW corner of Section 8, Township 1 North, Range 2 East (W.M.)

IW-3: Located 345 feet South and 4700 feet East from the NW corner of Section 8, Township 1 North, Range 2 East (W.M.)

IW-4: Located 492 feet South and 4983 feet East from the NW corner of Section 8, Township 1 North, Range 2 East (W.M.)

IW-5: Located 630 feet South and 5263 feet East from the NW corner of Section 8, Township 1 North, Range 2 East (W.M.)

IW-6: Located 783 feet South and 5538 feet East from the NW corner of Section 8, Township 1 North, Range 2 East (W.M.)

IW-7: Located 940 feet South and 5817 feet East from the NW corner of Section 8, Township 1 North, Range 2 East (W.M.)

IW-8: Located 1080 feet South and 6080 feet East from the NW corner of Section 8, Township 1 North, Range 2 East (W.M.)

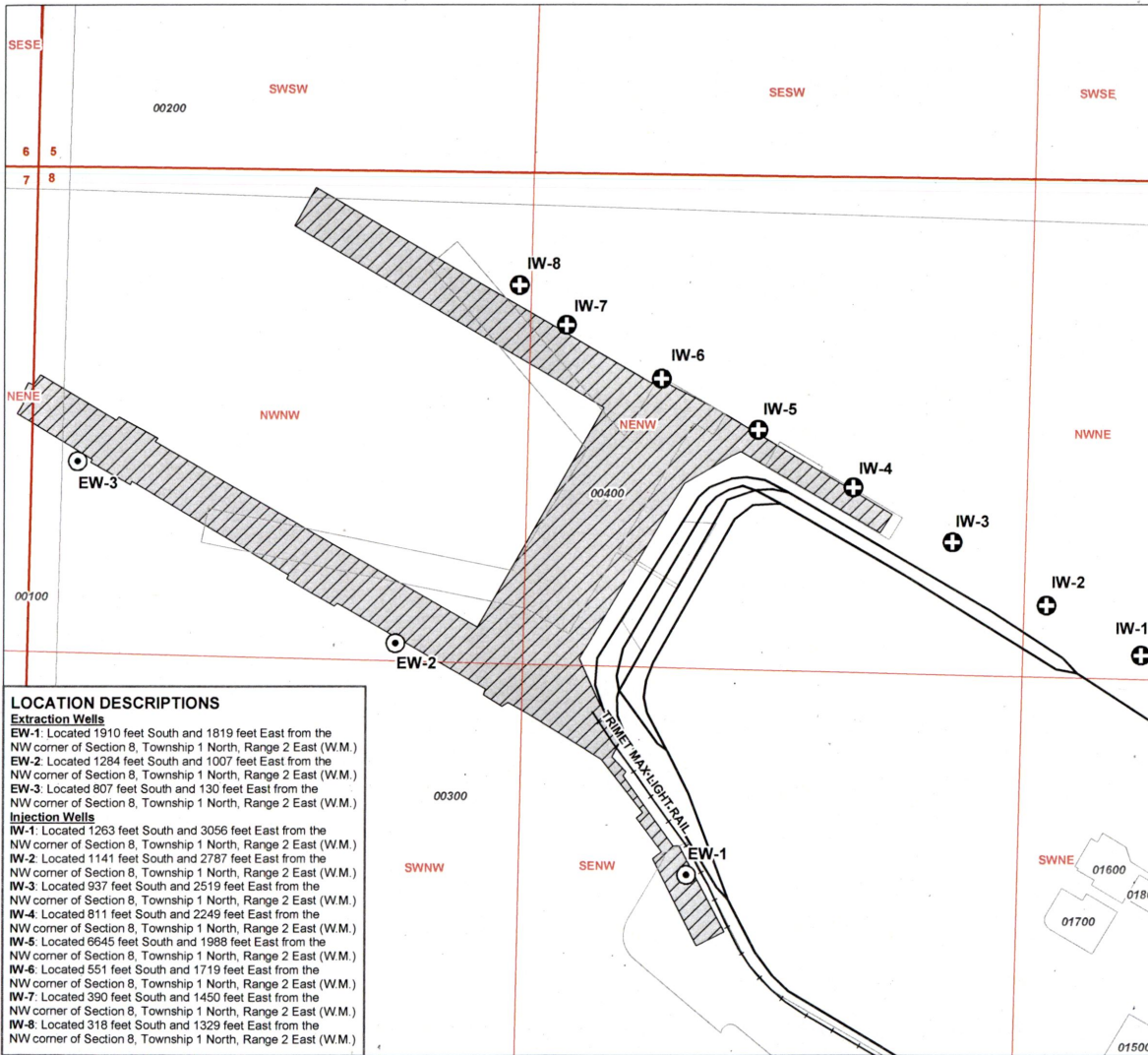
DISCLAIMER

This map was prepared for the purpose of identifying the location of a water right only and it is not intended to provide legal dimensions or location of property ownership lines.

Date: February 15, 2019
 Data Sources: METRO, OGC, OWRD, USGS, ESRI

GS
 Water Solutions, Inc.

A-18798



Application for a Groundwater Permit in the Name of Port of Portland for Portland International Airport

Proposed Points of Appropriation and Place of Use Scenario 7B - 7P

Township 1 North, Range 2 East (W.M.)

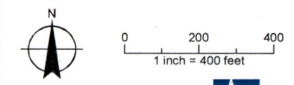
LEGEND

- ⊙ Proposed Point of Appropriation (POA)
- ⊕ Injection Well
- ▨ Proposed Place of Use (POU)
- All Other Features**
- ⊕ Tax Lot
- Railroad
- Major Road
- ~ Watercourse
- ~ Waterbody

RECEIVED
MAR 05 2019
OWRD

DISCLAIMER

This map was prepared for the purpose of identifying the location of a water right only and it is not intended to provide legal dimensions or location of property ownership lines.



Date: February 20, 2019
Data Source: METRO, OGC, OWRD, USGS, ESRI



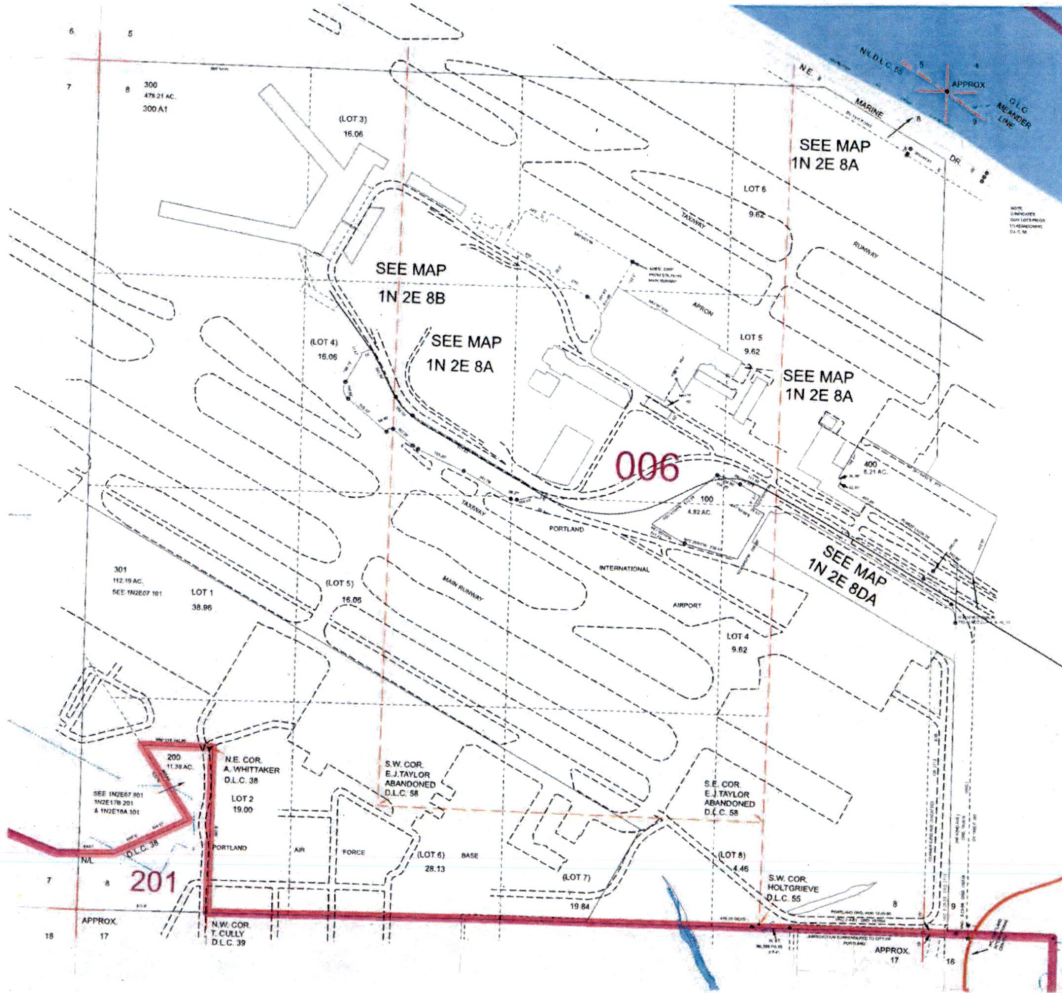
LOCATION DESCRIPTIONS
Extraction Wells
 EW-1. Located 1910 feet South and 1819 feet East from the NW corner of Section 8, Township 1 North, Range 2 East (W.M.)
 EW-2. Located 1284 feet South and 1007 feet East from the NW corner of Section 8, Township 1 North, Range 2 East (W.M.)
 EW-3. Located 807 feet South and 130 feet East from the NW corner of Section 8, Township 1 North, Range 2 East (W.M.)
Injection Wells
 IW-1. Located 1263 feet South and 3056 feet East from the NW corner of Section 8, Township 1 North, Range 2 East (W.M.)
 IW-2. Located 1141 feet South and 2787 feet East from the NW corner of Section 8, Township 1 North, Range 2 East (W.M.)
 IW-3. Located 937 feet South and 2519 feet East from the NW corner of Section 8, Township 1 North, Range 2 East (W.M.)
 IW-4. Located 811 feet South and 2249 feet East from the NW corner of Section 8, Township 1 North, Range 2 East (W.M.)
 IW-5. Located 645 feet South and 1988 feet East from the NW corner of Section 8, Township 1 North, Range 2 East (W.M.)
 IW-6. Located 551 feet South and 1719 feet East from the NW corner of Section 8, Township 1 North, Range 2 East (W.M.)
 IW-7. Located 390 feet South and 1450 feet East from the NW corner of Section 8, Township 1 North, Range 2 East (W.M.)
 IW-8. Located 318 feet South and 1329 feet East from the NW corner of Section 8, Township 1 North, Range 2 East (W.M.)

A-18798

THIS MAP WAS PREPARED FOR ASSESSMENT PURPOSE ONLY

SECTION 8 T.1N. R.2E. W.M.
MULTNOMAH COUNTY
1" = 400'

1N 2E 8
PORTLAND



RECEIVED
MAR 05 2019
OWRD

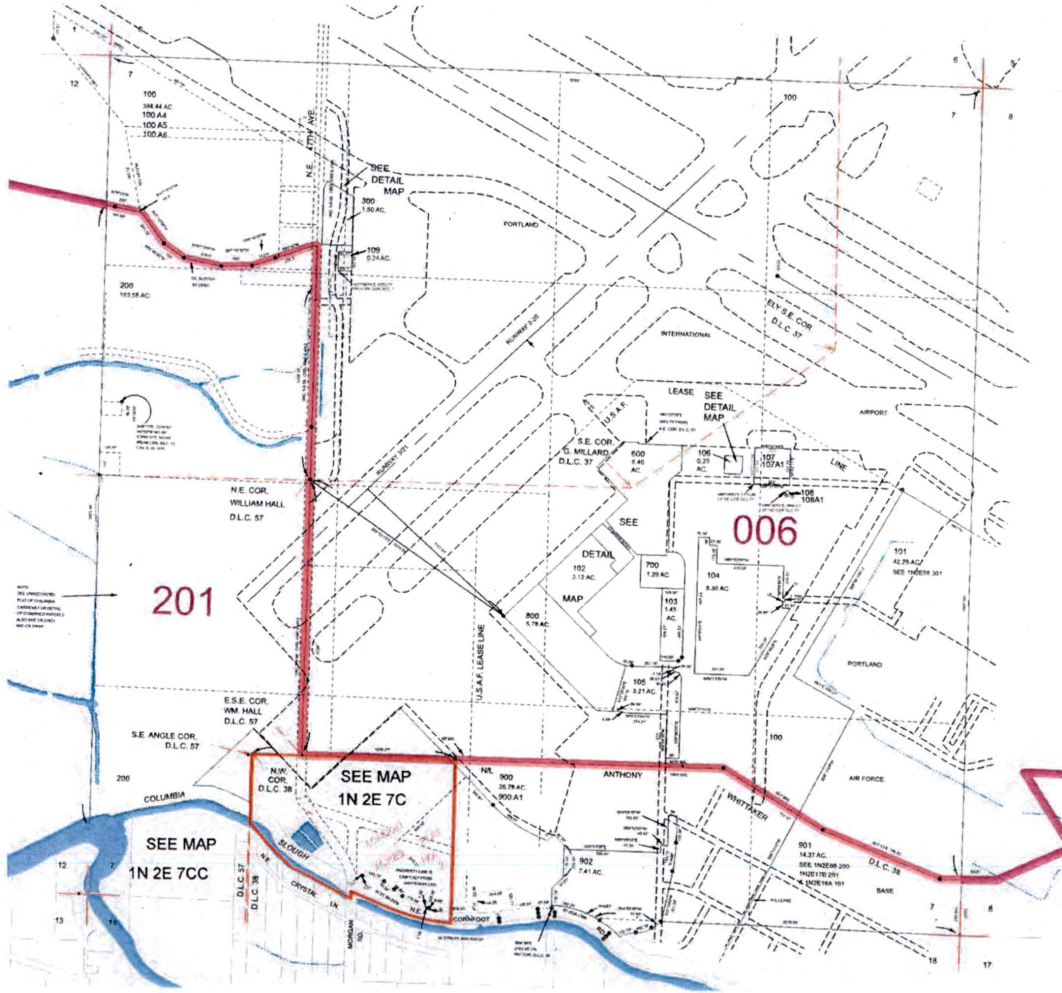
1N 2E 8
PORTLAND

G-18798

THIS MAP WAS PREPARED FOR ASSESSMENT PURPOSE ONLY

SECTION 7 T.1N. R.2E. W.M.
MULTNOMAH COUNTY
1" = 400'

1N 2E 7
PORTLAND



RECEIVED
MAR 05 2019
OWRD

1N 2E 7
PORTLAND

8/1/2017

G-18798

Application for a Groundwater Permit in the Name of Port of Portland for Portland International Airport

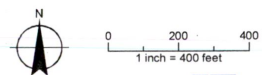
Proposed Points of Appropriation and Place of Use Scenario 7B - 7P

Township 1 North, Range 2 East (W.M.)

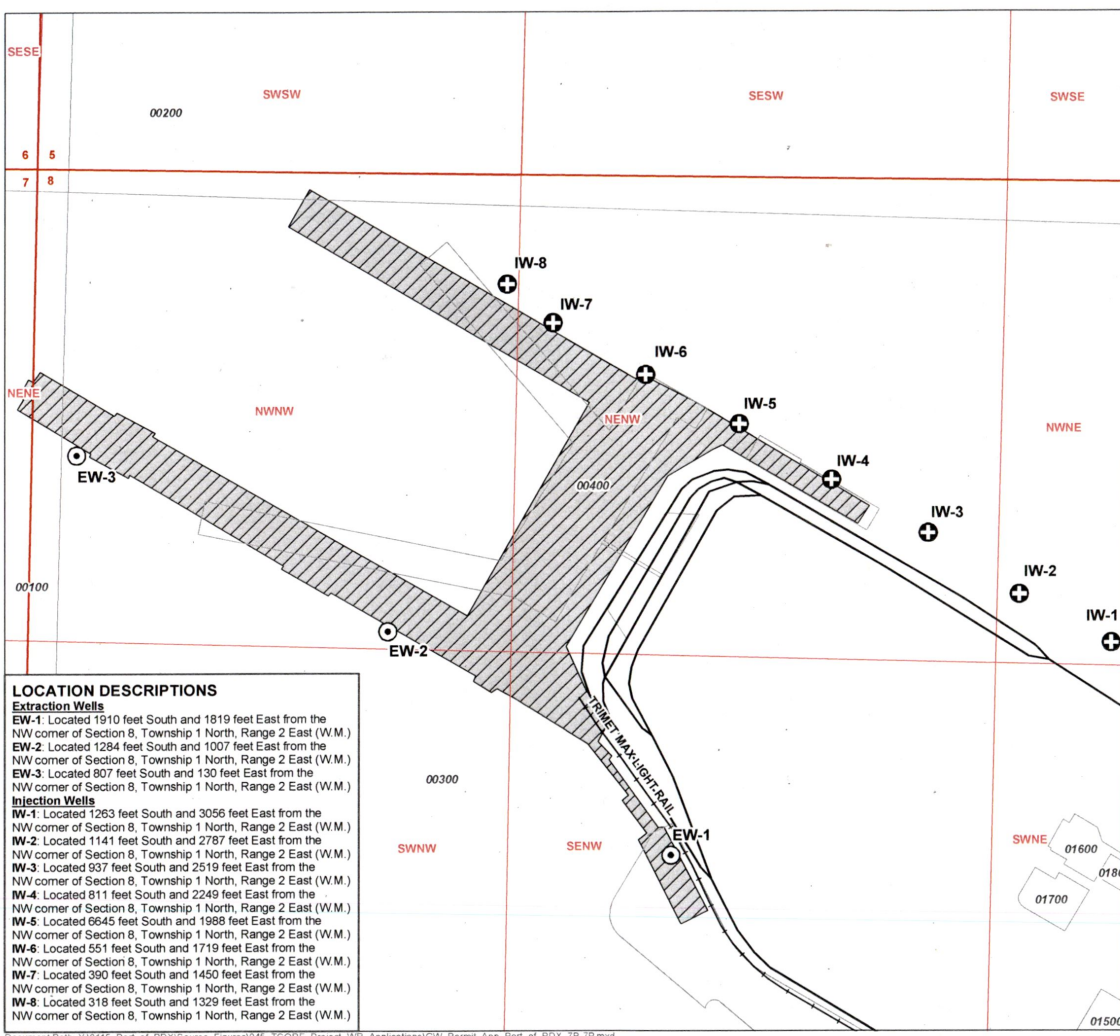
- LEGEND**
- ⊙ Proposed Point of Appropriation (POA)
 - ⊕ Injection Well
 - ▨ Proposed Place of Use (POU)
- All Other Features**
- ⊞ Tax Lot
 - Railroad
 - Major Road
 - ~ Watercourse
 - Waterbody

RECEIVED
MAR 05 2019
OWRD

DISCLAIMER
This map was prepared for the purpose of identifying the location of a water right only and it is not intended to provide legal dimensions or location of property ownership lines.



Date: February 20, 2019
Data Sources: METRO, OIGC, OWRD, USGS, ESRI
GSI
Water Solutions, Inc.



LOCATION DESCRIPTIONS

Extraction Wells

EW-1: Located 1910 feet South and 1819 feet East from the NW corner of Section 8, Township 1 North, Range 2 East (W.M.)

EW-2: Located 1284 feet South and 1007 feet East from the NW corner of Section 8, Township 1 North, Range 2 East (W.M.)

EW-3: Located 807 feet South and 130 feet East from the NW corner of Section 8, Township 1 North, Range 2 East (W.M.)

Injection Wells

IW-1: Located 1263 feet South and 3056 feet East from the NW corner of Section 8, Township 1 North, Range 2 East (W.M.)

IW-2: Located 1141 feet South and 2787 feet East from the NW corner of Section 8, Township 1 North, Range 2 East (W.M.)

IW-3: Located 937 feet South and 2519 feet East from the NW corner of Section 8, Township 1 North, Range 2 East (W.M.)

IW-4: Located 811 feet South and 2249 feet East from the NW corner of Section 8, Township 1 North, Range 2 East (W.M.)

IW-5: Located 6645 feet South and 1988 feet East from the NW corner of Section 8, Township 1 North, Range 2 East (W.M.)

IW-6: Located 551 feet South and 1719 feet East from the NW corner of Section 8, Township 1 North, Range 2 East (W.M.)

IW-7: Located 390 feet South and 1450 feet East from the NW corner of Section 8, Township 1 North, Range 2 East (W.M.)

IW-8: Located 318 feet South and 1329 feet East from the NW corner of Section 8, Township 1 North, Range 2 East (W.M.)

Document Path: Y:\0115_Port_of_PDX\Source_Figures\045_CORE_Project_WR_Applications\GW_Permit_App_Port_of_PDX_7B-7P.mxd

G-18798

110 000 FEET
(WASH.)
5051000m.N.

T. 2 N.
T. 1 N.

5050

LONGVIEW 44 MI.
2.8 MI. TO OREG. 99E.

5048

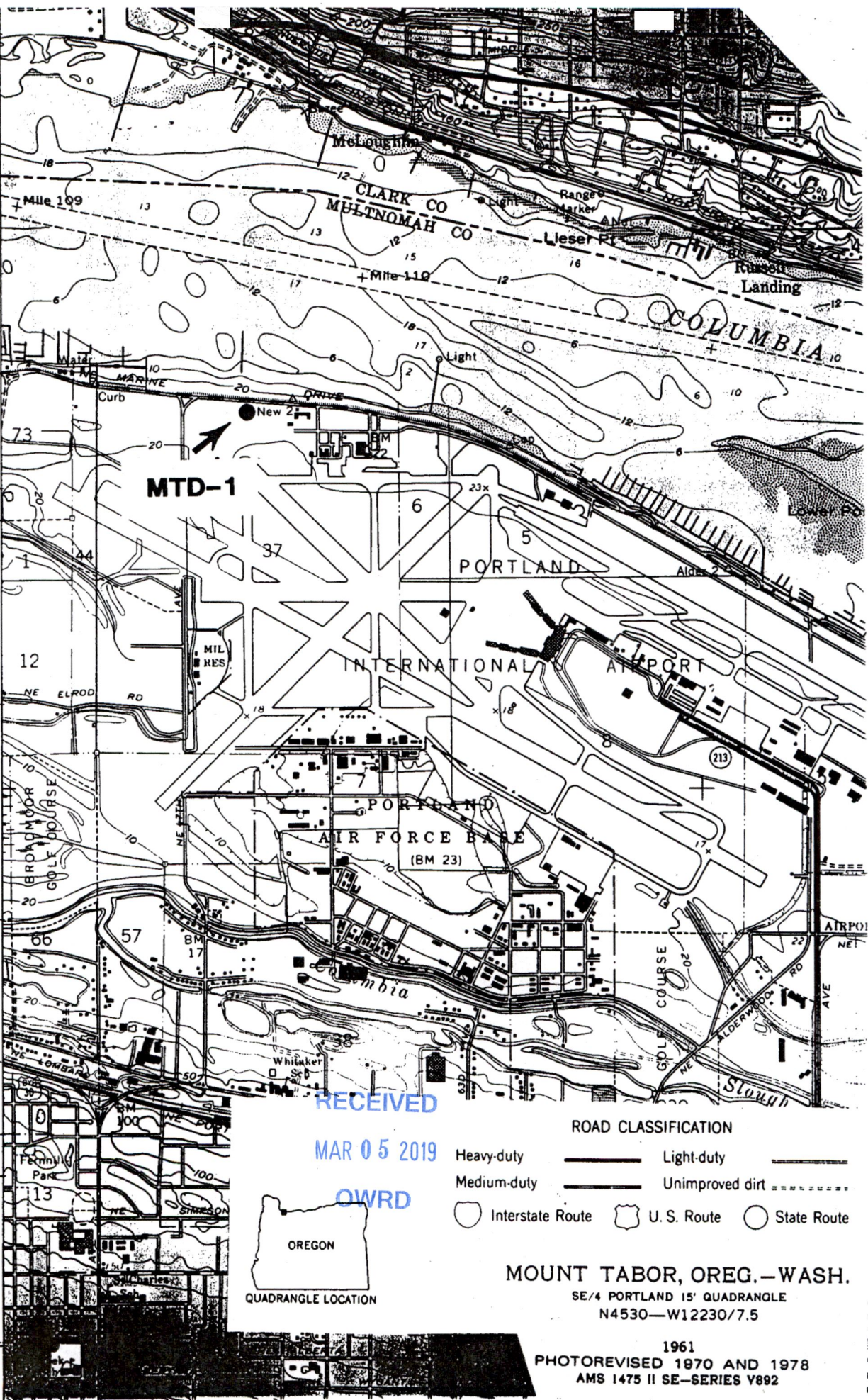
35'

1.8 MI. TO OREG. 99E.

5046

1475 II SW
(PORTLAND)

5045



MTD-1

PORTLAND

INTERNATIONAL AIRPORT

PORTLAND AIR FORCE BASE
(BM 23)



ROAD CLASSIFICATION

- Heavy-duty —————
- Medium-duty —————
- Light-duty —————
- Unimproved dirt - - - - -
- Interstate Route (thick line with 'I')
- U.S. Route (line with 'U.S.')
- State Route (line with 'S')

MOUNT TABOR, OREG.—WASH.
SE/4 PORTLAND 15' QUADRANGLE
N4530—W12230/7.5

1961
PHOTOREVISED 1970 AND 1978
AMS 1475 II SE—SERIES V892

RECEIVED

OCT 05 1998

WATER RESOURCES DEPT.
SALEM, OREGON

1 INCH = 2000 FEET



RECEIVED

MAR 05 2019

OWRD

A-18798