

RECEIVED

OCT 31 2017

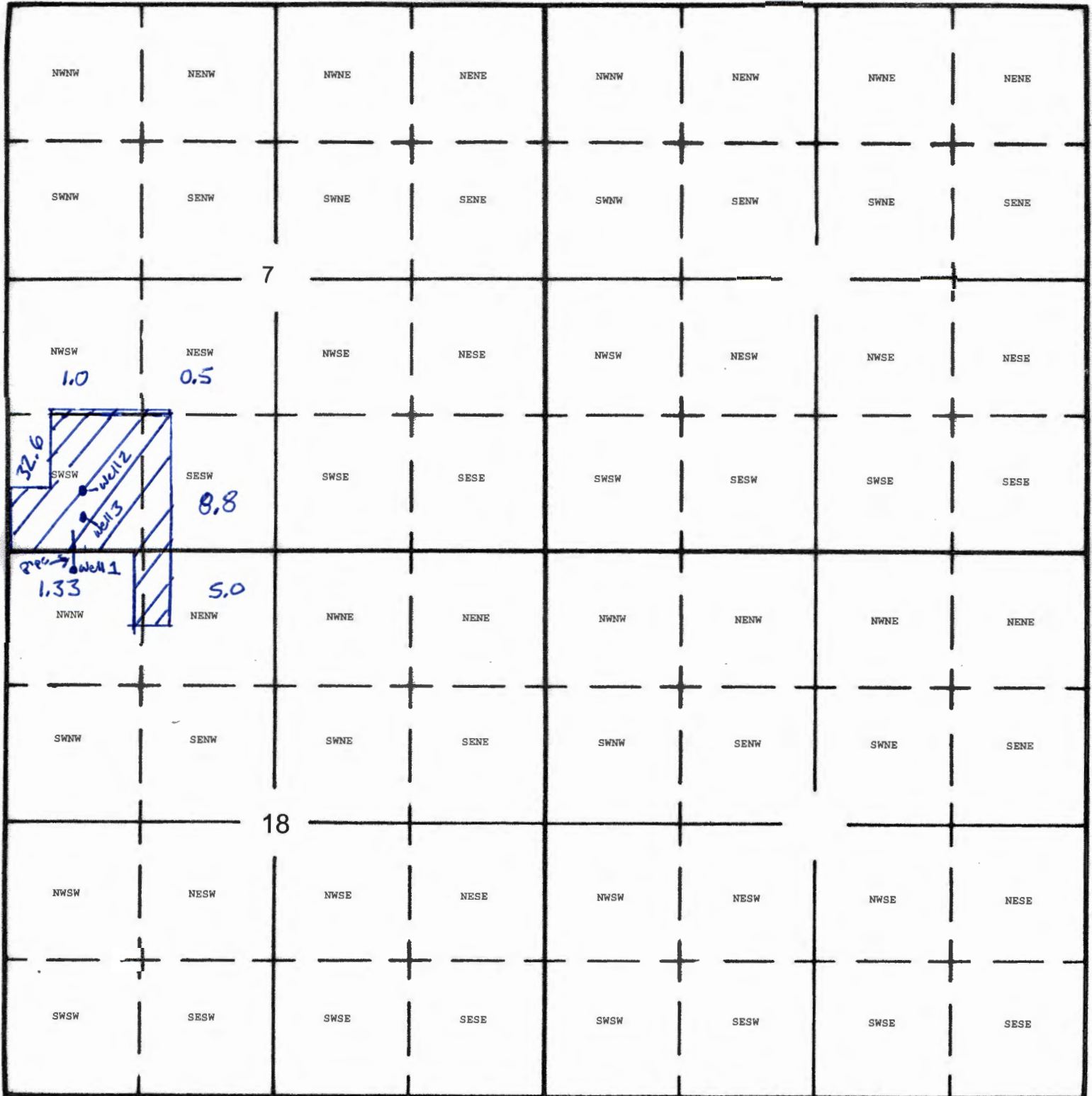


Sol-Sisters Inc.

1" = 1320'

Tax Lot:

Township 8 South, Range 4 West, Section 7, Tax Lot 202 & 502 & Section 18, Tax Lot 202 & 204



Well 1 (L-65554): 300 South and 937 East West from NW Corner Section 18, Latitude 44.88223 Longitude -123.23190  
 Well 2 (POLK 3227): 835 North and 1080 East from SW Corner Section 7, Latitude 44.88524 Longitude -123.23072  
 Well 3 (POLK 375): 540 North and 1080 East from SW Corner Section 7, Latitude 44.88446 Longitude -123.23100  
 Nursery Use on 49.23 Acres

*Deanna L. Hart 10-27-17*  
*Wendy S. 10/27/17*

IMPORTANT  
This Map for Assessment  
and Taxation Purposes  
ONLY

SEC. 7 T8S R4W WM  
POLK COUNTY

Scale 1" = 400'

See Map 8.4.6

8.4.7

S.W. CORNER  
ALWOOD WOOD  
DLC NO. 38  
N.W. CORNER  
ELEY C. DICER  
DLC NO. 55

Canceled No.

100  
101  
200

13-11

13-4

502  
20.00 AC

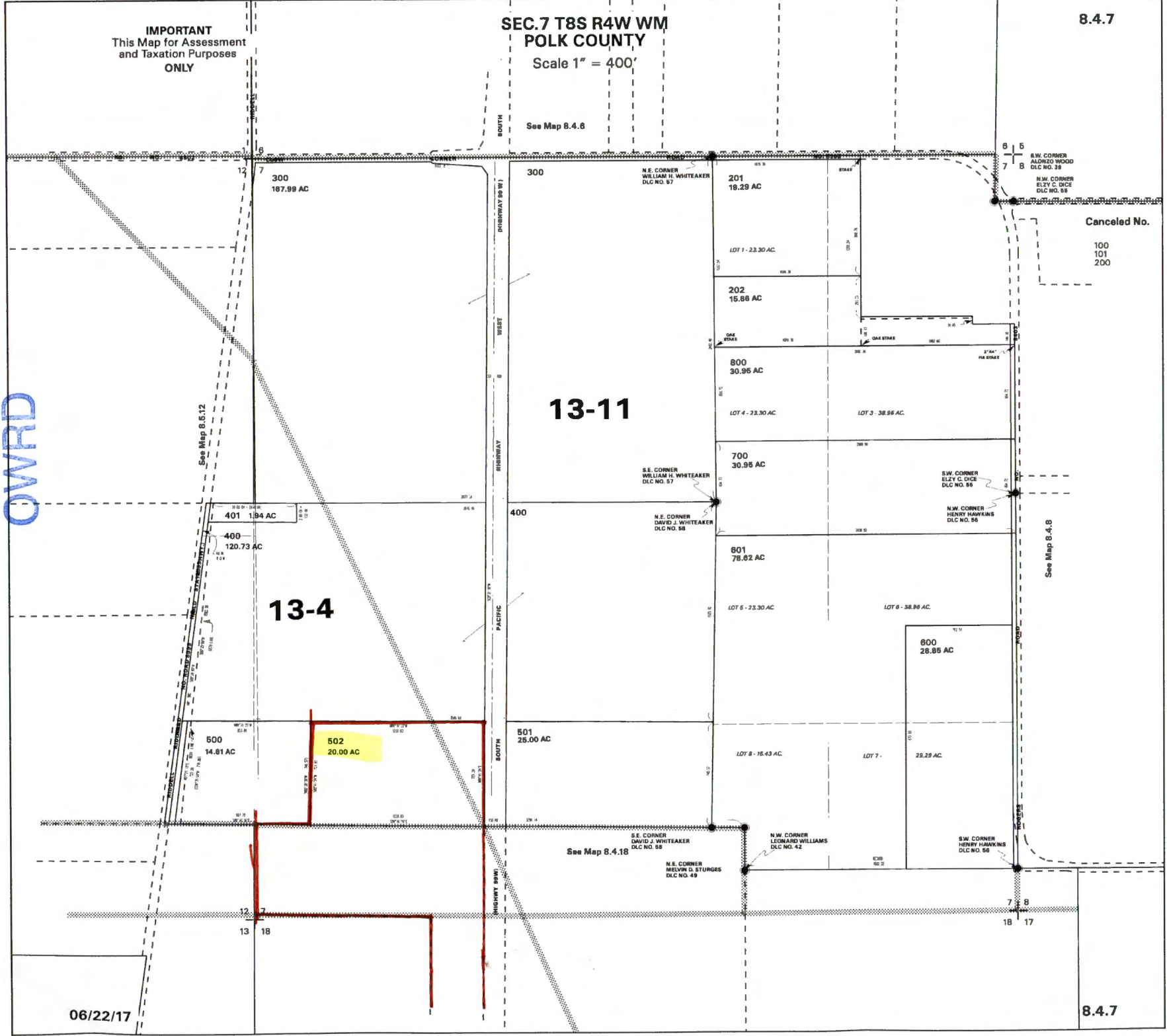
See Map 8.4.18

See Map 8.4.8

06/22/17

8.4.7

RECEIVED  
OCT 31 2017  
OWRD



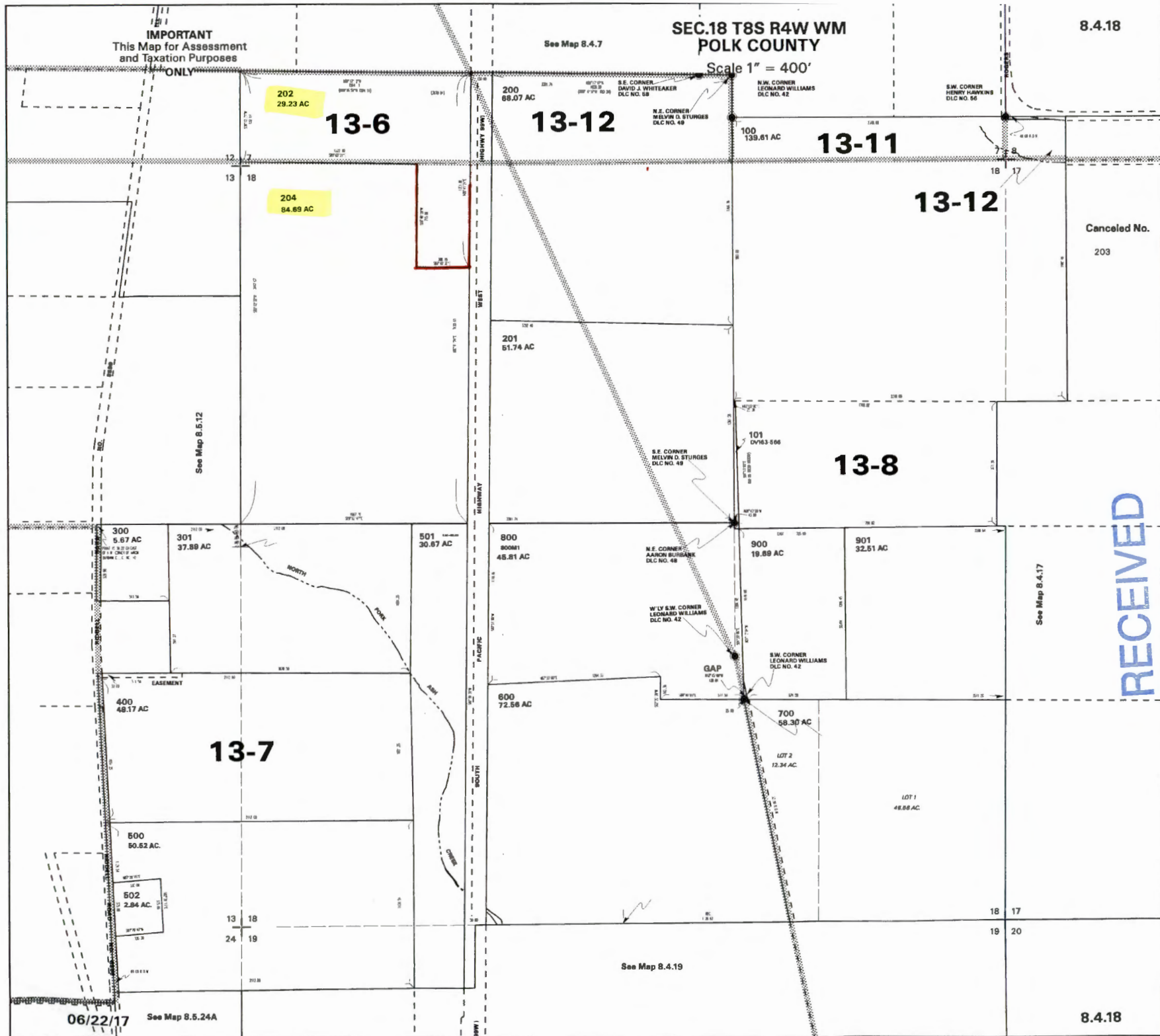
IMPORTANT  
This Map for Assessment  
and Taxation Purposes

See Map 8.4.7

SEC.18 T8S R4W WM  
POLK COUNTY

8.4.18

Scale 1" = 400'



Canceled No.  
203

RECEIVED

OCT 31 2017

OWRD

06/22/17

See Map 8.5.24A

See Map 8.4.19

8.4.18

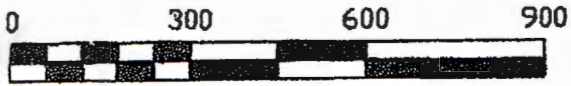
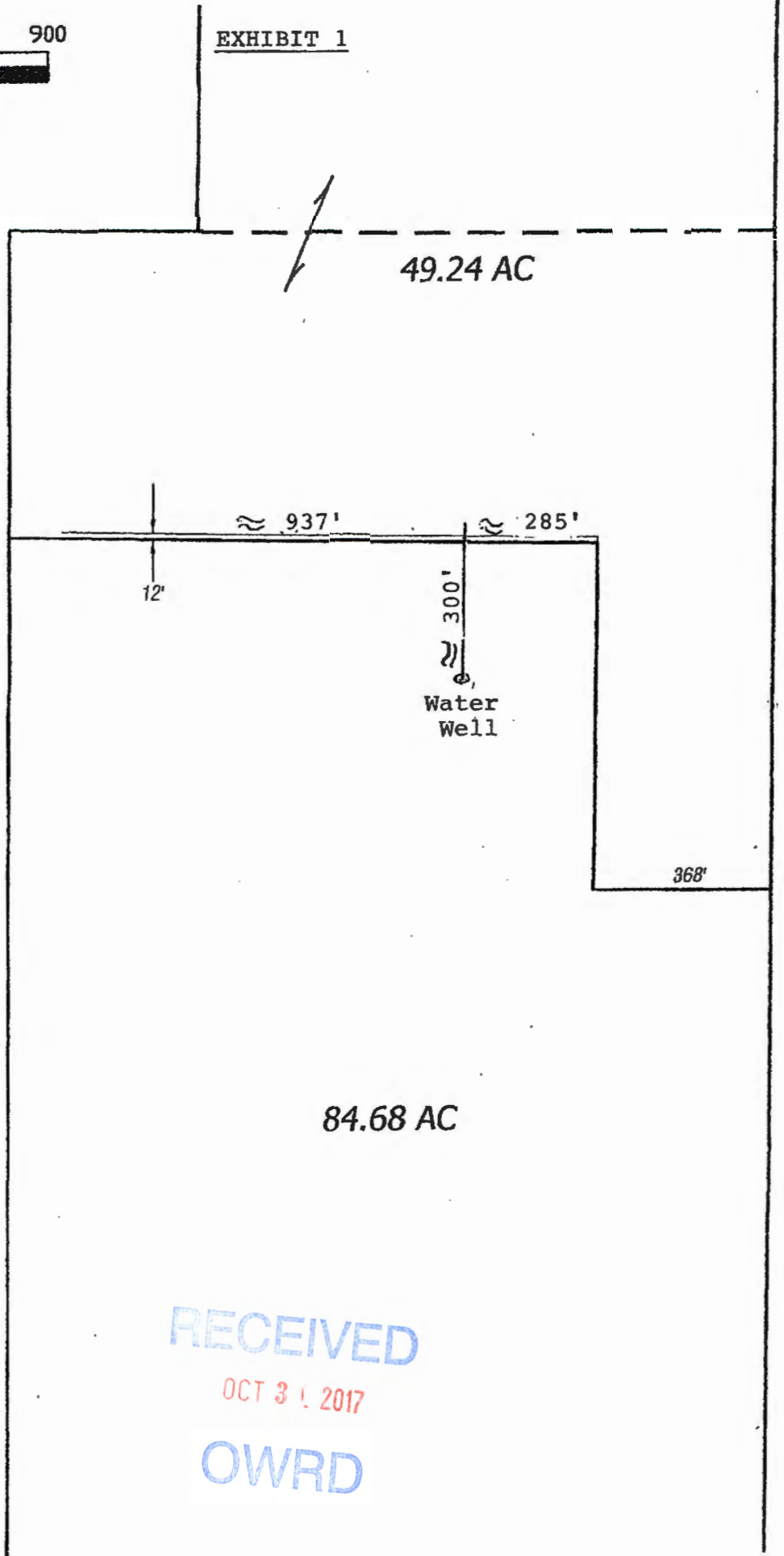


EXHIBIT 1



49.24 AC

≈ 937'

≈ 285'

12'

300'

Water Well

368'

84.68 AC

RECEIVED

OCT 31 2017

OWRD