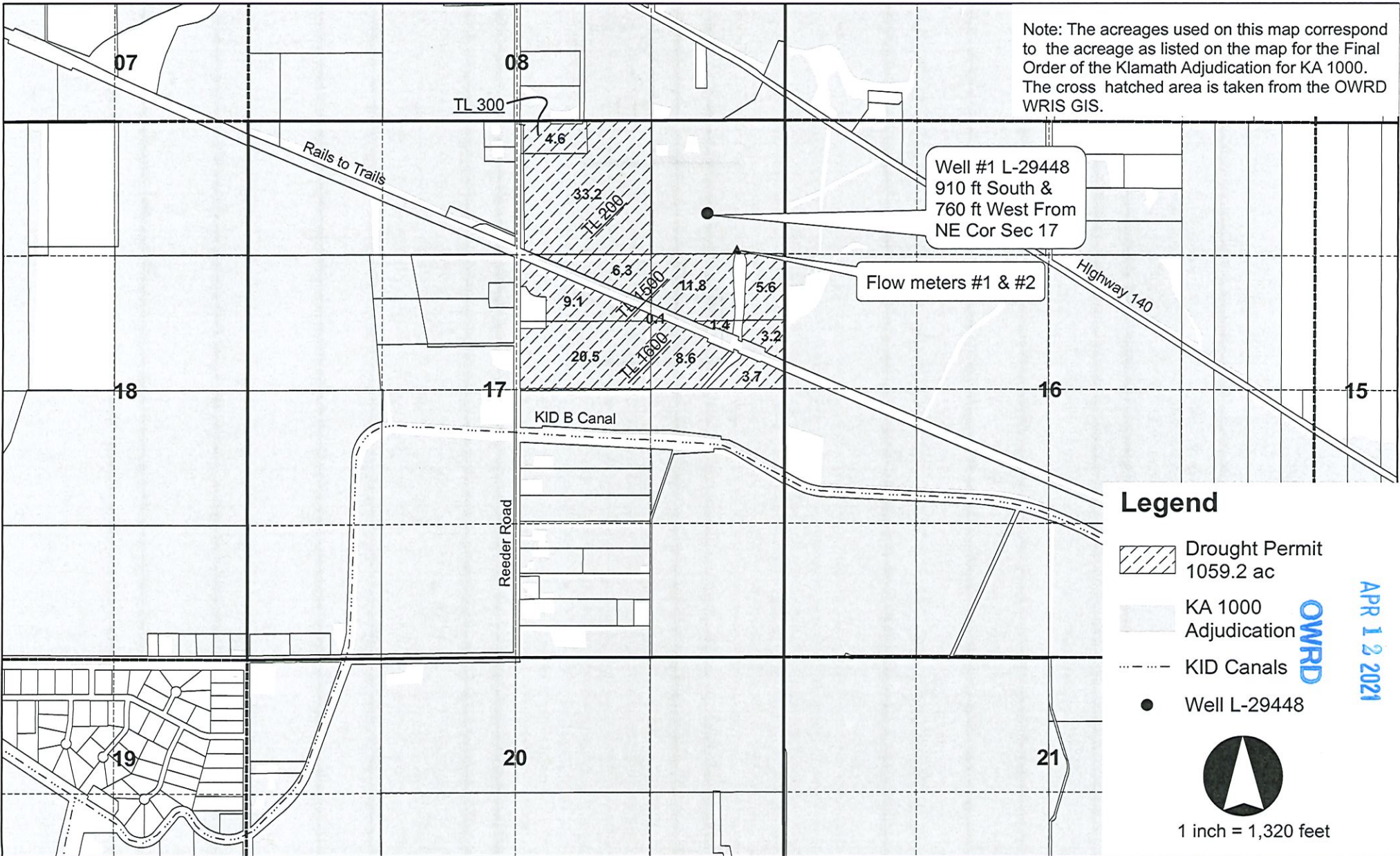


Emergency Drought Permit Application Map Twelve KS Land, LLC

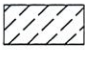



T 39 S, R 10 E,
Section 17

Map 1 of 3

Note: The acreages used on this map correspond to the acreage as listed on the map for the Final Order of the Klamath Adjudication for KA 1000. The cross hatched area is taken from the OWRD WRIS GIS.



Legend

-  Drought Permit
1059.2 ac
-  KA 1000
Adjudication
-  KID Canals
-  Well L-29448



1 inch = 1,320 feet

APR 12 2021

RECEIVED

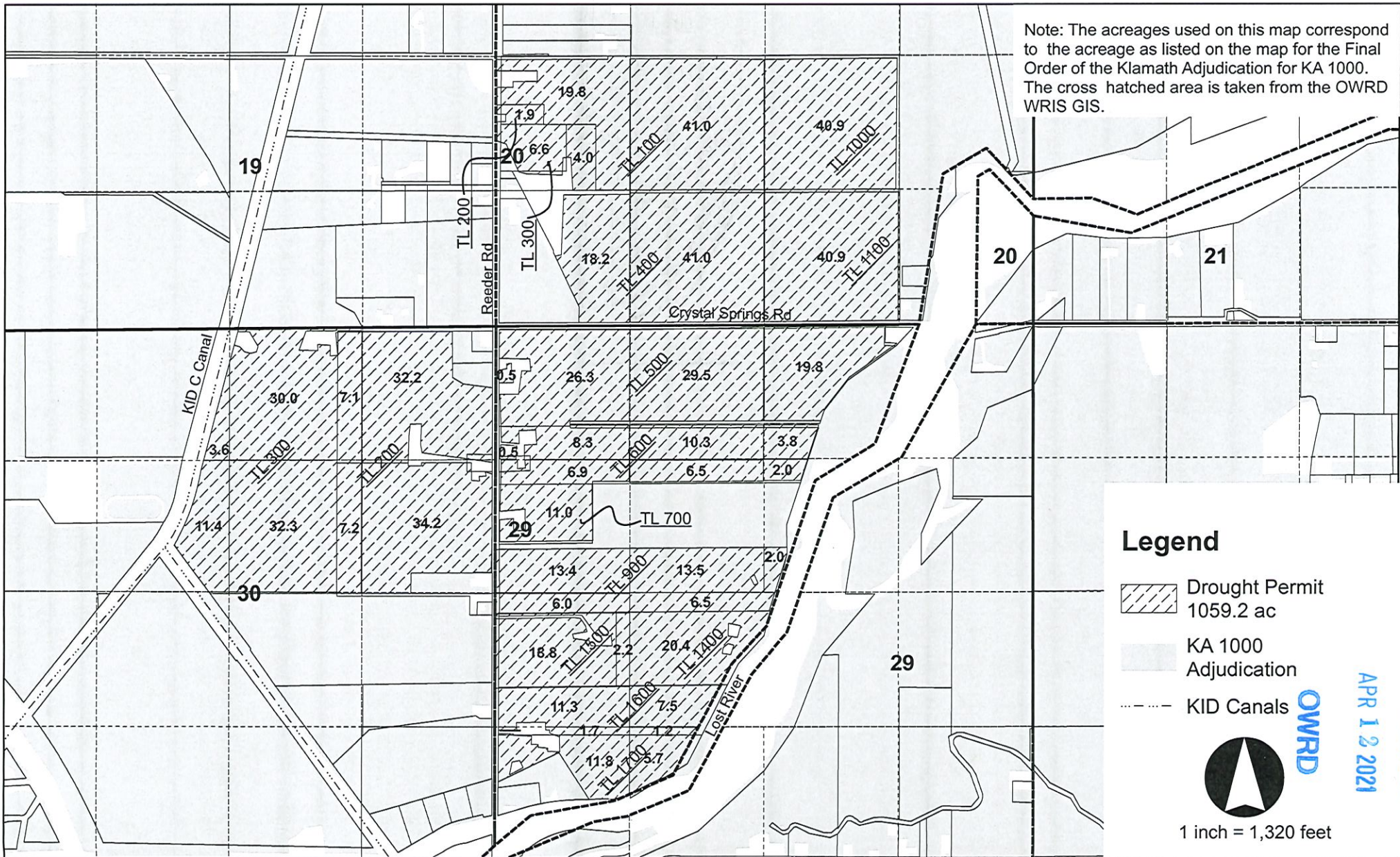
OWRD

Emergency Drought Permit Application Map Twelve KS Land, LLC


T 39 S, R 10 E,
Section 20, 29 & 30

Map 2 of 3

Note: The acreages used on this map correspond to the acreage as listed on the map for the Final Order of the Klamath Adjudication for KA 1000. The cross hatched area is taken from the OWRD WRIS GIS.



Legend

-  Drought Permit
1059.2 ac
-  KA 1000
Adjudication
-  KID Canals



1 inch = 1,320 feet

OWRD

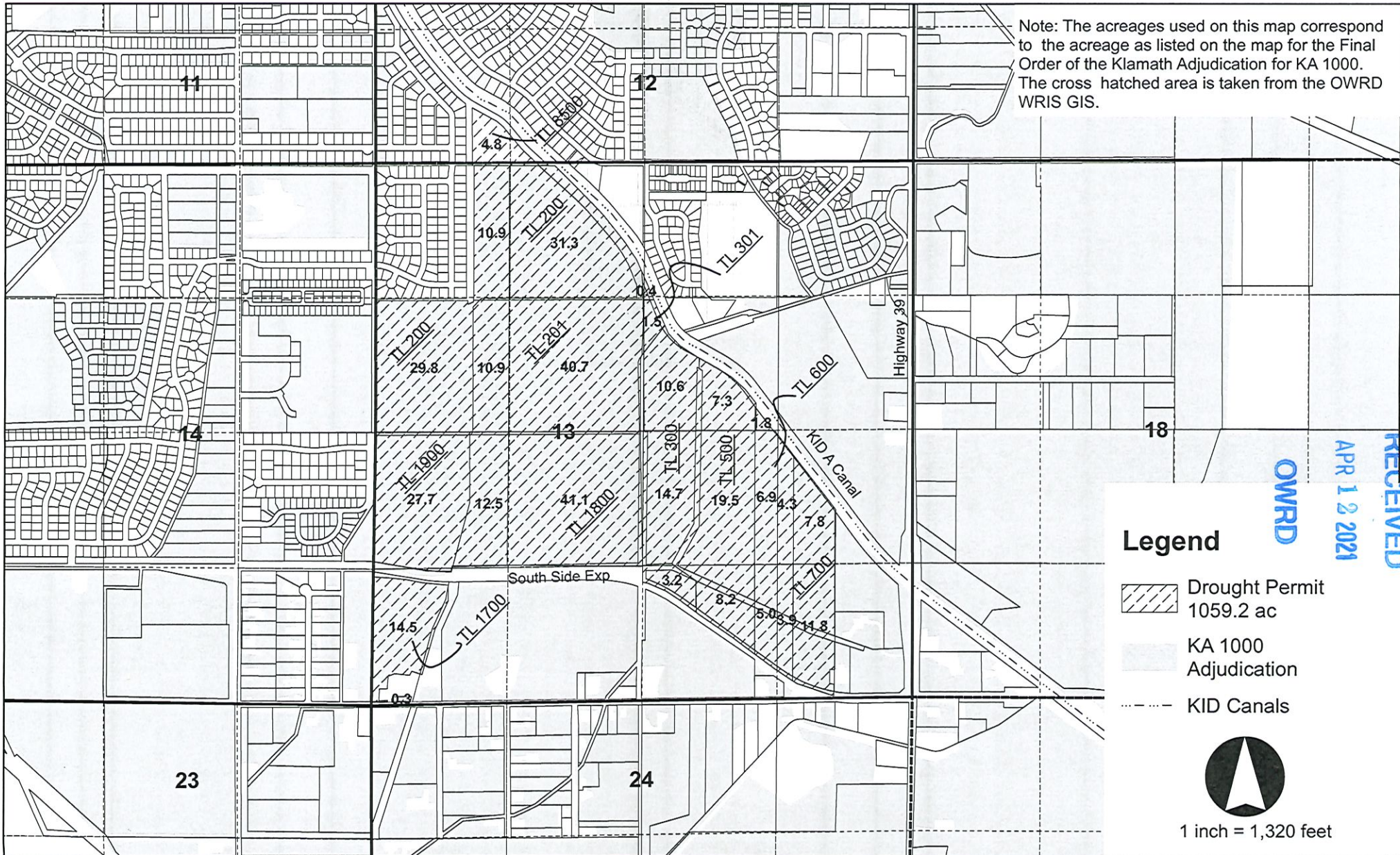
APR 12 2021

RECEIVED

Emergency Drought Permit Application Map Twelve KS Land, LLC

T 39 S, R 9 E,
Section 12 & 13

Map 3 of 3



Township	Range	Section	QQ	Tax Lot	Acres	Owner
39S	09E	12	SWSW	8500	4.8	Pinniger
39S	09E	13	NWNE	301	0.4	City of Klamath Falls
39S	09E	13	SWNE	300	10.6	Imperato
39S	09E	13	SWNE	301	1.5	City of Klamath Falls
39S	09E	13	SWNE	500	7.3	Imperato
39S	09E	13	SWNE	600	1.8	Imperato
39S	09E	13	NENW	200	31.3	Pinniger
39S	09E	13	NWNW	200	10.9	Pinniger
39S	09E	13	SWNW	200	29.8	Pinniger
39S	09E	13	SWNW	201	10.9	City of Klamath Falls
39S	09E	13	SENW	201	40.7	City of Klamath Falls
39S	09E	13	NESW	1800	41.1	City of Klamath Falls
39S	09E	13	NWSW	1900	27.7	Axel Farms
39S	09E	13	NWSW	1800	12.5	City of Klamath Falls
39S	09E	13	SWSW	1700	0.3	Hanks
39S	09E	13	SWSW	1700	14.5	Hanks
39S	09E	13	NESE	700	7.8	Imperato
39S	09E	13	NESE	600	4.3	Imperato
39S	09E	13	NWSE	500	19.5	Imperato
39S	09E	13	NWSE	600	6.9	Imperato
39S	09E	13	NWSE	300	14.7	Imperato
39S	09E	13	SWSE	500	8.2	Imperato
39S	09E	13	SWSE	600	5.0	Imperato
39S	09E	13	SWSE	300	3.2	Imperato
39S	09E	13	SESE	700	11.8	Imperato
39S	09E	13	SESE	600	3.9	Imperato
39S	10E	17	NWNE	200	33.2	Salmon
39S	10E	17	NWNE	300	4.6	Salmon
39S	10E	17	SWNE	1600	20.5	McCabe
39S	10E	17	SWNE	1500	9.1	McCabe
39S	10E	17	SWNE	1500	6.3	McCabe
39S	10E	17	SENE	1500	11.8	McCabe
39S	10E	17	SENE	1600	3.2	McCabe
39S	10E	17	SENE	1500	0.1	McCabe
39S	10E	17	SENE	1500	5.6	McCabe
39S	10E	17	SENE	1600	1.4	McCabe
39S	10E	17	SENE	1600	3.7	McCabe
39S	10E	17	SENE	1600	8.6	McCabe
39S	10E	20	NESW	100	41.0	Metler
39S	10E	20	NWSW	100	19.8	Metler
39S	10E	20	NWSW	200	1.9	Metler
39S	10E	20	NWSW	300	6.6	Blackman
39S	10E	20	NWSW	400	4.0	Blackman
39S	10E	20	SWSW	400	18.2	Blackman
39S	10E	20	SESW	400	41.0	Blackman
39S	10E	20	NWSE	1000	40.9	Metler
39S	10E	20	SWSE	1100	40.9	Blackman
39S	10E	29	NWNE	600	3.8	Hardenburger
39S	10E	29	NWNE	500	19.8	Webb
39S	10E	29	SWNE	600	2.0	Hardenburger
39S	10E	29	SWNE	900	2.0	Graetsch
39S	10E	29	NENW	600	10.3	Hardenburger
39S	10E	29	NENW	500	29.5	Webb
39S	10E	29	NWNW	500	0.5	Webb
39S	10E	29	NWNW	600	0.5	Hardenburger
39S	10E	29	NWNW	500	26.3	Webb
39S	10E	29	NWNW	600	8.3	Hardenburger
39S	10E	29	SWNW	700	11.0	Stutzer
39S	10E	29	SWNW	900	13.4	Graetsch
39S	10E	29	SWNW	600	6.9	Hardenburger

RECEIVED

APR 12 2021

OWRD

39S	10E	29	SEW	600	6.5 Hardenburger
39S	10E	29	SEW	900	13.5 Graetsch
39S	10E	29	NESW	1400	20.4 Beddoe
39S	10E	29	NESW	1600	7.5 Langford
39S	10E	29	NESW	900	6.5 Graetsch
39S	10E	29	NWSW	1500	18.8 Alaniz
39S	10E	29	NWSW	1600	11.3 Langford
39S	10E	29	NWSW	900	6.0 Graetsch
39S	10E	29	NWSW	1400	2.2 Beddoe
39S	10E	29	SWSW	1600	1.7 Langford
39S	10E	29	SWSW	1700	11.8 Langford
39S	10E	29	SESW	1600	1.2 Langford
39S	10E	29	SESW	1700	5.7 Langford
39S	10E	30	NENE	200	32.2 Darrow
39S	10E	30	NWNE	200	7.1 Darrow
39S	10E	30	NWNE	300	30.0 Culver
39S	10E	30	SWNE	200	7.2 Darrow
39S	10E	30	SWNE	300	32.3 Culver
39S	10E	30	SENE	200	34.2 Darrow
39S	10E	30	NENW	300	3.6 Culver
39S	10E	30	SEW	300	11.4 Culver
Total					1059.2

RECEIVED

APR 12 2021

OWRD