

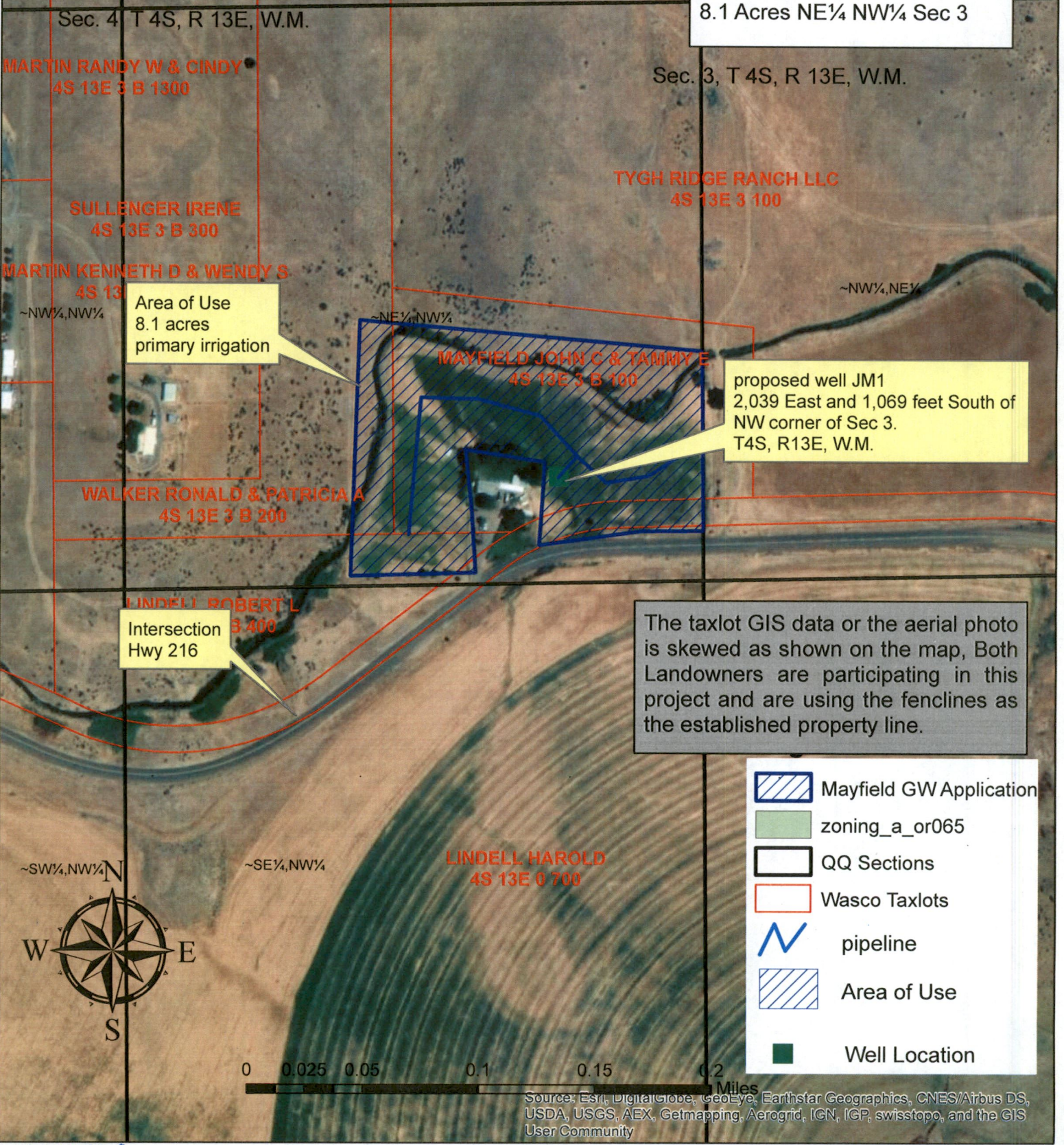
John Mayfield  
 Application for Ground Water Right  
 1 inch = 300 feet  
 Tygh Valley, Oregon

RECEIVED  
 DEC 09 2019  
 OWRD

RECEIVED  
 JUL 25 2019  
 OWRD

TYGH RIDGE RANCH LLC  
 3S 13E 0 4100  
 SW¼, SE¼

POU Summary  
 8.1 Acres NE¼ NW¼ Sec 3










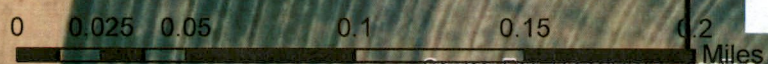
Area of Use  
 8.1 acres  
 primary irrigation

proposed well JM1  
 2,039 East and 1,069 feet South of  
 NW corner of Sec 3.  
 T4S, R13E, W.M.

Intersection  
 Hwy 216

The taxlot GIS data or the aerial photo is skewed as shown on the map, Both Landowners are participating in this project and are using the fences as the established property line.

-  Mayfield GW Application
-  zoning\_a\_or065
-  QQ Sections
-  Wasco Taxlots
-  pipeline
-  Area of Use
-  Well Location



Source: Esri, DigitalGlobe, GeoEye, Earthstar Geographics, CNES/Airbus DS, USDA, USGS, AEX, Getmapping, Aerogrid, IGN, IGP, swisstopo, and the GIS User Community