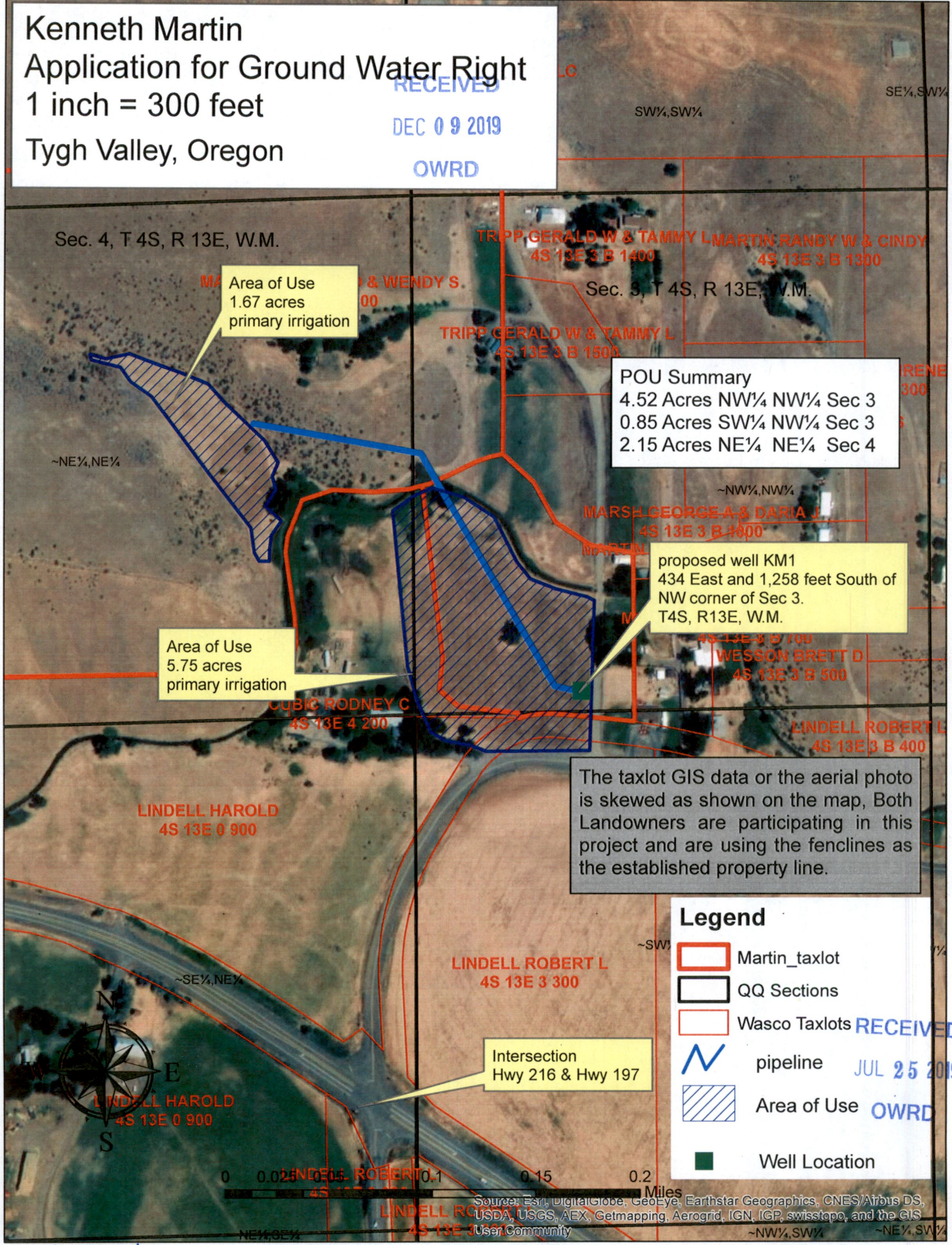


Kenneth Martin
Application for Ground Water Right
 1 inch = 300 feet
 Tygh Valley, Oregon

RECEIVED
 DEC 09 2019
 OWRD



Area of Use
 1.67 acres
 primary irrigation

Area of Use
 5.75 acres
 primary irrigation

POU Summary
 4.52 Acres NW¼ NW¼ Sec 3
 0.85 Acres SW¼ NW¼ Sec 3
 2.15 Acres NE¼ NE¼ Sec 4

proposed well KM1
 434 East and 1,258 feet South of
 NW corner of Sec 3.
 T4S, R13E, W.M.

The taxlot GIS data or the aerial photo
 is skewed as shown on the map, Both
 Landowners are participating in this
 project and are using the fences as
 the established property line.

Legend

- Martin_taxlot
- QQ Sections
- Wasco Taxlots
- N pipeline
- Area of Use
- Well Location

Source: Esri, DigitalGlobe, GeoEye, Earthstar Geographics, CNES/Airbus DS, USDA, USGS, AEX, Getmapping, Aerogrid, IGN, IGP, swisstopo, and the GIS User Community

RECEIVED
 JUL 25 2019
 OWRD