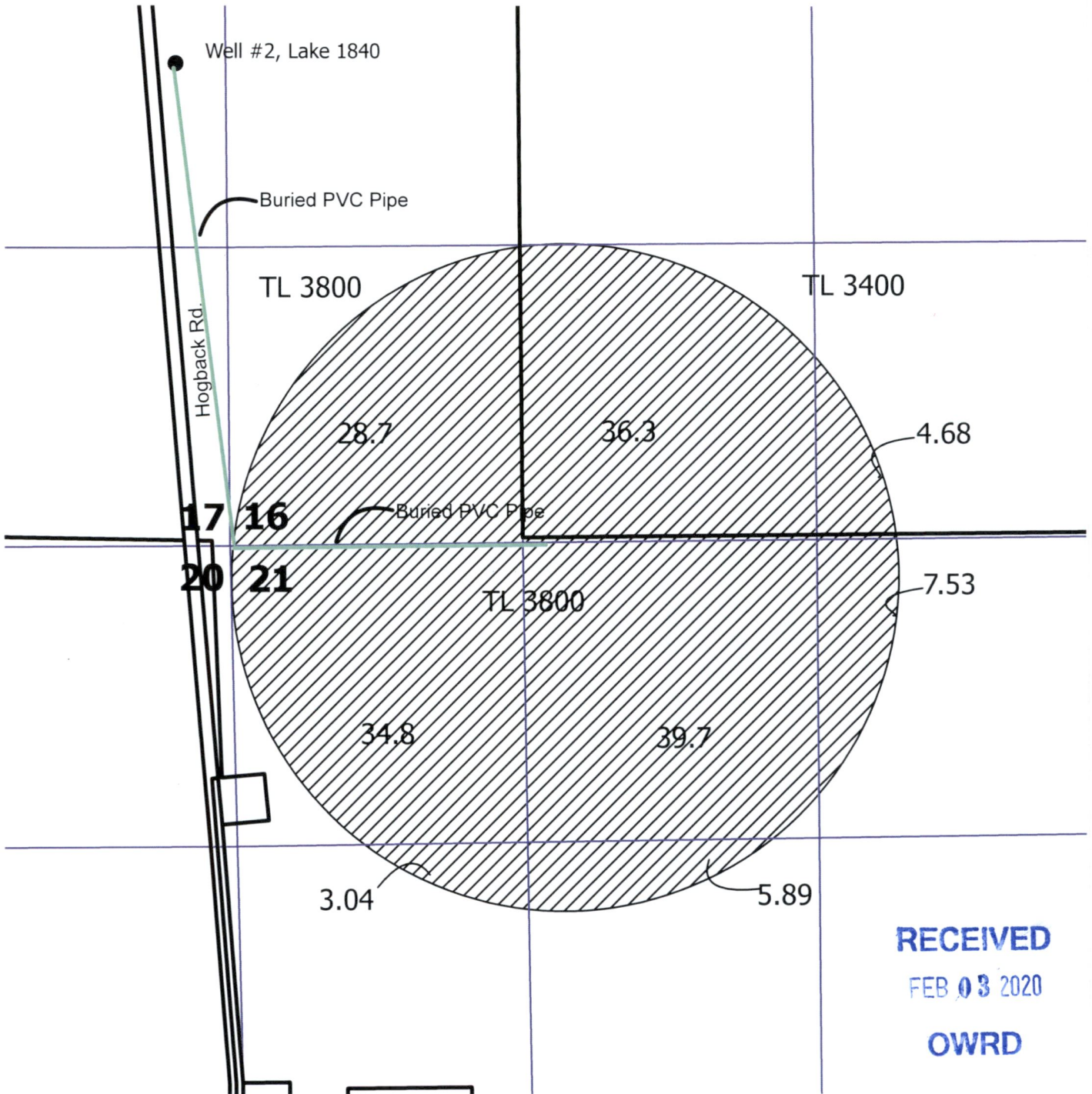
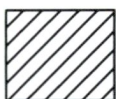


# Fitzgerald Ranch Inc.

Tax Lots 3400 & 3800  
 in Sections 16 & 21, Township 36 South, Range 24 East W.M.  
 Lake County, Oregon



**RECEIVED**  
 FEB 03 2020  
**OWRD**

 160.7 Acres of Primary Irrigation  
 From Well #2, As Shown

● Well # 2, Lake 1840, located in the NE 1/4 of the SE 1/4 Section 17 & 2145' North and 245' West from the SE corner Section 17.



1 inch = 660 feet