

POA located 400' North,
1,070' West of Center Marker
of T24S, R7E, Section 7



T24S, R7E Section 7

- Corner Marker
- Pipe
- Point of Appropriation
- Proposed Place of Use

RECEIVED

SEP 23 2020

OWRD

RECEIVED

MAY 12 2011

WATER RESOURCES DEPT
SALEM, OREGON

Scale 1" = 600'

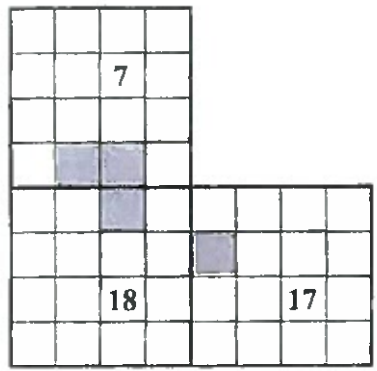
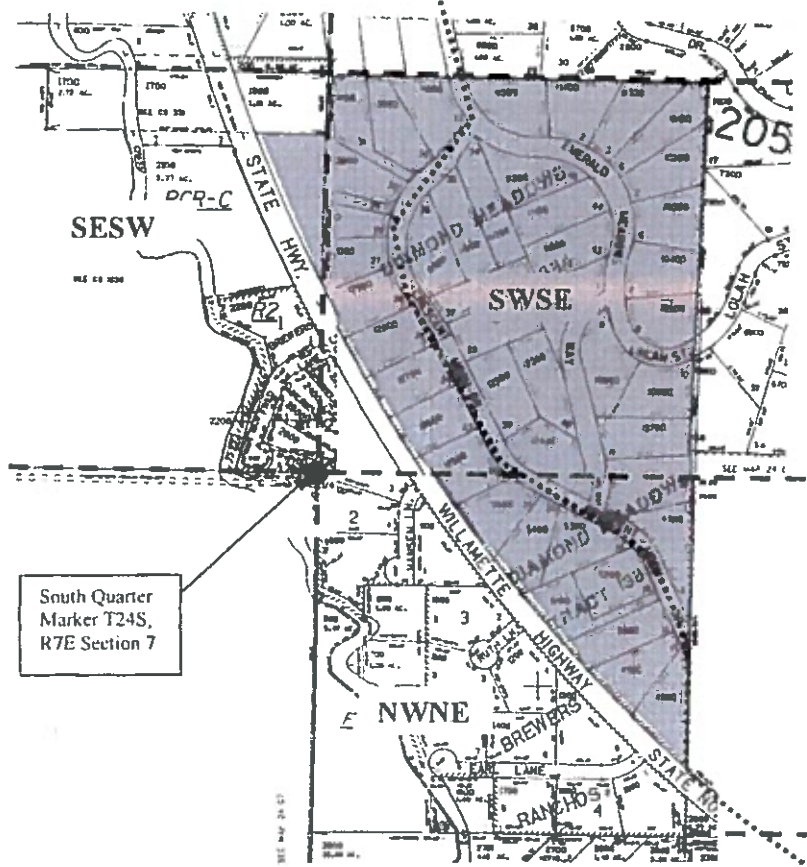
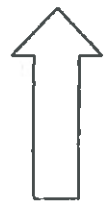
John A. Short
Water Right Services, LLC
P.O. Box 1830, Bend, OR 97709
541-408-7415 johnshort@usa.com
www.oregonwater.us

Ground Water Application Map 1 of 2 for The Diamond Meadows Tract #1384 Homeowners Association, Inc.

T24S R7E Section 7
Klamath County, OR - March 27, 2011

~~G-17465~~ 6-19030

NORTH



T24S, R7E Sections 7, 17, & 18
Scale 1" = 600'

- Corner Marker
- Pipe
- Point of Appropriation
- Proposed Place of Use

RECEIVED

MAY 12 2011

WATER RESOURCES DEPT
SALEM, OREGON

RECEIVED

SEP 23 2020

OWRD

Ground Water Application Map 2 of 2 for The Diamond Meadows Tract #1384 Homeowners Association, Inc.

John A. Short
Water Right Services, LLC
P.O. Box 1830, Bend, OR 97709
541-408-7415 johnshort@usa.com
www.oregonwater.us

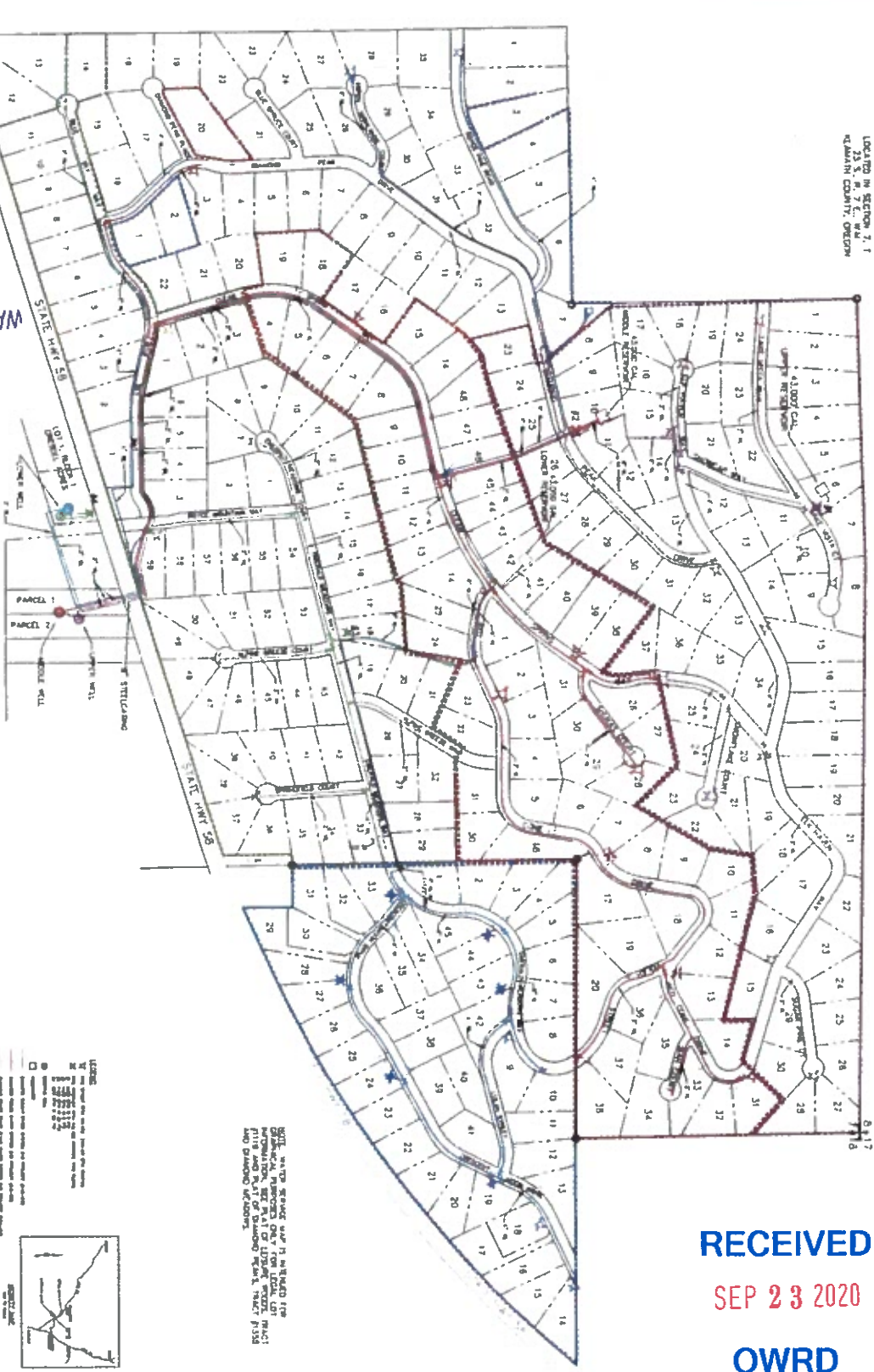
T24S R7E Sections 7, 17, & 18
Klamath County, OR - March 27, 2011

G-17465 6-19030

6-19030

WATER SERVICE MAP
DIAMOND SUMMIT, DIAMOND PEAKS,
AND DIAMOND MEADOWS
LOCALITY IN SECTION 7, T
23 S, R. 7 E, S. 10 E
CLATSOP COUNTY, OREGON

RECEIVED
MAY 1 & 2011
WATER RESOURCES DEPT
SALEM, OREGON



NOTE:
FOR FURTHER DETAILS SEE POST CONSTRUCTION DRAWINGS
AND A SITE VISIT. USE OF THIS MAP IS LIMITED TO THE
PURPOSES FOR WHICH IT WAS PREPARED. CONTACT THE
ENGINEER FOR FURTHER INFORMATION.

- LEGEND
- Water Main
 - Water Service Line
 - Sanitary Sewer Main
 - Sanitary Sewer Service Line
 - Gas Main
 - Gas Service Line
 - Electric Main
 - Electric Service Line
 - Proposed Water Main
 - Proposed Water Service Line
 - Proposed Sanitary Sewer Main
 - Proposed Sanitary Sewer Service Line
 - Proposed Gas Main
 - Proposed Gas Service Line
 - Proposed Electric Main
 - Proposed Electric Service Line

SOIL WATER SERVICE MAP IS BASED UPON
PERMITS AND RECORDS OF THE CLATSOP COUNTY
PLAT AND MAP OF DIAMOND PEAKS TRACT #1558
AND DIAMOND MEADOWS.

RECEIVED
SEP 23 2020
OWRD

AMERICAN CASH EQUITIES
1470 NE 1ST ST., STE. 100
BEND, OREGON 97701

DIAMOND SUMMIT, DIAMOND PEAKS,
DIAMOND PEAKS TRACT #1558,
AND DIAMOND MEADOWS
WATER SERVICE MAP

TYE ENGINEERING, INC.
715 NW HILL BEND, OREGON 97701 (541) 389-8899

CT17465