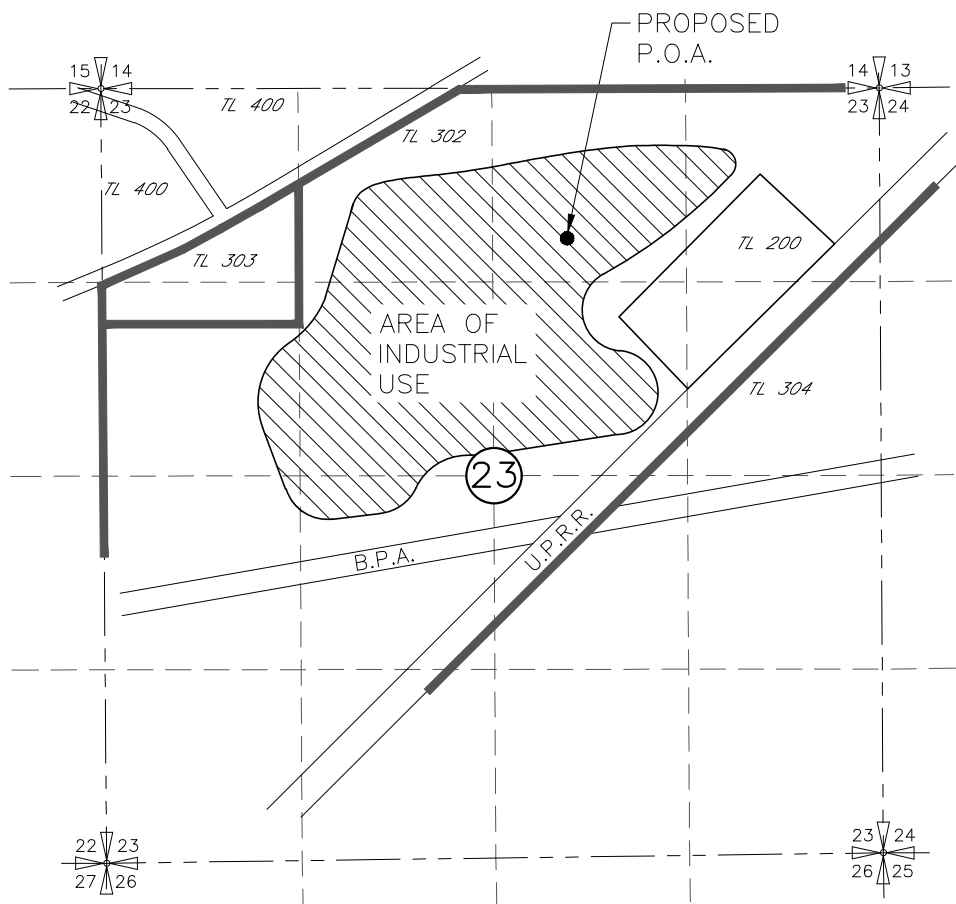


E-RECEIVED

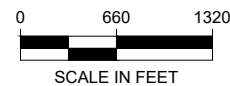
December 7, 2021

OWRD

GROUND WATER APPLICATION MAP  
UMATILLA READY MIX, INC  
C/O DUSTIN SCOTT  
T5N R29E W.M. UMATILLA COUNTY  
INDUSTRIAL USE GRAVEL PRODUCTION



PROPOSED P.O.A.  
WELL LOCATED 1035'S AND 2145'W  
FROM THE NE COR OF SEC 23



NOTE:  
THE PURPOSE OF THIS MAP IS TO IDENTIFY THE APPROXIMATE LOCATION OF THE WATER  
RIGHT. IT IS NOT INTENDED TO PROVIDE INFORMATION RELATIVE TO THE LOCATION OF  
PROPERTY OWNERSHIP BOUNDARY LINES.



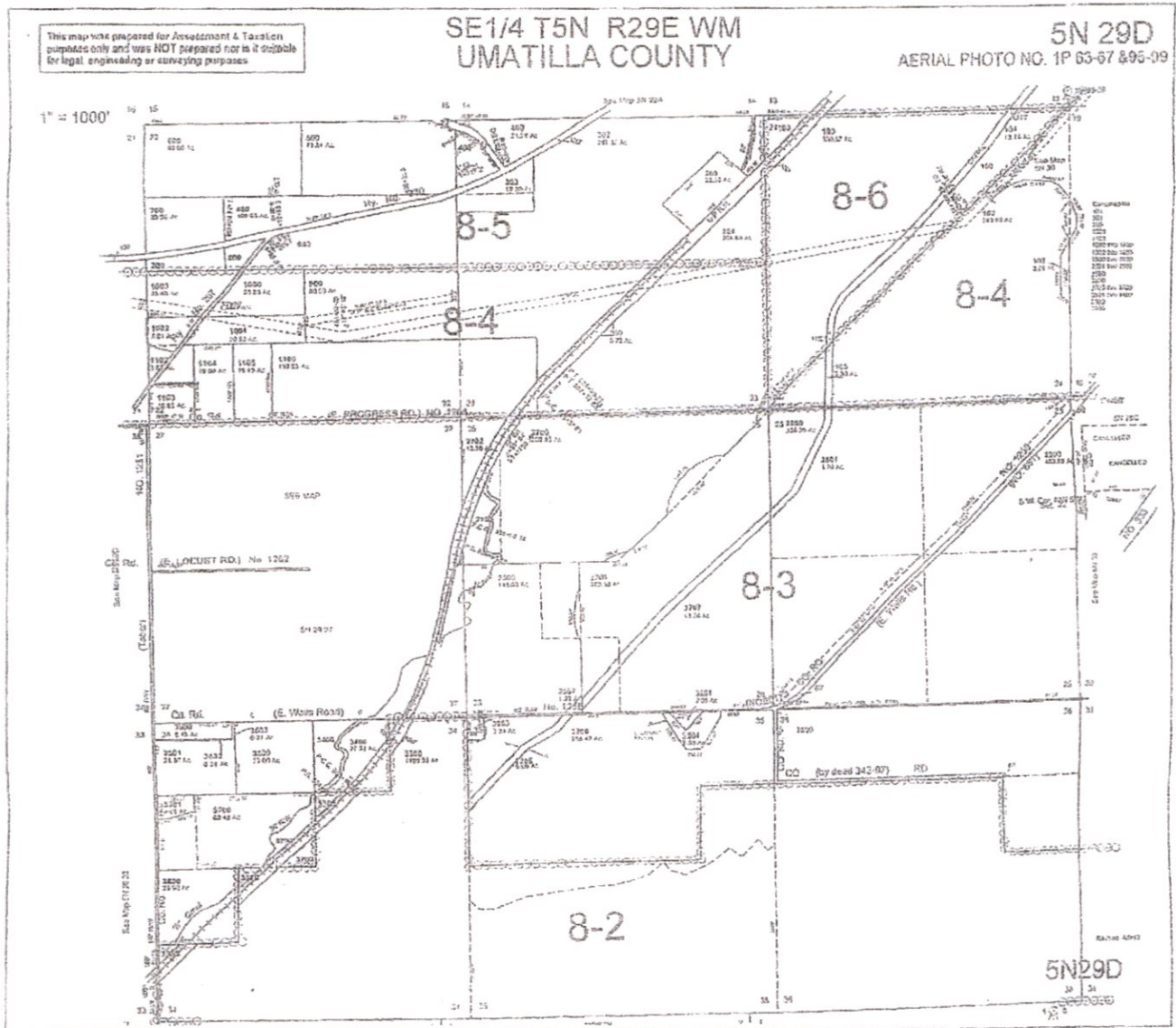
J-U-B ENGINEERS, INC.

This map was prepared for Assessment & Taxation purposes only and was NOT prepared nor is it suitable for legal, engineering or surveying purposes.

### SE 1/4 T5N R29E WM UMATILLA COUNTY

5N 29D  
AERIAL PHOTO NO. 1P 63-67 & 95-09

1" = 1000'



RECEIVED  
JUL 19 2019  
OWRD

A-18842