

T12S, R3W, Sections:

15, 16, 20, 21, 22

From The NE NE corner Sec 21

Well 1: 1269' S 558' W

Well 2: 1269' S 948' W

Well 3: 1980' S 100' W

Well 7: 1269' S 252' W

From SE Corner Lovell knighton  
D.L.C 54

Well 4: 100S 450' W

Well 5: 100S 800' W

Well 6: 100S 250' E

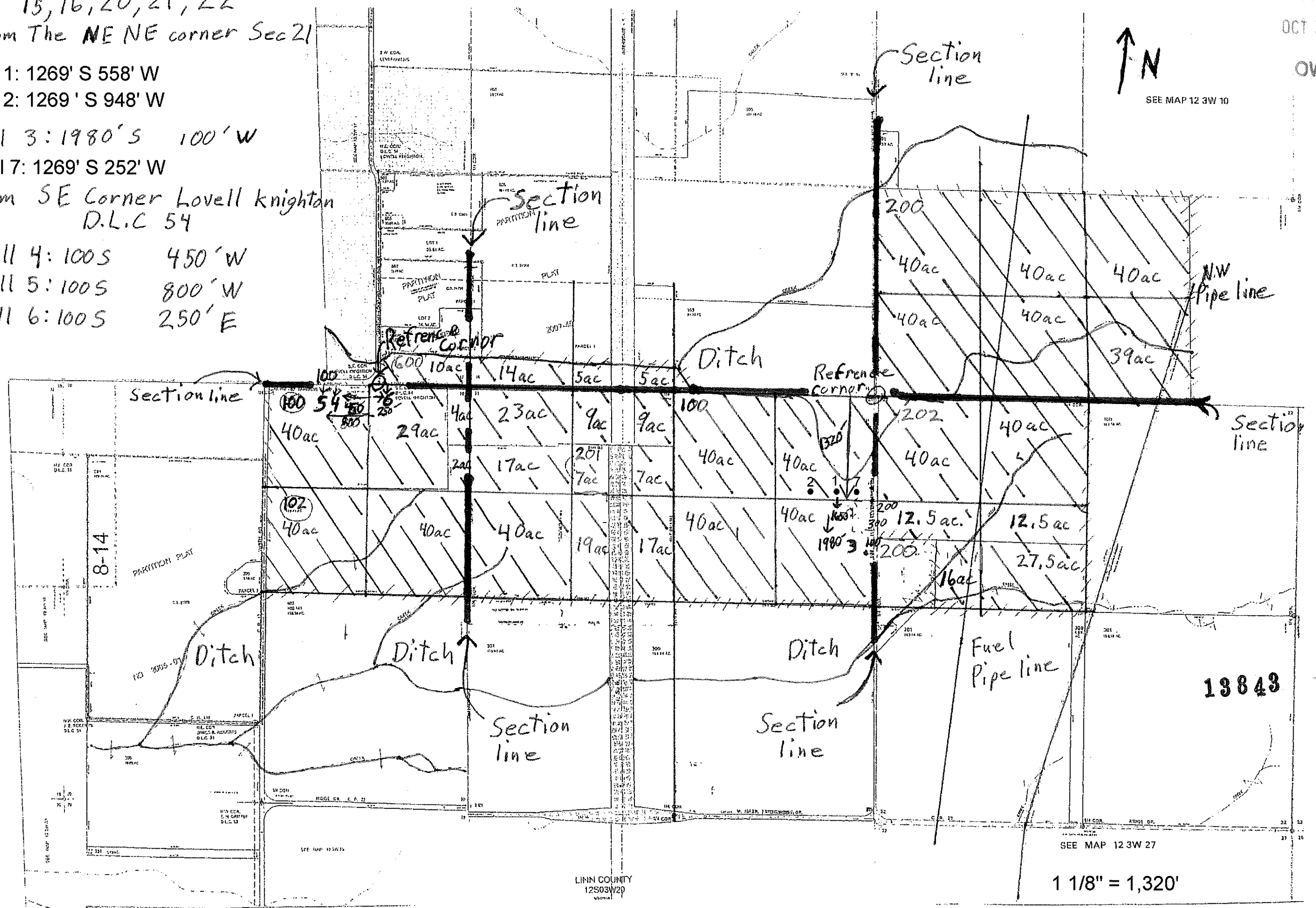
RECEIVED

OCT 13 2021

OWRD



SEE MAP 12 3W 10



LINN COUNTY  
12S03W20

SEE MAP 12 3W 27

1 1/8" = 1,320'