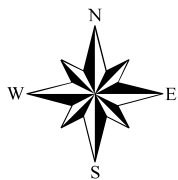


# Map to Accompany a Groundwater Application for Ben Norton Amended 4/8/2022



Scale: 1" = 400'



164.2 ac - Supp. Irr.



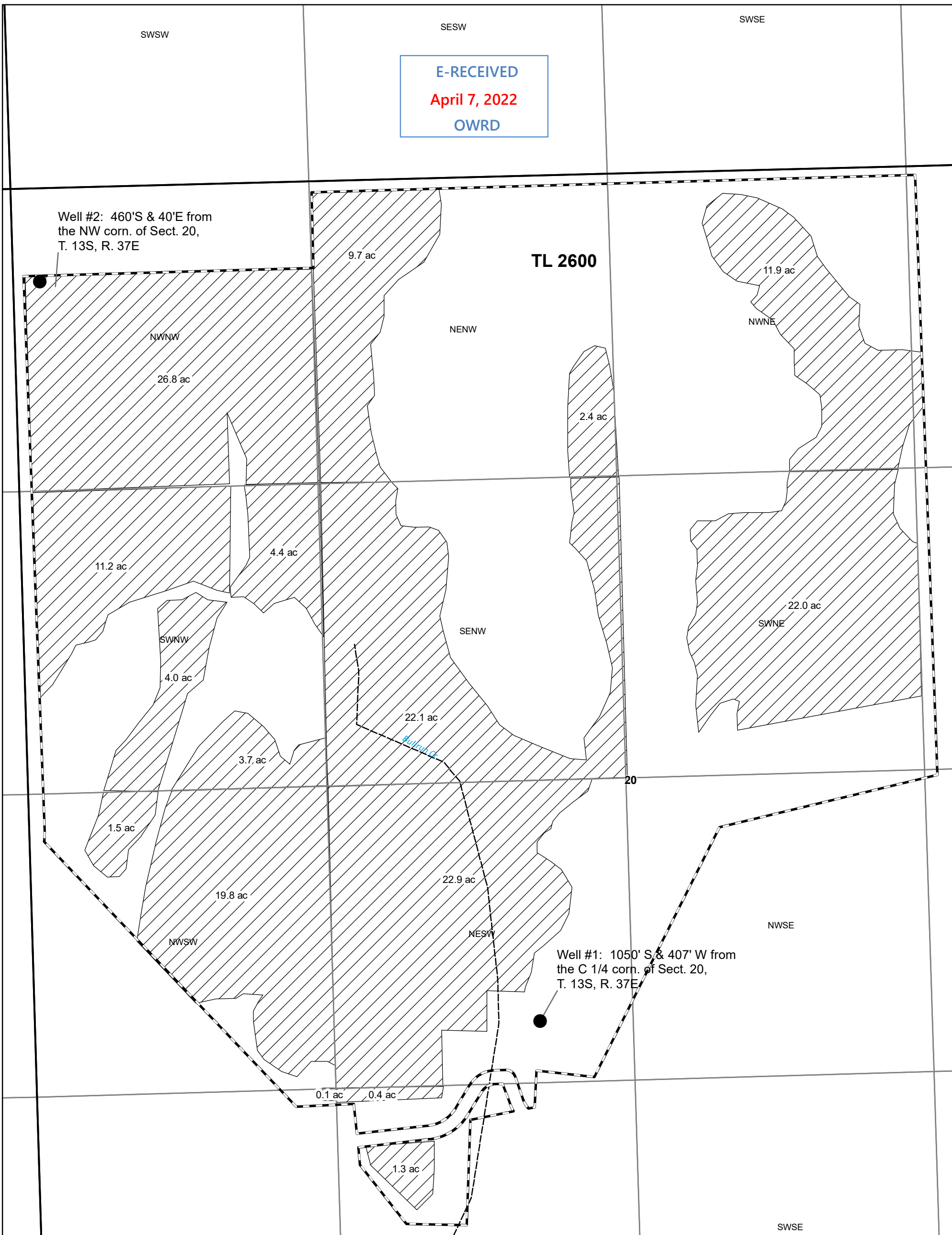
Well Location

**T. 13S, R. 37E  
Sect. 20**

E-RECEIVED  
April 7, 2022  
OWRD

Well #2: 460'S & 40'E from  
the NW corn. of Sect. 20,  
T. 13S, R. 37E

**TL 2600**



Well #1: 1050' S & 407' W from  
the C 1/4 corn. of Sect. 20,  
T. 13S, R. 37E