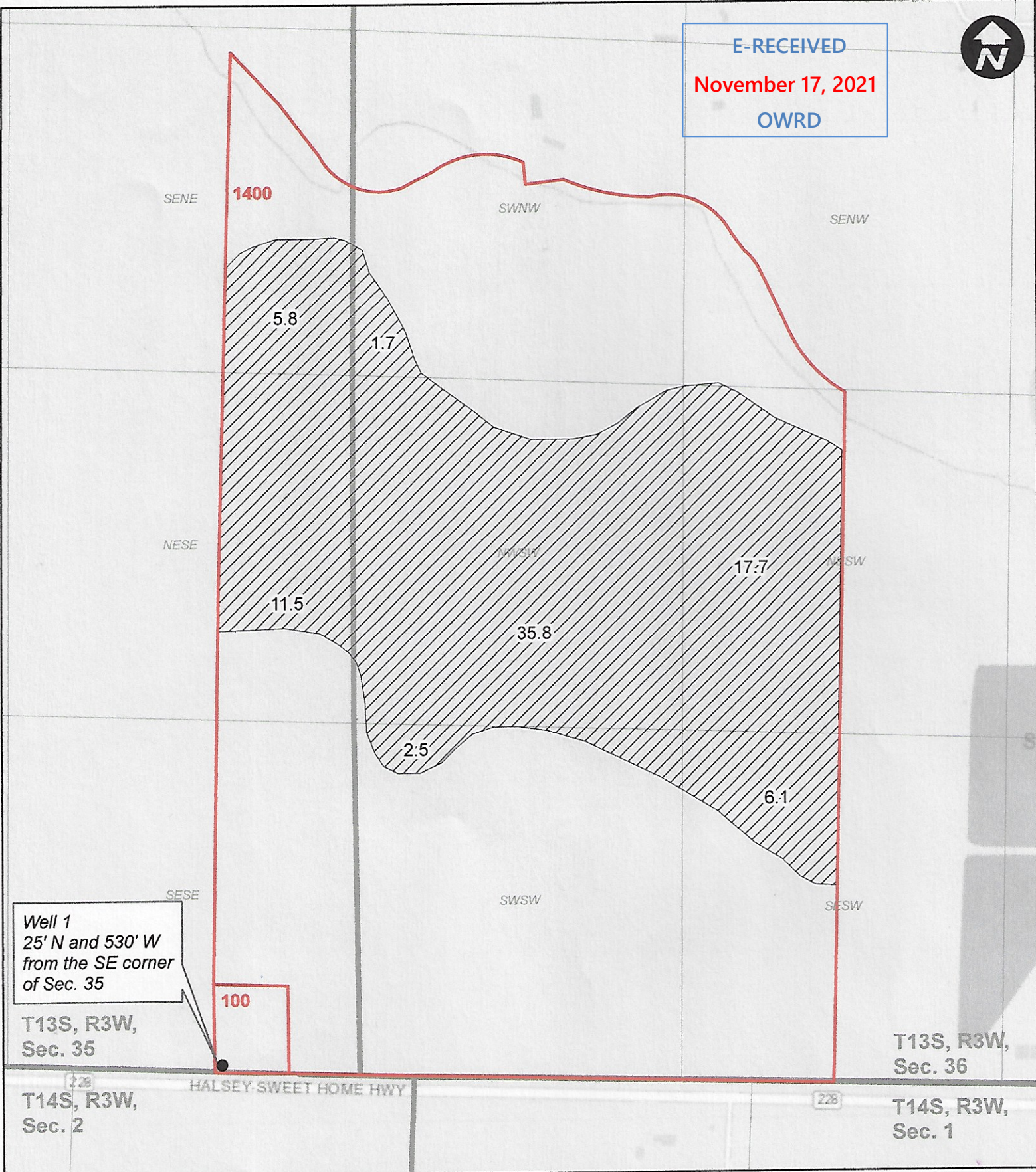


Groundwater Application - L3 Farms, Inc.

REVISED 11/16/2021

E-RECEIVED
November 17, 2021
OWRD



Well 1
25' N and 530' W
from the SE corner
of Sec. 35

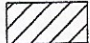

T13S, R3W,
Sec. 35

T14S, R3W,
Sec. 2

T13S, R3W,
Sec. 36

T14S, R3W,
Sec. 1

Legend

-  Proposed POU (81.1 ac.)
-  Taxlots