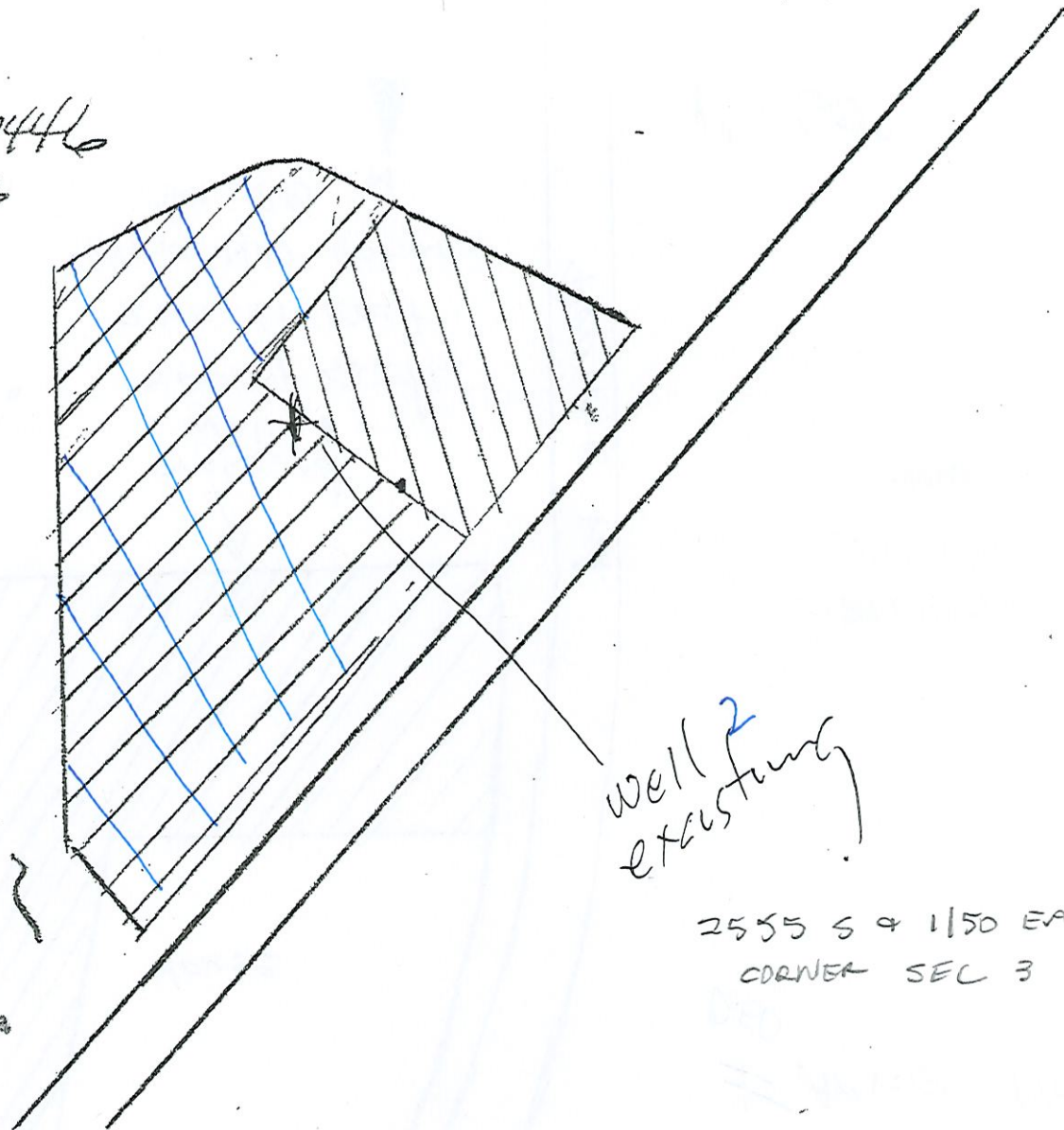


Mobile RV/Auto ~~Trailer~~
24040 Hwy 99E
Harrisburg OR, 97446
T R S taxlot
15S 4W 3 401

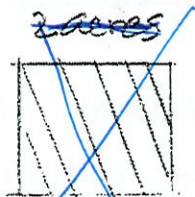
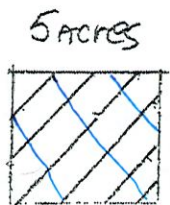


RECEIVED
JAN 13 2020
OWRD

well 2
etcustungy

2555 S & 1150 EAST NW
CORNER SEC 3

RECEIVED
JAN 13 2020
OWRD



nursery

~~nursery~~

1" = 140'



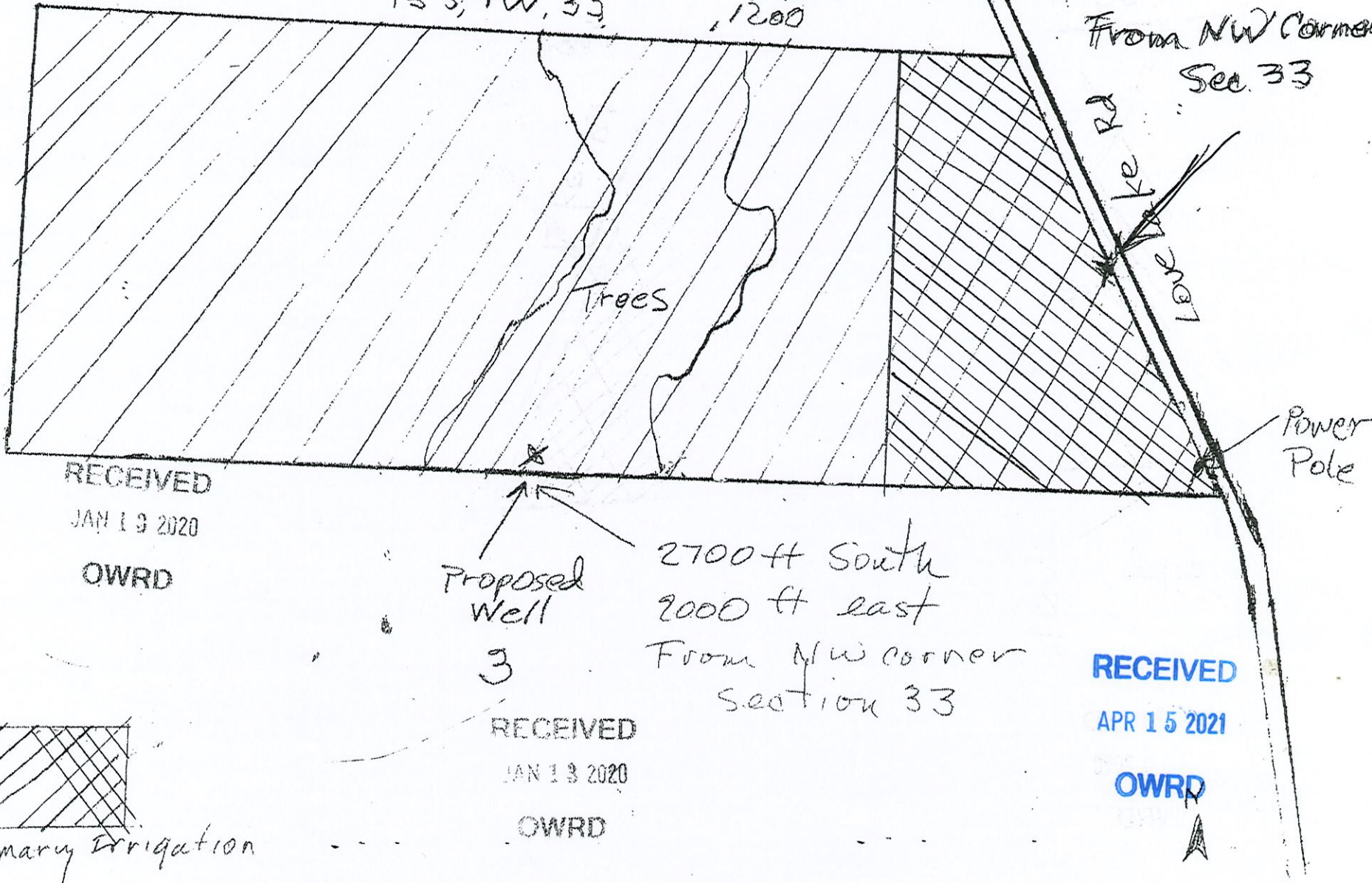
Mobile RV/Auto Inc.

20 Acres
Primary Irrigation
T₁₅S, R₄W, 33, Twp 06, 1200

New Well

Proposed Well
2450ft South
2800ft East

From NW Corner
Sec. 33



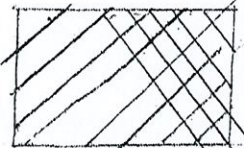
RECEIVED
JAN 13 2020
OWRD

Proposed Well
3

2700 ft South
2000 ft East
From NW corner
Section 33

RECEIVED
APR 15 2021
OWRD

RECEIVED
JAN 13 2020
OWRD

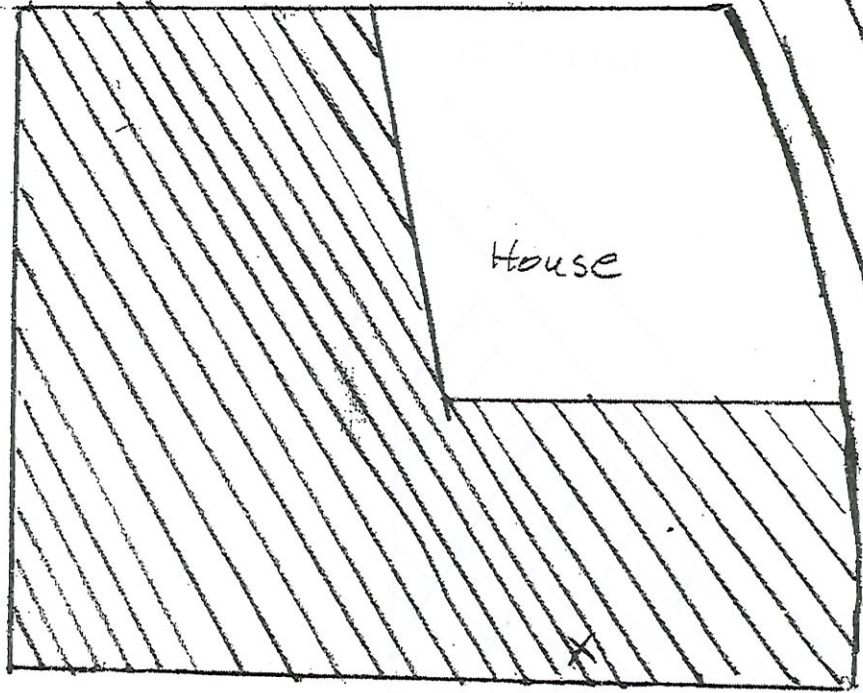

primary Irrigation

1" = 200'

Mobile RV/Auto Inc.
Jerry - 541-514-9486

91760 Prairie Rd
Junction City, OR 97448
T R S Taxlot
165 4W 28 208

± Acre Nursery
0.50

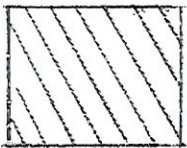


RECEIVED
JAN 13 2020
OWRD

RECEIVED
JAN 13 2020
OWRD

proposed well 1
1500 ft South
2700 ft East
from NW corner
Sec. 28

Prairie rd.

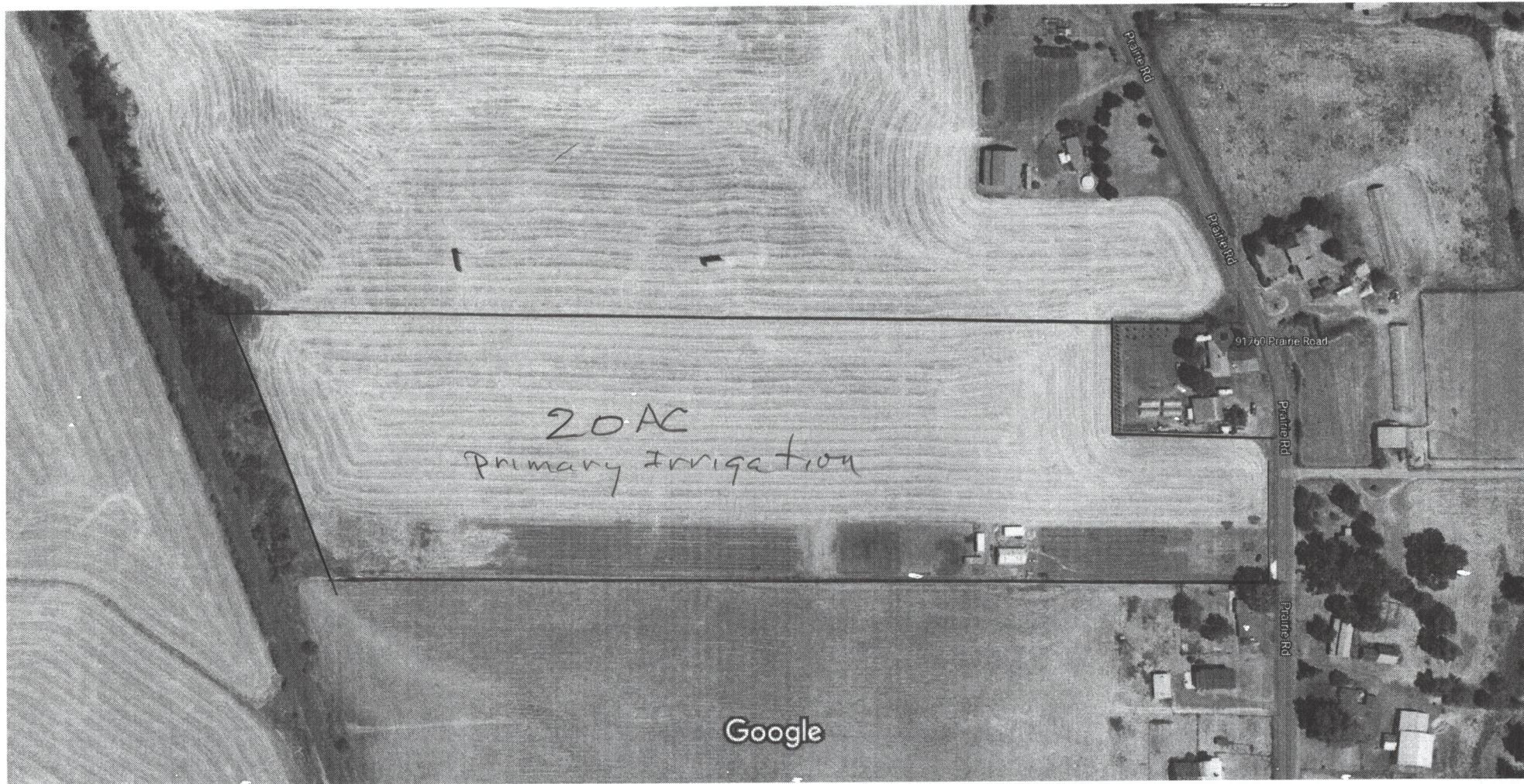


Nursery



1" = 60"

01-102003



Imagery ©2020 Maxar Technologies, State of Oregon, Map data ©2020 100 ft

RECEIVED

FEB 24 2020

OWRD

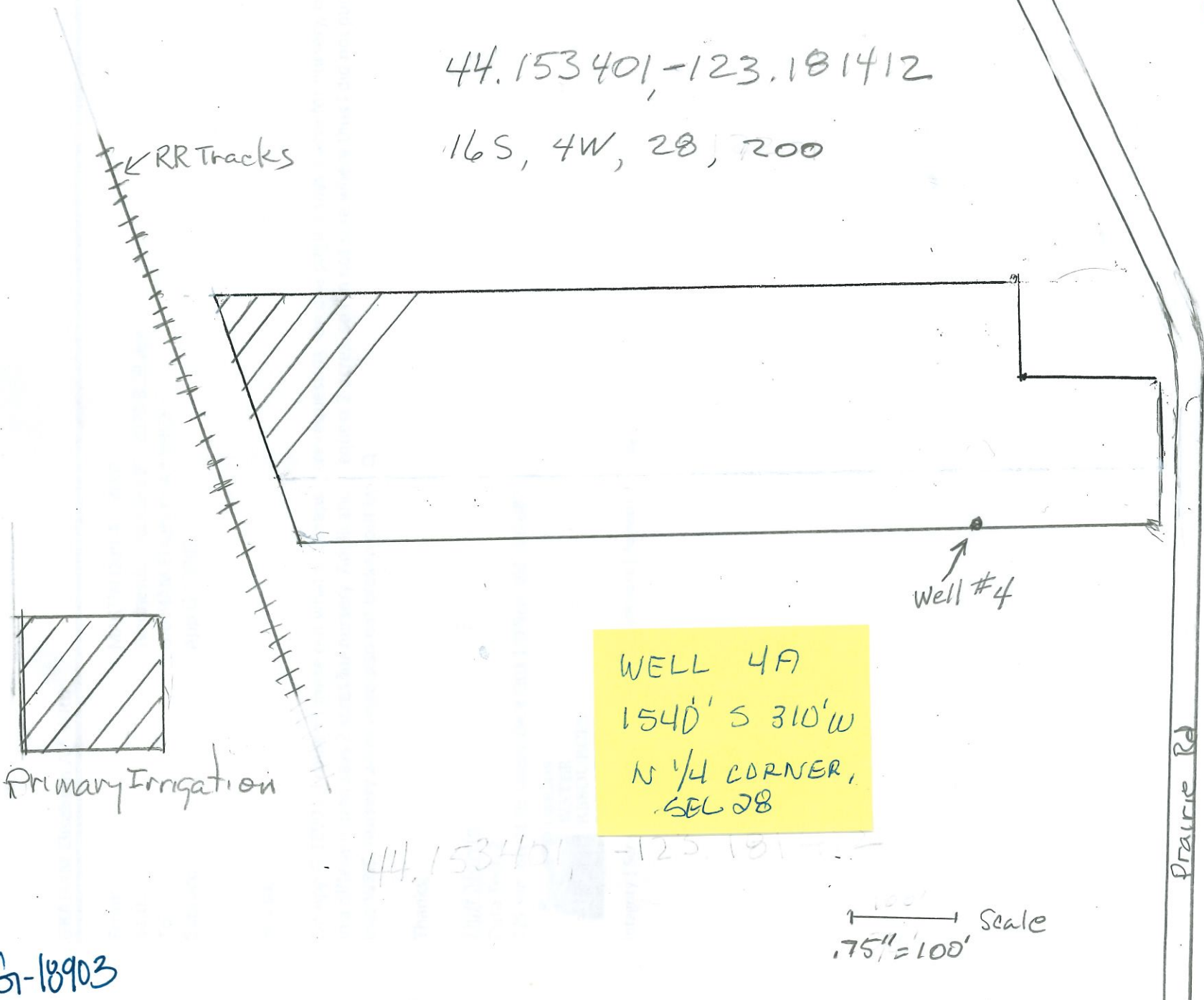
44.153401 -123.101412

61-18903

Mobile RV/Auto Inc,
20AC Primary Irrigation

RECEIVED
FEB 24 2020
OWRD

44.153401, -123.181412
16S, 4W, 28, 200



G-18903