

SECTION 17 T.33S. R.10E. W.M.
KLAMATH COUNTY

39 10 17

THIS MAP WAS PREPARED FOR
ASSESSMENT PURPOSE ONLY.

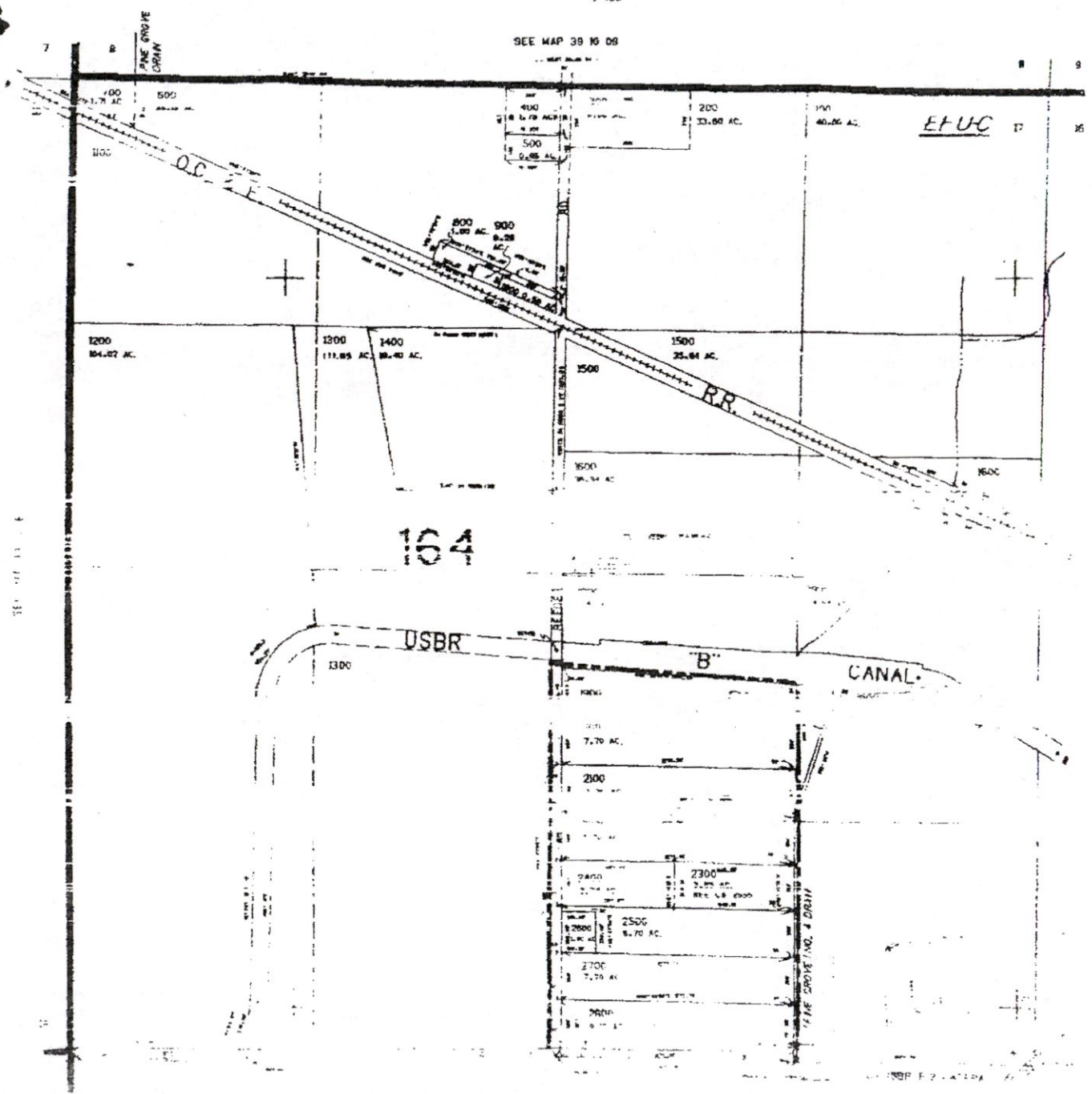
1"=400'

SEE MAP 39 10 08



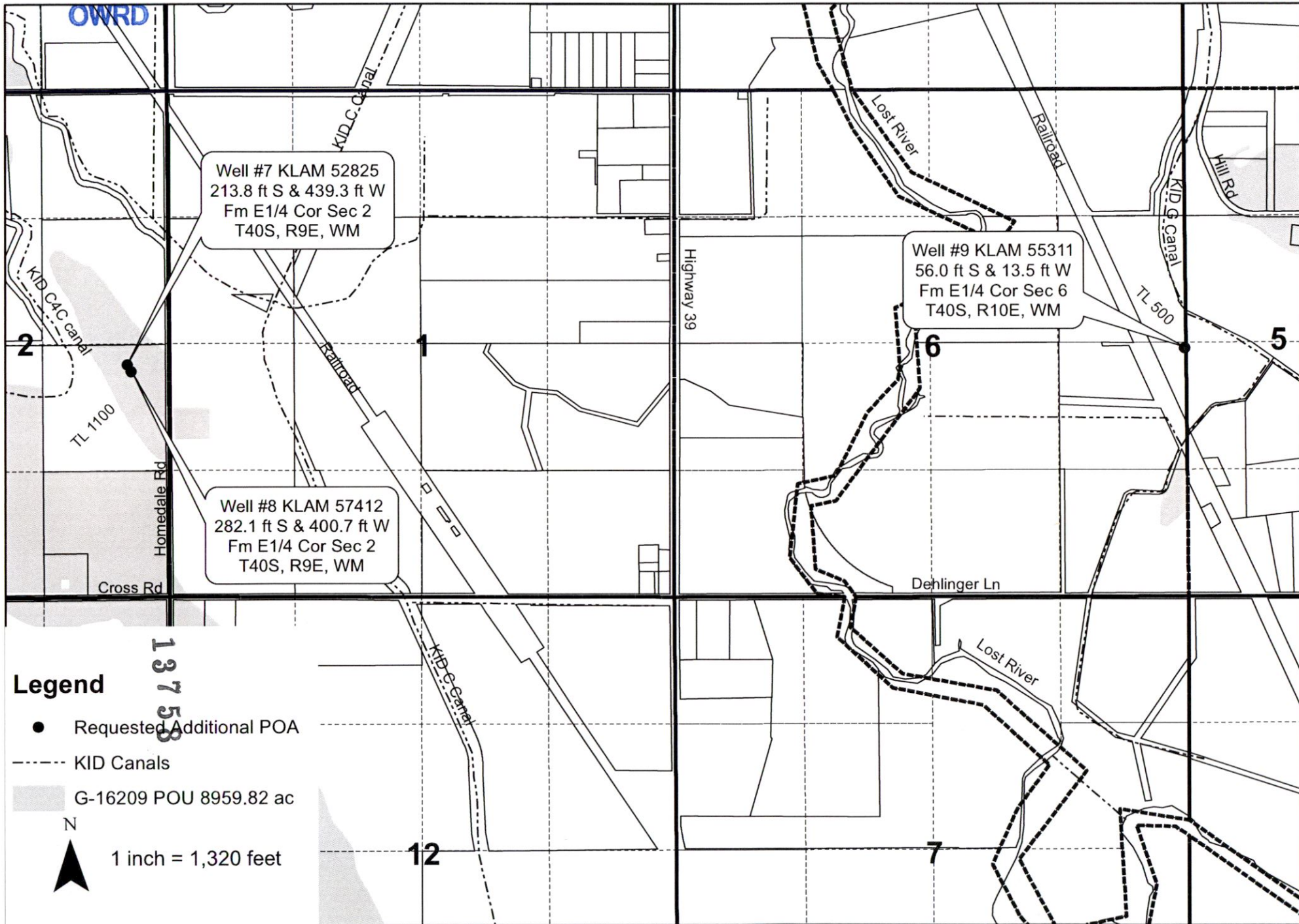
RECEIVED
JUL 01 2021
OWRD

KLAM 54078



13758

Klamath Basin Improvement District Permit Amendment Map T-16209



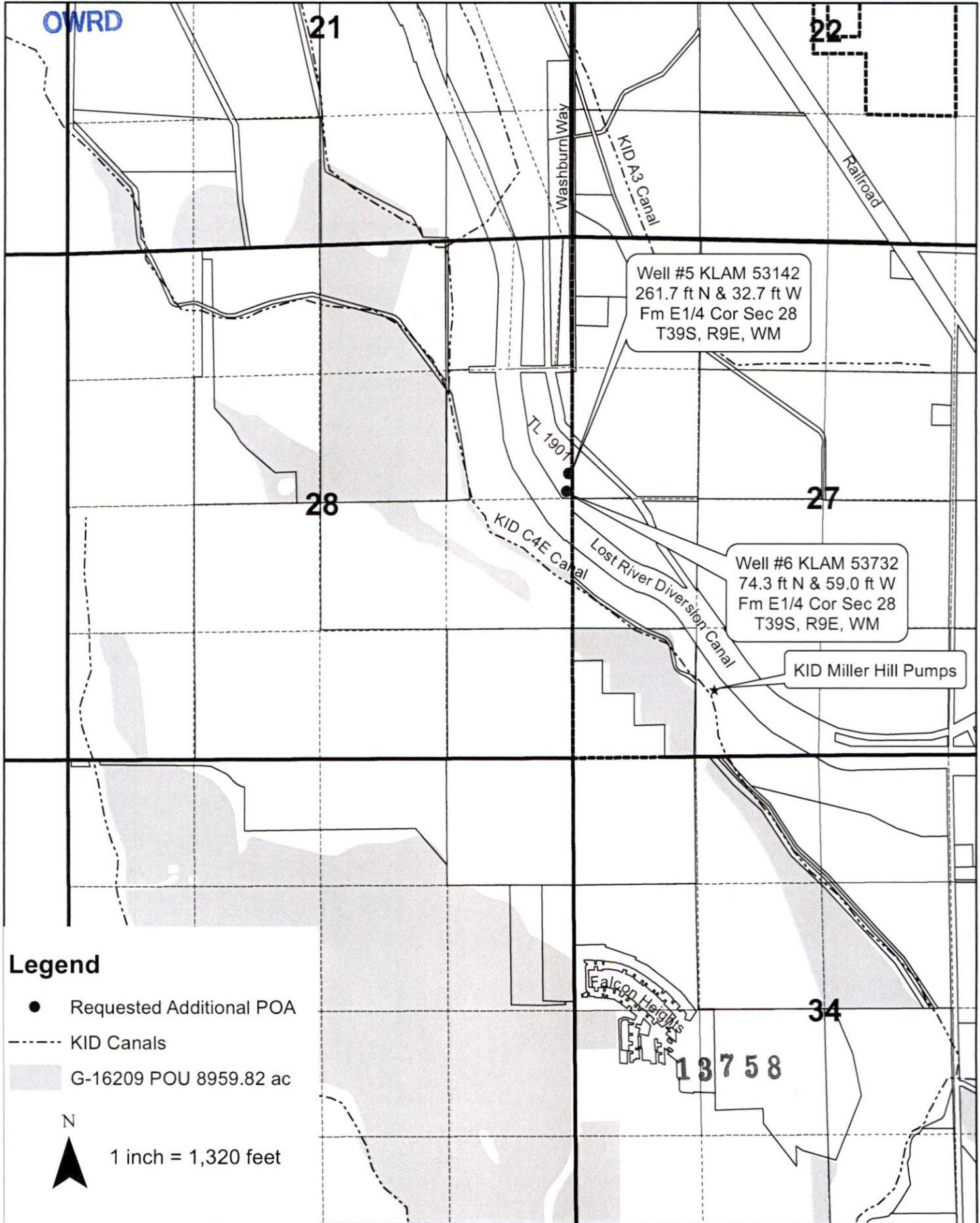
Legend

- Requested Additional POA
- - - KID Canals
- G-16209 POU 8959.82 ac

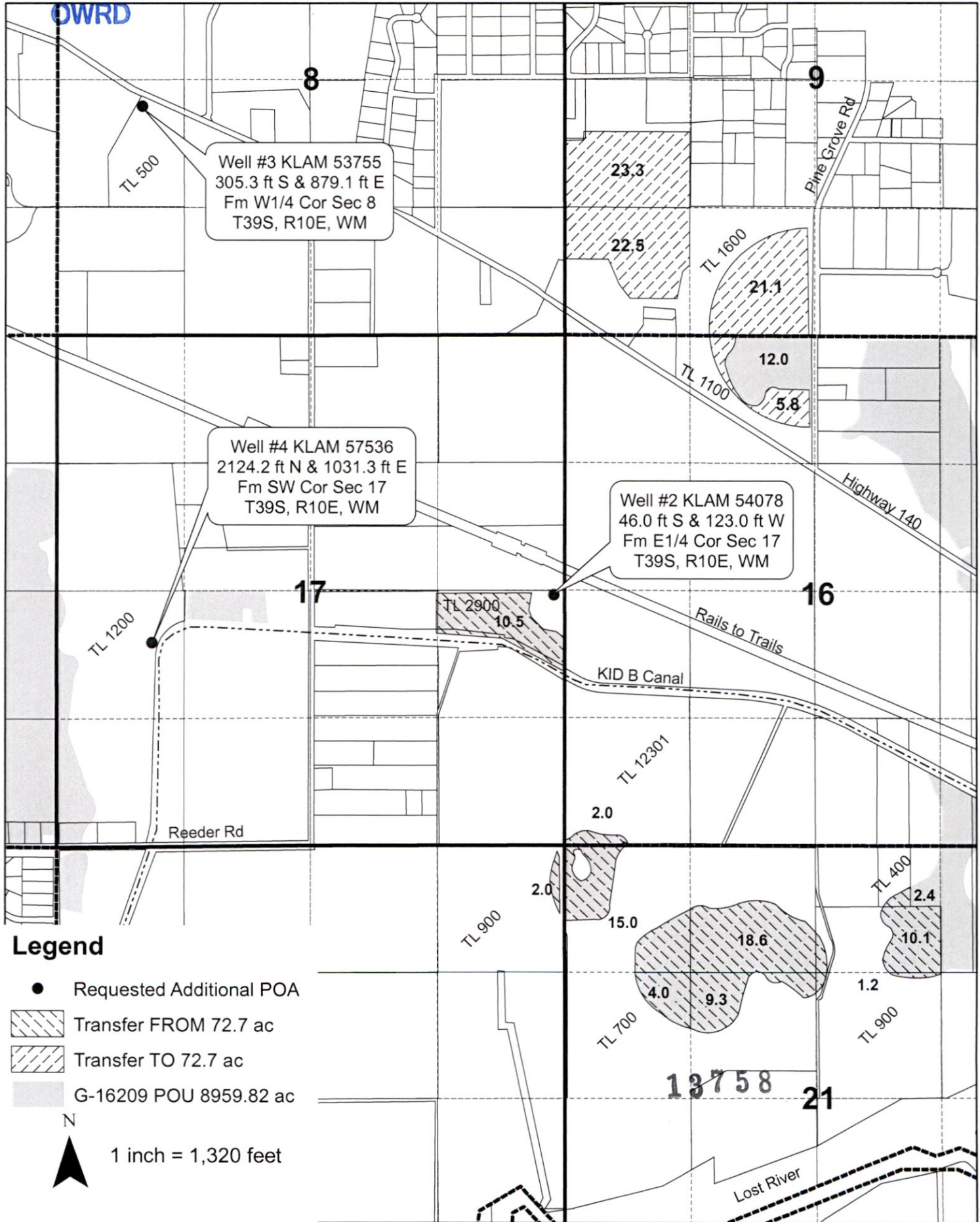


1 inch = 1,320 feet

13758



Klamath Basin Improvement District Permit Amendment Map G-16209



Klamath Basin Improvement District Permit Amendment Map T-16209

T 39 S, R 10 E

Sec 27

Map 1 of 4

