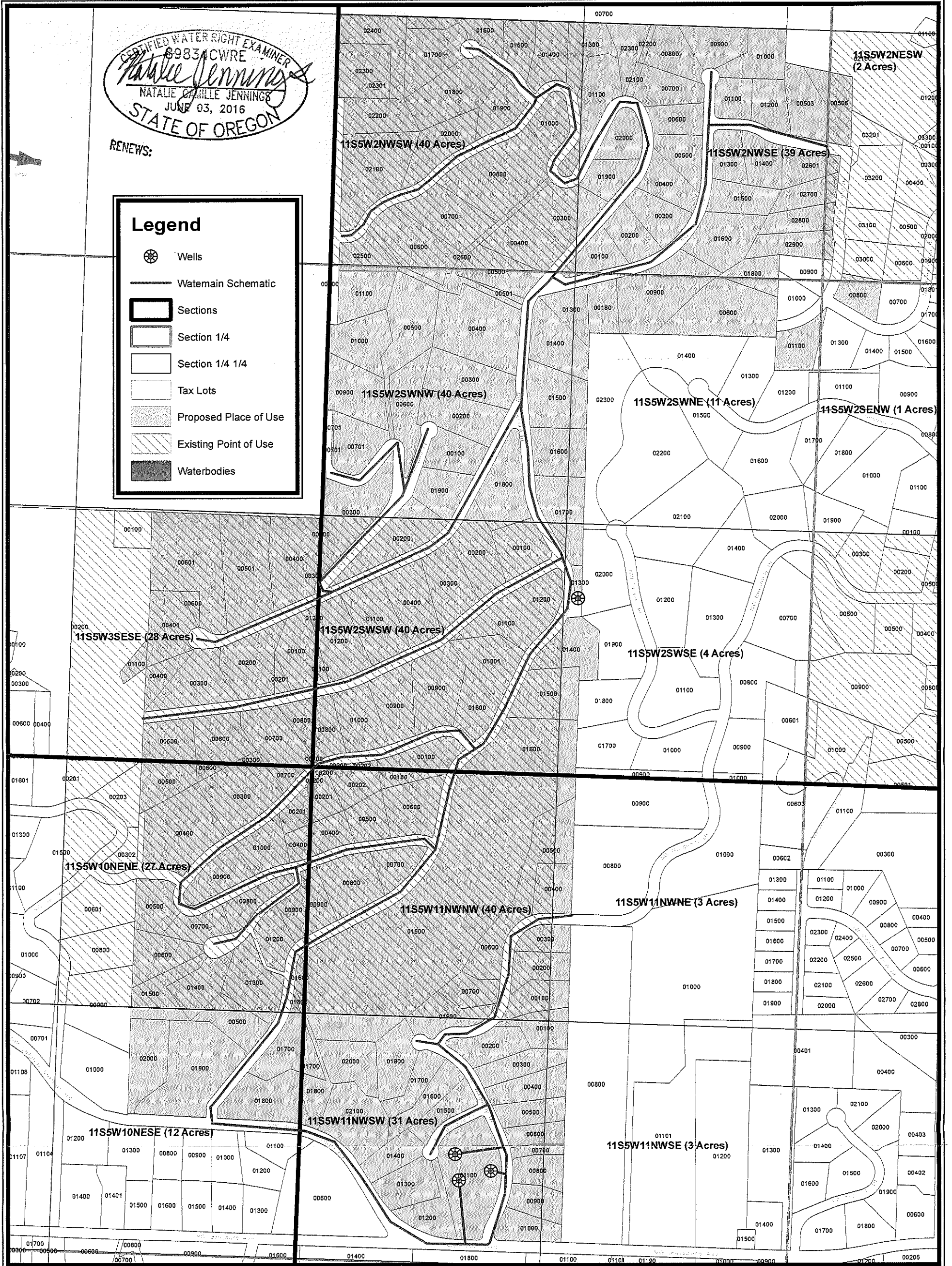


CERTIFIED WATER RIGHT EXAMINER  
 89834CWRE  
*Natalie Jennings*  
 NATALIE CAMILLE JENNINGS  
 JUNE 03, 2016  
 STATE OF OREGON

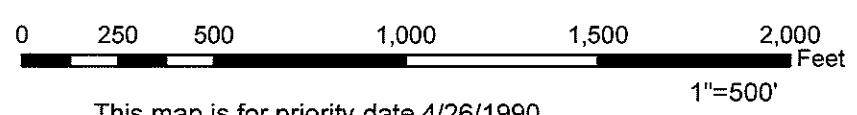
RENEWS:

**Legend**

- Wells
- Watermain Schematic
- Sections
- Section 1/4
- Section 1/4 1/4
- Tax Lots
- Proposed Place of Use
- Existing Point of Use
- Waterbodies



Service Layer Credits: Sources: Esri, HERE, Garmin, USGS, Intermap, INCREMENT P, NRCan, Esri Japan, METI, Esri China (Hong Kong), Esri Korea, Esri (Thailand), NGCC, (c)



This map is for priority date 4/26/1990  
 All Sections shown are in Township 11S Range 5W  
 All Existing Places of Use are 40 Acres per 1/4 1/4

Abandoned POA Well#1: 540 ft. North and 860 ft. East from the W 1/4 corner of section 11  
 POA Well#2: 420 ft. North and 1020 ft. East from the W 1/4 corner of section 11  
 Abandoned POA Well#3: 1010 ft. North and 1360 ft. East from the SW 1/4 corner of section 2  
 POA Well#4: 375 ft. North and 500 ft. East from the W 1/4 corner of section 11  
 POA Well#5: 380 ft. North and 860 ft. East from the W 1/4 corner of section 11

	<p><b>Transfer Map</b></p>	<p><b>Vineyard Mountain Water System</b></p>	<p>RECEIVED        MAY 23 2022        G-18326        OWRD</p>	<p style="font-size: 2em; font-weight: bold;">1</p>
--	----------------------------	--	---	---