

**Permit Amendment
Permit G-11134
(Application G-11241)
To Lands and Authorized and
Proposed Points of Appropriation
Iseli Nursery
Clackamas County
Township 2 South, Range 3 and 4
East (W.M.)**

LEGEND

- Proposed APOA
- ⊙ Authorized Point of Appropriation (POA)
- ▨ To Lands
- Tax Lot
- Major Road
- ~ Watercourse
- ▭ Waterbody

RECEIVED

AUG 18 2021

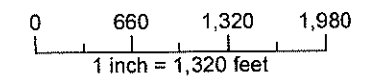
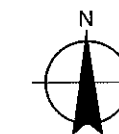
OWRD

POA LOCATION DESCRIPTIONS

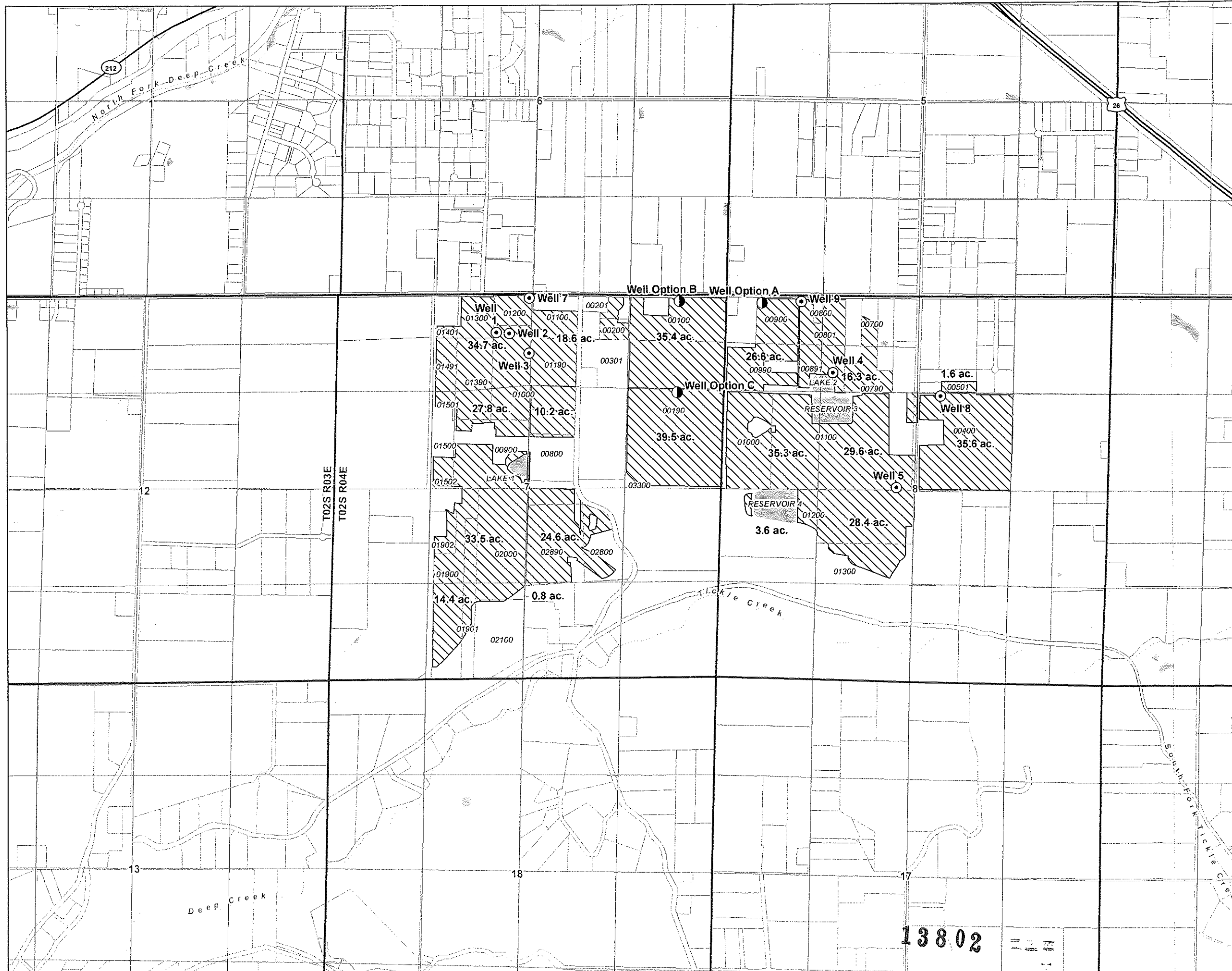
- Well 1 (CLAC 5615): Located 525 feet South and 2,165 feet East from the NW corner of Section 7, Township 2 South, Range 4 East (W.M.)
- Well 2 (CLAC 5593): Located 535 feet South and 2,335 feet East from the NW corner of Section 7, Township 2 South, Range 4 East (W.M.)
- Well 3 (CLAC 5591): Located 810 feet South and 2,610 feet East from the NW corner of Section 7, Township 2 South, Range 4 East (W.M.)
- Well 4 (CLAC 5619): Located 1,050 feet South and 1,460 feet East from the NW corner of Section 8, Township 2 South, Range 4 East (W.M.)
- Well 5 (CLAC 5639): Located 2,600 feet South and 2,350 feet East from the NW corner of Section 8, Township 2 South, Range 4 East (W.M.)
- Well 7 (CLAC 68983): Located 60 feet South and 2,600 feet East from the NW corner of Section 7, Township 2 South, Range 4 East (W.M.)
- Well 8 (CLAC 5622): Located 1,360 feet South and 2,330 feet West from the NE corner of Section 8, Township 2 South, Range 4 East (W.M.)
- Well 9 (Not constructed): Located 85 feet South and 1,015 feet East from the NW corner of Section 8, Township 2 South, Range 4 East (W.M.)
- Well Option A (Not constructed): Located 85 feet South and 485 feet East from the NW corner of Section 8, Township 2 South, Range 4 East (W.M.)
- Well Option B (Not constructed): Located 105 feet South and 640 feet West from the NE corner of Section 7, Township 2 South, Range 4 East (W.M.)
- Well Option C (Not constructed) - Located 1345 feet South and 640 feet West from the NE corner of Section 7, Township 2 South, Range 4 East (W.M.)

DISCLAIMER

This map was prepared for the purpose of identifying the location of a water right only and it is not intended to provide legal dimensions or location of property ownership lines.



Date: July 7, 2021
Data Sources: BLM, ESRI, ODOT, USGS, METRO Water Solutions, Inc.



**Permit Amendment
Permit G-11134
(Application G-11241)
From Lands and Authorized
Points of Appropriation
Iseli Nursery
Clackamas County
Township 2 South, Range 3 and 4
East (W.M.)**

LEGEND

- ⊙ Authorized Point of Appropriation (POA)
- ▨ From Lands
- ⊕ Tax Lot
- Major Road
- ~ Watercourse
- ≡ Waterbody

RECEIVED

AUG 18 2021

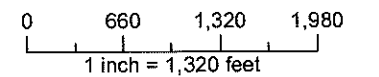
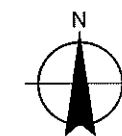
OWRD

POA LOCATION DESCRIPTIONS

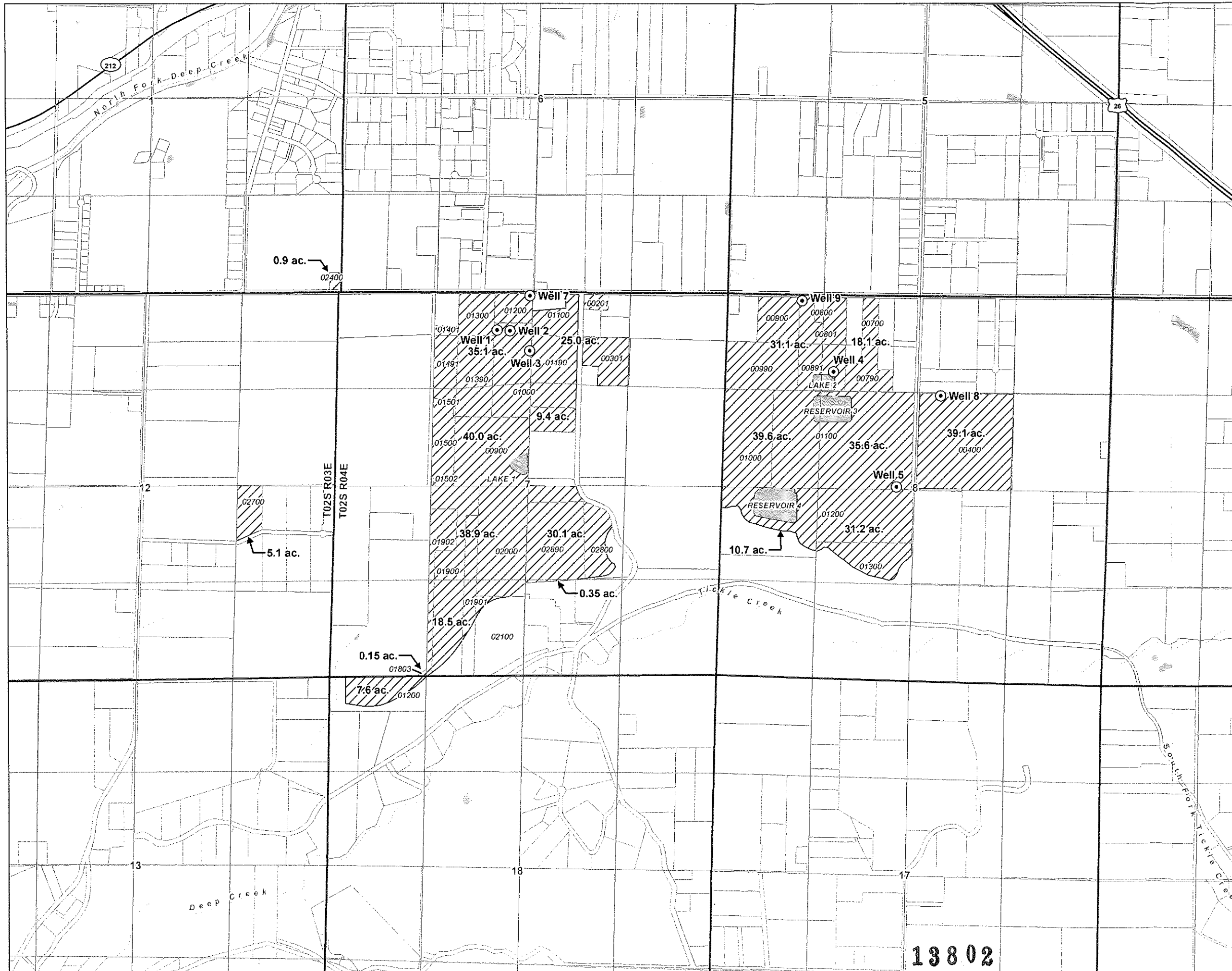
Well 1 (CLAC 5615): Located 525 feet South and 2,165 feet East from the NW corner of Section 7, Township 2 South, Range 4 East (W.M.)
 Well 2 (CLAC 5593): Located 535 feet South and 2,335 feet East from the NW corner of Section 7, Township 2 South, Range 4 East (W.M.)
 Well 3 (CLAC 5591): Located 810 feet South and 2,610 feet East from the NW corner of Section 7, Township 2 South, Range 4 East (W.M.)
 Well 4 (CLAC 5619): Located 1,050 feet South and 1,460 feet East from the NW corner of Section 7, Township 2 South, Range 4 East (W.M.)
 Well 5 (CLAC 5639): Located 2,600 feet South and 2,350 feet East from the NW corner of Section 8, Township 2 South, Range 4 East (W.M.)
 Well 7 (CLAC 68983): Located 60 feet South and 2,600 feet East from the NW corner of Section 7, Township 2 South, Range 4 East (W.M.)
 Well 8 (CLAC 5622): Located 1,360 feet South and 2,330 feet West from the NE corner of Section 8, Township 2 South, Range 4 East (W.M.)
 Well 9 (Not constructed): Located 85 feet South and 1,015 feet East from the NW corner of Section 8, Township 2 South, Range 4 East (W.M.)

DISCLAIMER

This map was prepared for the purpose of identifying the location of a water right only and it is not intended to provide legal dimensions or location of property ownership lines.



Date: July 7, 2021
 Data Sources: BLM, ESRI, ODOT, USGS, METRO Water Solutions, Inc.



13802