

E-RECEIVED
AUG 02 2021
OWRD

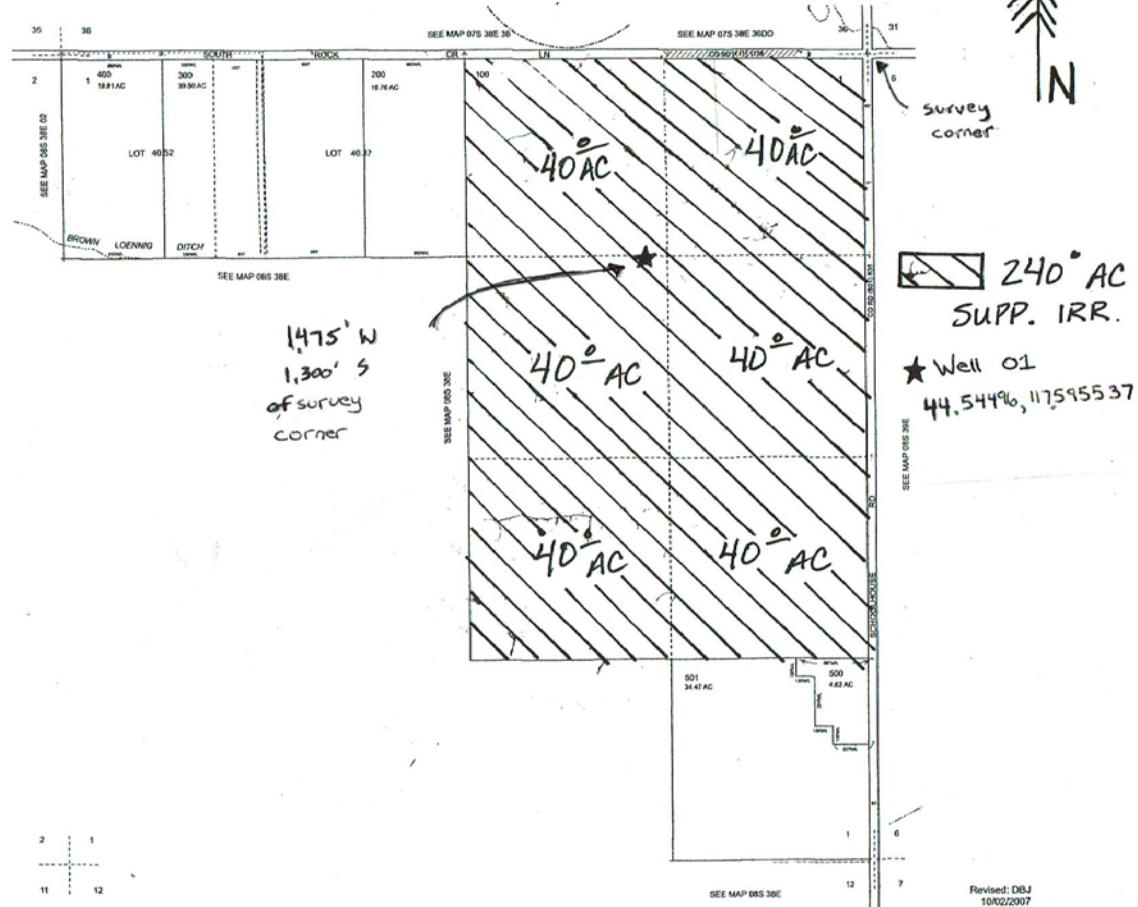
THIS MAP WAS PREPARED FOR
ASSESSMENT PURPOSE ONLY



SECTION 1 T.8S. R.38E. W.M.
BAKER COUNTY

08S38E01

1 inch = 1,320 feet



Revised: DBJ
10/02/2007

08S38E01