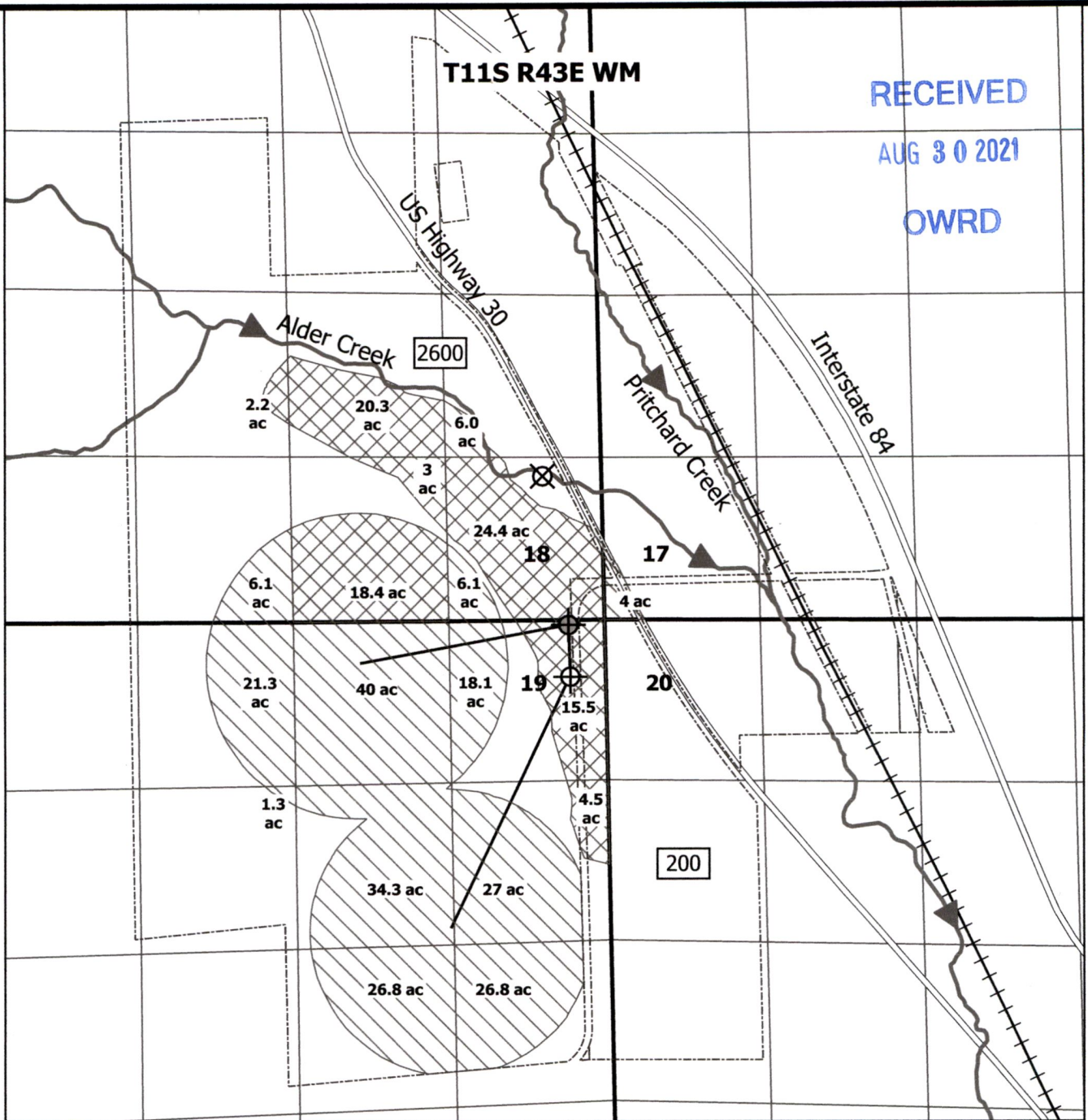


T11S R43E WM

RECEIVED

AUG 30 2021

OWRD



LEGEND

- Irrigated Area - Primary
- Irrigated Area - Supplemental
- Baker County Taxlot Boundary
- Well 1
- Well 2
- Proposed well
- 10" Mainline

Garvin HydroGeo LLC

Map to Accompany Application for Permit Amendment Permit G-17588 Baker County, OR

Prepared on behalf of Bert and Terri Siddoway



Notes:

- Well 1 (L-101882): 37 ft S and 325 ft W from NE corner of Section 19
- Well 2 (L-109663): 466 ft S and 295 ft W from NE corner of Section 19
- Well 3 (Proposed): Within a 100 ft radius of 1,203 ft N and 499 ft W from SE corner of Section 18

This map is not intended to provide legal dimensions or locations of

Drawn by: Paul F. Garvin, R.G. C.W.R.E. Date: 8/25/21

1 inch = 1,320 feet