

Document Path: Y:\0927_NW_Housing_Alternatives\Source_Figures\001_Original\POA_POU_Ontario_Housing_Project.mxd_wimmon

LEGEND

-  Point of Appropriation (POA)
-  Place of Use (POU)
-  Government Lot (GL)
-  Tax Lots
-  Major Road
-  Railroad
-  Watercourse
-  Waterbody

**Application for a Permit to Use Groundwater
Proposed Point of Appropriation and Place of Use**

Malheur County
Township 18 South, Range 47 East (W.M.)

RECEIVED

JUL 05 2022

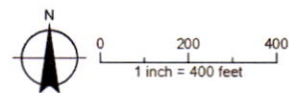
OWRD DISCLAIMER

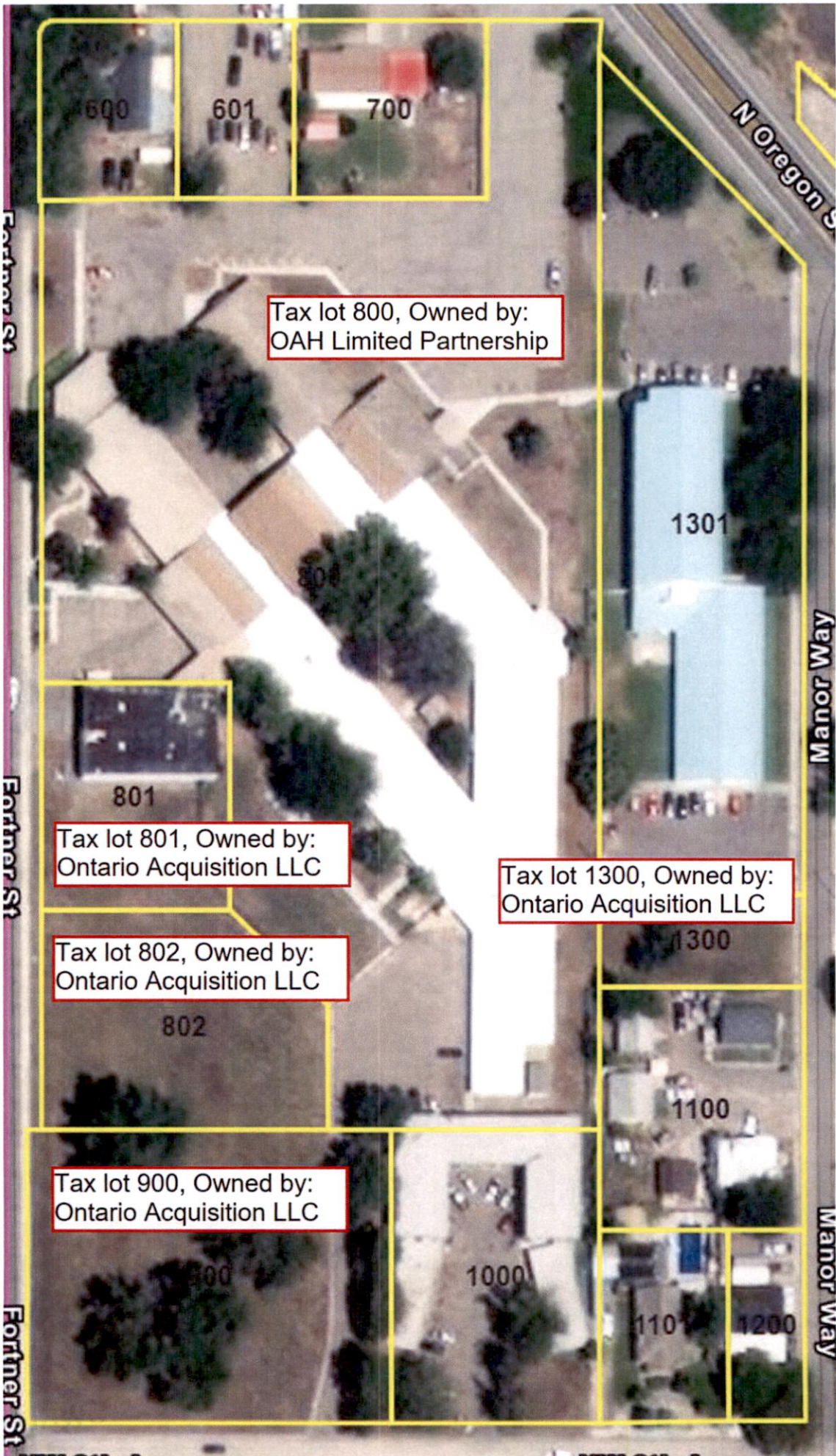
This map was prepared for the purpose of identifying the location of a water right only and it is not intended to provide legal dimensions or location of property ownership lines.

Date: March 31, 2022
Data Sources: BLM, ESRI, OWRD, USGS

LOCATION DESCRIPTION

MALH 52101
Located 1,280 feet South and 40 feet East from the NW corner of Section 3, Township 18 South, Range 47 East (W.M.)





Tax lot 800, Owned by:
OAH Limited Partnership

Tax lot 801, Owned by:
Ontario Acquisition LLC

Tax lot 802, Owned by:
Ontario Acquisition LLC

Tax lot 900, Owned by:
Ontario Acquisition LLC

Tax lot 1300, Owned by:
Ontario Acquisition LLC

RECEIVED
JUL 05 2022
OWRD