

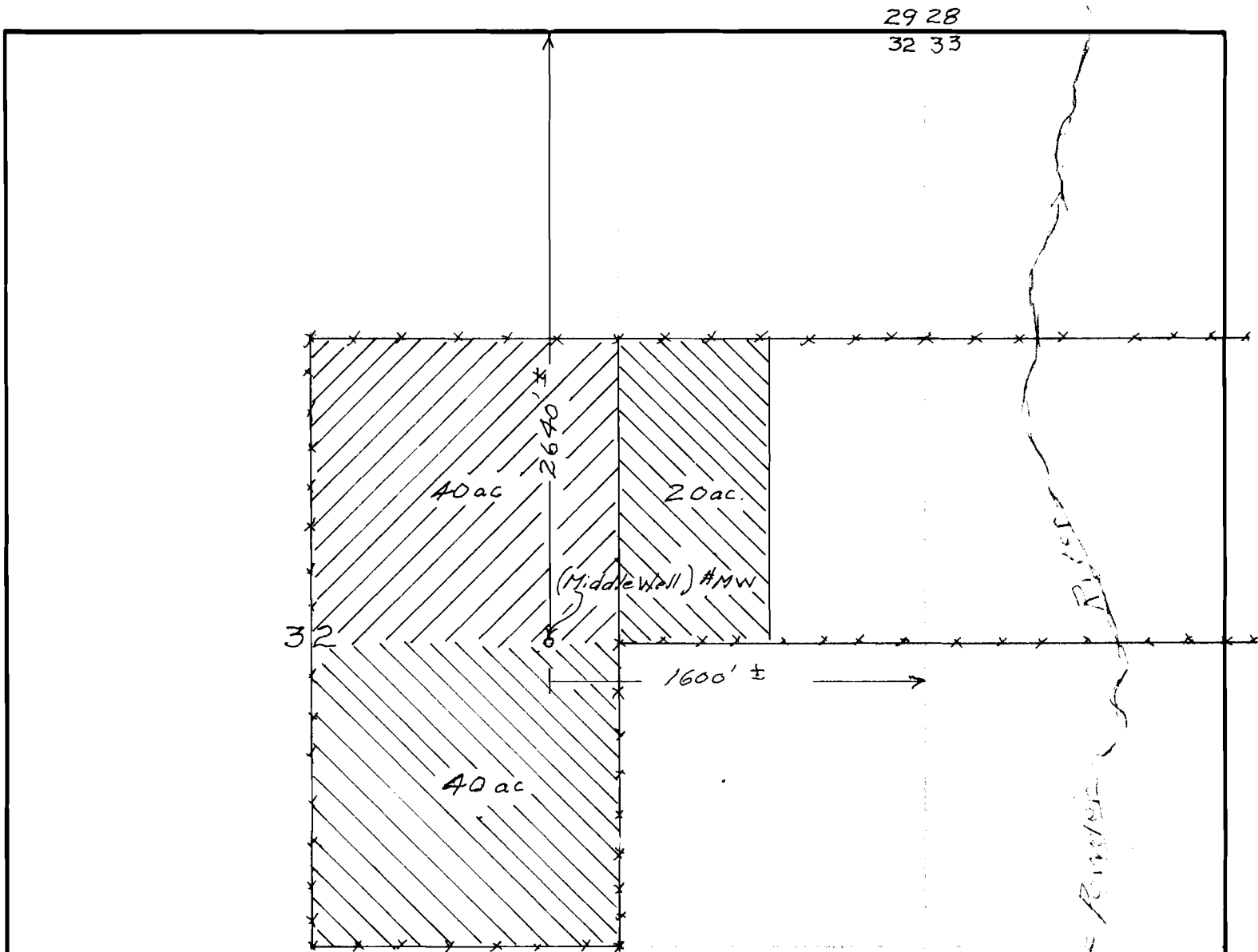
Program Year 1960-61

Operator Francis & Powers

A.C.P. Farm No. _____

County Baker, Oregon

Section 32 Township 8 South Range 40 E WM Aerial Photo No. 3B 42-12 SCS
9-20-38



RECEIVED
AUG 20 1961

STATE ENGINEER
SALEM, OREGON

[Stamp]

Harry J. Swan

[Stamp]

Application No. G-201
Permit No. G-1932