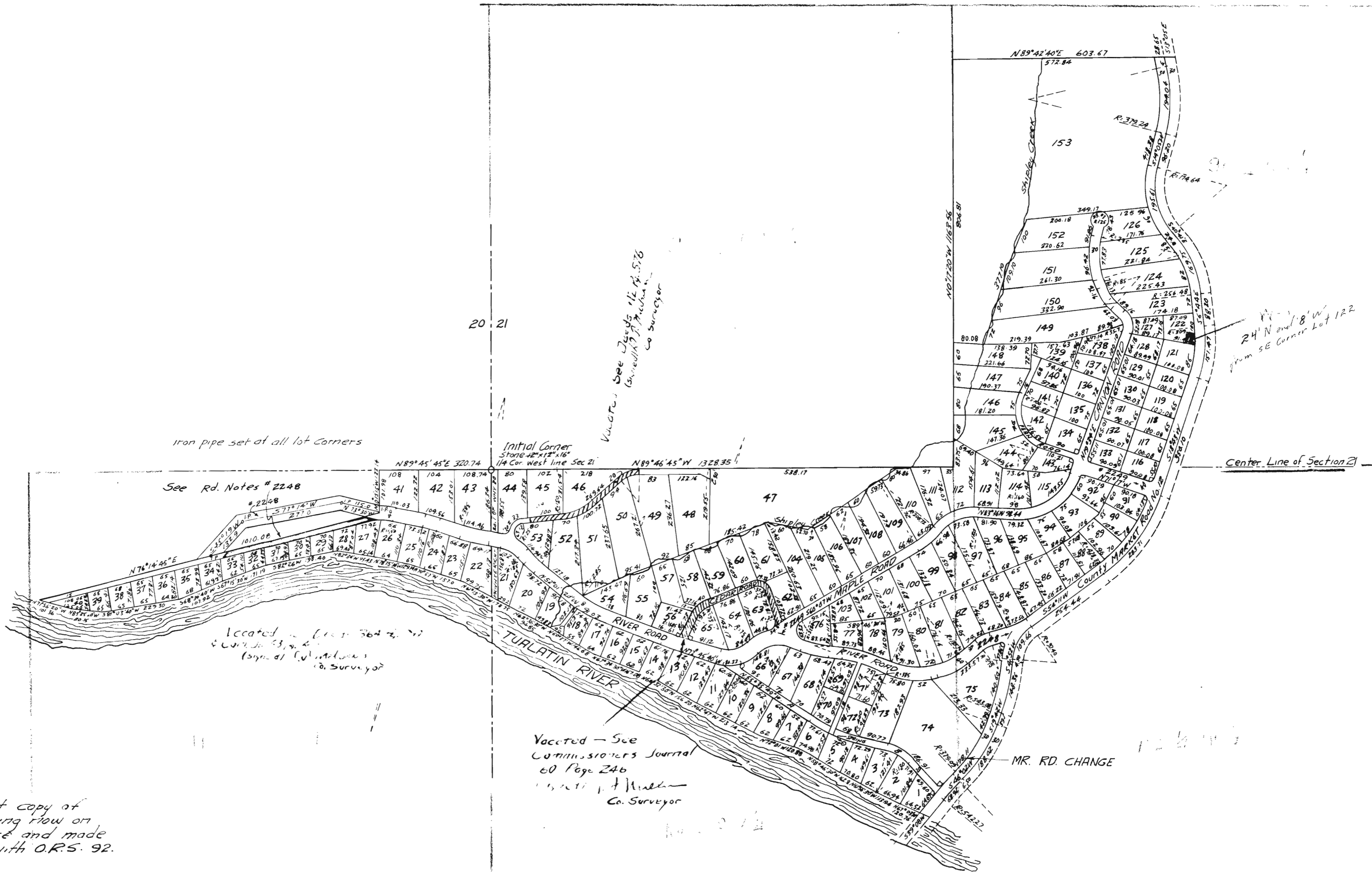


MOSSY BRAE

IN SECTIONS 20 & 21, T2S, R1E, W.M. CLACKAMAS COUNTY OREGON
SURVEYED JUNE 1928 BY D.J. SAGE SCALE 1IN. = 200 FT.



See Rd. Notes # 2248

located in [unclear] 364 74, 75
[unclear] [unclear] [unclear]
[unclear] [unclear] [unclear]

Vacated - See
Commissioners Journal
60 Page 246
[unclear] [unclear]
Co. Surveyor

This is a correct copy of
the original tracing now on
file at this office and made
in compliance with O.R.S. 92.
130.

Traced by J. Davis
Compared by R. Orem & L. Robinson