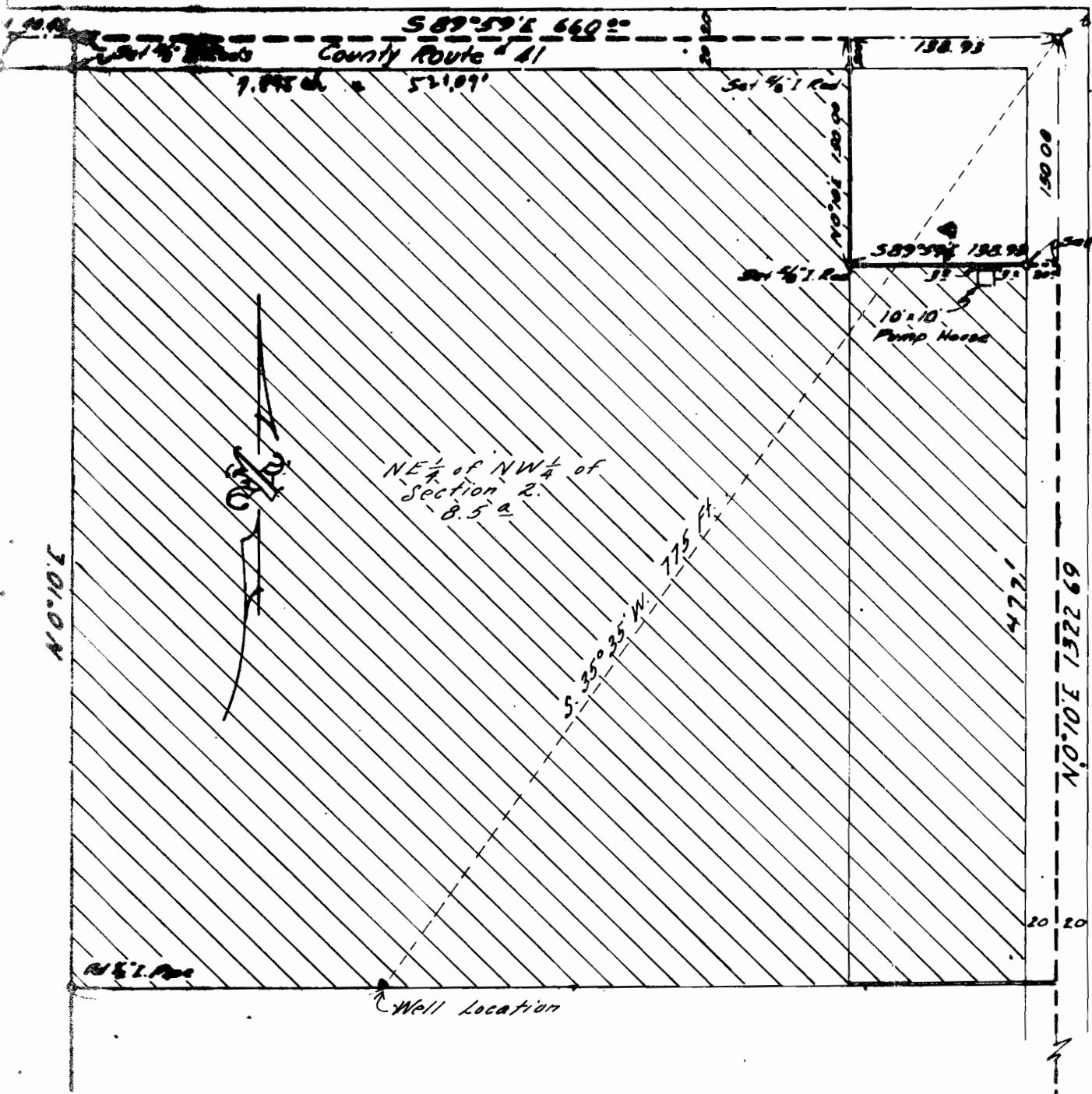


N 1/4 Cor Sec 2 T11S, R4W  
Pd 1/4 Bolt  
E 17' 5 7/8" 100 (O.K.)



CS. 3571  
 Record of Survey  
 for  
**Donald W. Densmoor**  
 in  
 Sec. 2 T. 11 S., R. 4 W. W.B. & M.  
 Benton County, Oregon

Scale 1" = 100'

January 27, 1962

Surveyed  
 by  
*Paul C. Moore*  
 1962

G-2274

SE Cor. NE Cor of SE 1/4 of NW 1/4 Sec 2  
N Pd 1/4 Bolt