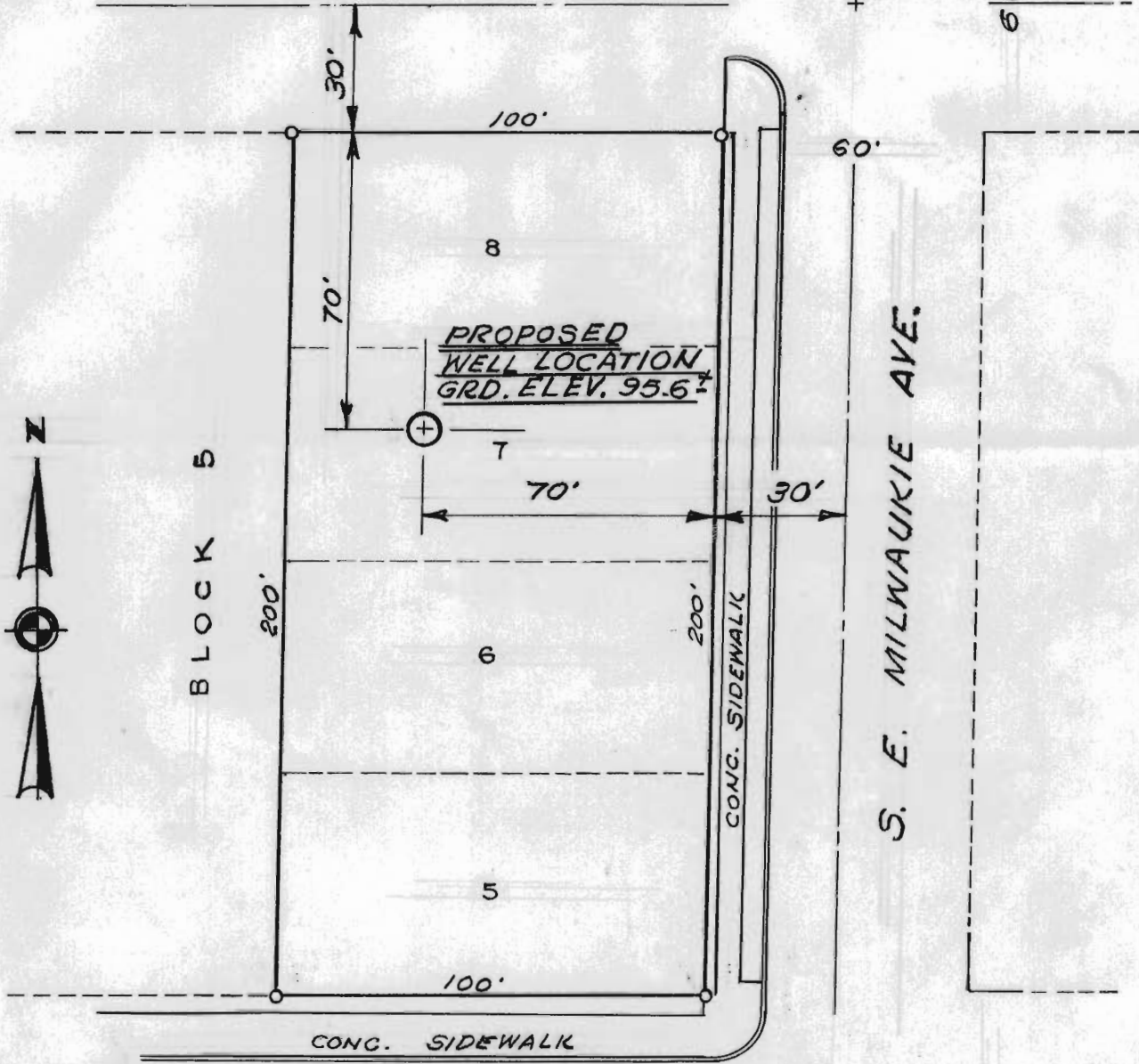


S. E. HAROLD ST.
(NOT IMPROVED)

Gen. Sec. 14
T.1 S., R.1 E., W.1 M.



S. E. ELLIS ST.

RECEIVED
AUG 23 1962

STATE ENGINEER
SAFETY DIVISION

PROPOSED WELL LOCATION
"LOTS 5, 6, 7 & 8 BLOCK 5
BROWN'S TRACT
CITY OF PORTLAND"

Application No. G-2393
Permit No. G-2207

STEVENS & THOMPSON
Consulting Engineers

2234 S. W. FIFTH AVE. PORTLAND, OREGON

DR. L.E.E. CHK. G.R.R. APPV. M.W.R.

DATE 7-24-62 FILE 61-P-77-5138