

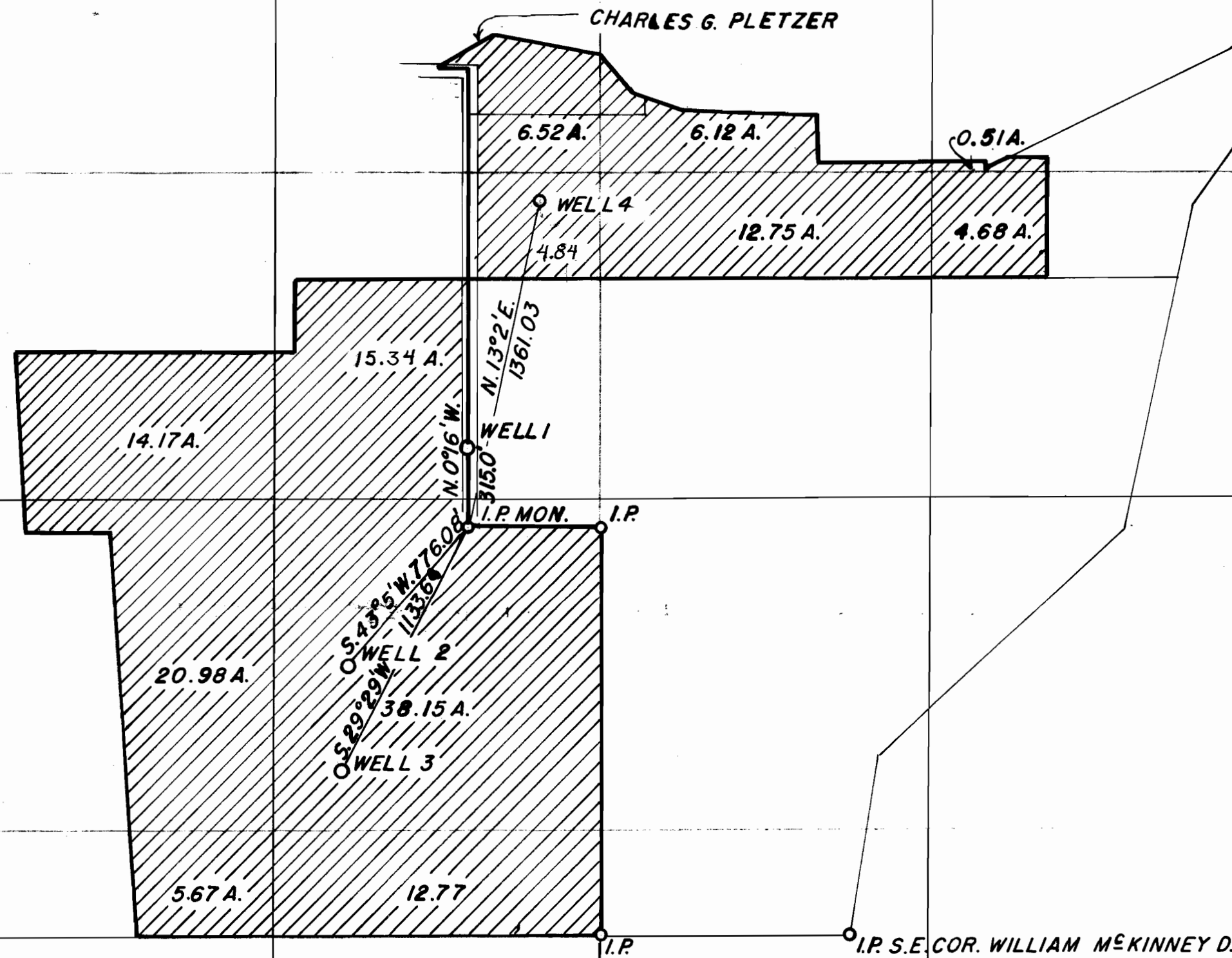
PEARL F. & ERNEST PLETZER
T. 10 S. R. 2 W.

WILLIAM MCKINNEY D.L.C.

5

4

CHARLES G. PLETZER



I, FLOYD L. SIEGMUND OF SALEM ORE. DO HEREBY CERTIFY THAT THIS MAP WAS MADE FROM NOTES TAKEN DURING AN ACTUAL SURVEY MADE BY ME ON 1 APRIL, 1956; THAT THE MONUMENT SHOWN ON THIS MAP CONSISTING OF IRON PIPE 15 N. 41° 57' W. 2223.70' FROM THE S.E. CORNER WILLIAM MCKINNEY D.L.C. IN SEC. 9 T. 10 S. R. 2 W.

Floyd L. Siegmund

Floyd L. Siegmund
FLOYD L. SIEGMUND

8

9

PLAT No. G-347
MAP No. G-226

SCALE: 1 in = 500 ft.