

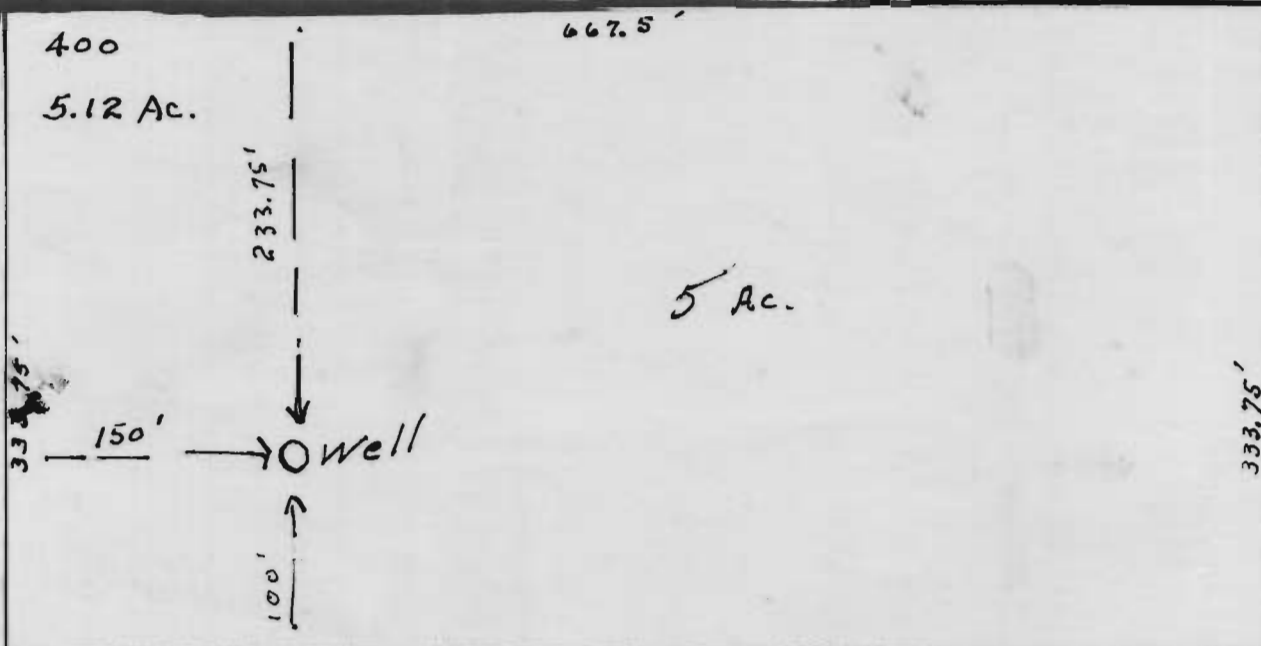
SE 1/4 NE 1/4 SEC 5 T3S R38E WM.

Scale - 1" = 100'

NW Cor.  
SE 1/4 NE 1/4  
Sec 5.

NORTH

1/16 Cor. as  
Established  
by Deeds



60'

333.75'

5 Ac.

RECEIVED  
DEC 2 1962  
STATE ENGINEER  
EVALEN STANSON

Application — G-2474  
Permit No. — G-2286