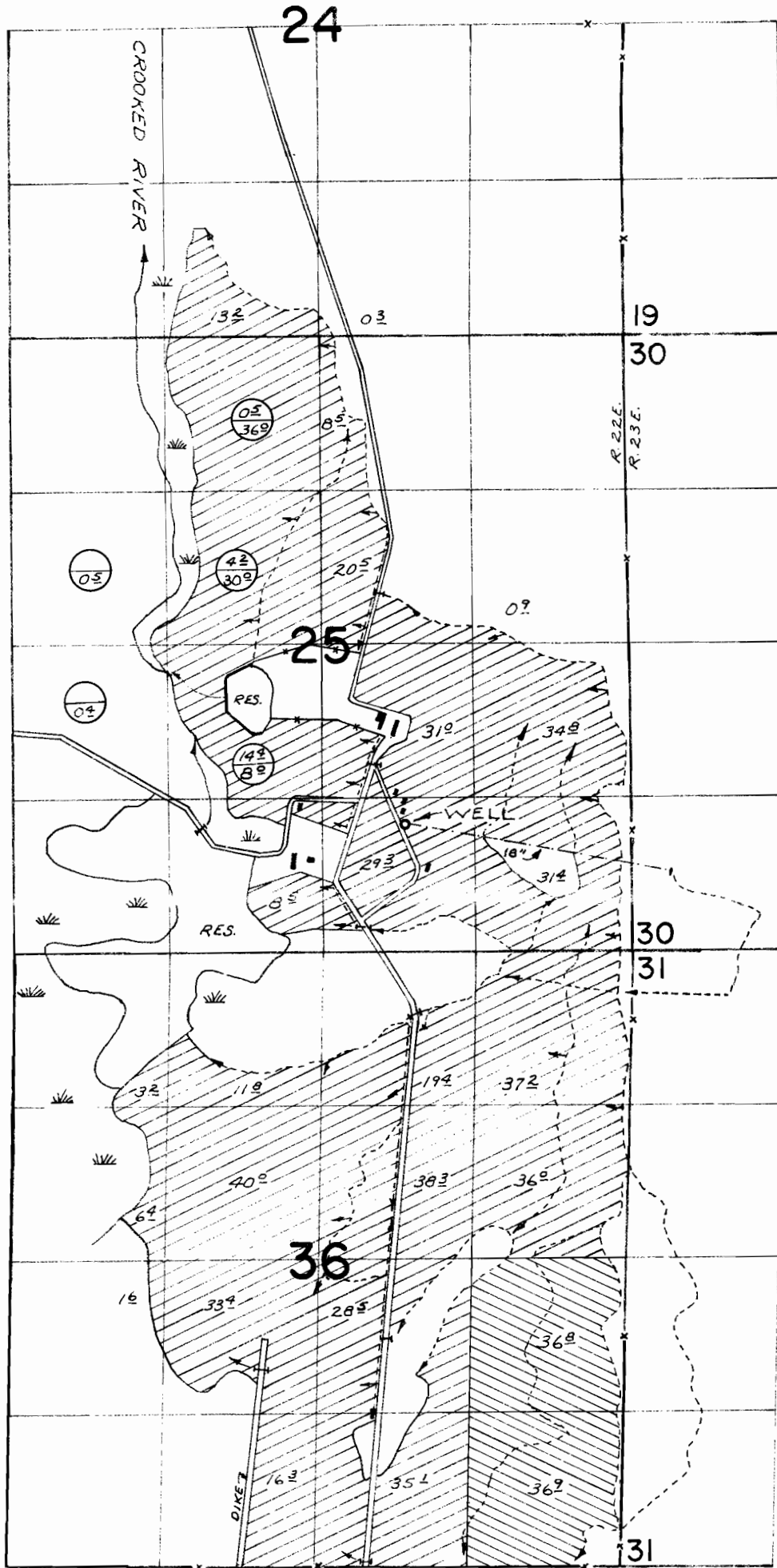


T.20S.R.22&23E.W.M.



⊖ PRIMARY
 ⊕ SUPPLEMENTAL

WELL LOC: 6380' N & 1940' W. FROM S.E. COR. SEC. 31

WATER RIGHTS - CROOKED RIVER

UNDIA

G-5408

G-5208

Plat No. G-2608

Plat No. G-2422



IN NAME OF

G. I. RANCH

SIGNED JULY 11, 1974 BY R. MUCKEN