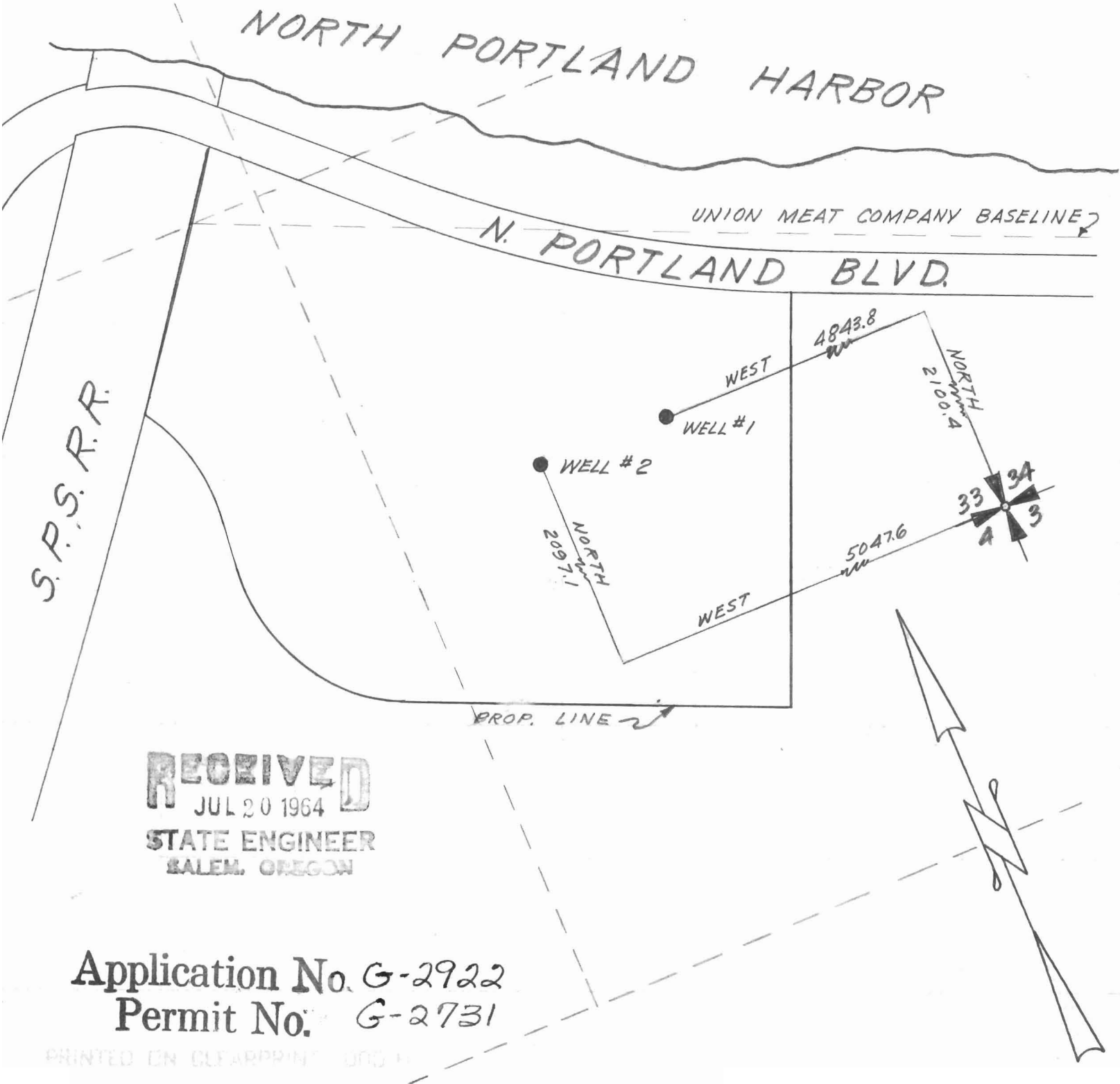


WELL LOCATIONS IN A PORTION OF
THE NW 1/4 OF THE SW 1/4 OF SEC-
TION 33, T.2N., R.1E., WM.

SCALE: 1" = 200'

JULY, 1964.

I.M. GREENWOOD
PROF. LAND SURVEYOR



RECEIVED
JUL 20 1964
STATE ENGINEER
SALEM, OREGON

Application No. G-2922
Permit No. G-2731