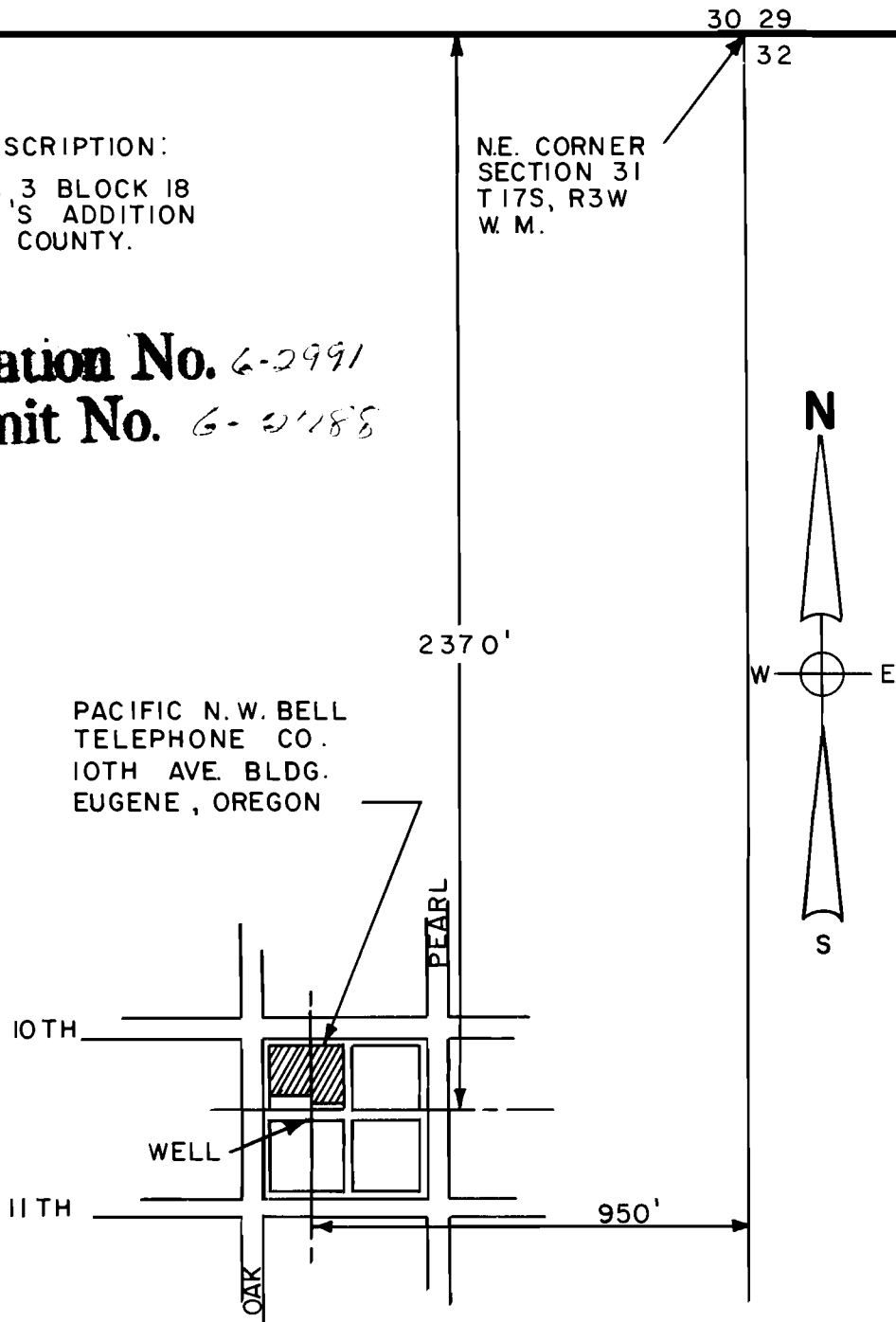


LEGAL DESCRIPTION:
 LOTS 2 & 3 BLOCK 18
 MULLIGAN'S ADDITION
 TO LANE COUNTY.

N.E. CORNER
 SECTION 31
 T17S, R3W
 W. M.

Application No. 6-2991
Permit No. 6-2188



PACIFIC NORTHWEST BELL

OFFICE OF CHIEF ENGINEER
 PORTLAND

SIZE
1S

TENTH AVE. BLDG.

EUGENE, OREGON

ISSUE NO.

WELL LOCATION

DRAFTSMAN
 C. SMART

ENGINEER
E. G. Lemons

SCALE

CHECKER
J. Holmes

APPROVED
[Signature]

12-8-64