

HILLCREST HEIGHTS
 LOCATED IN SECTION 22, T.37S., R.1W.W.M.
 JACKSON COUNTY, OREGON
 SCALE: 1"=100'

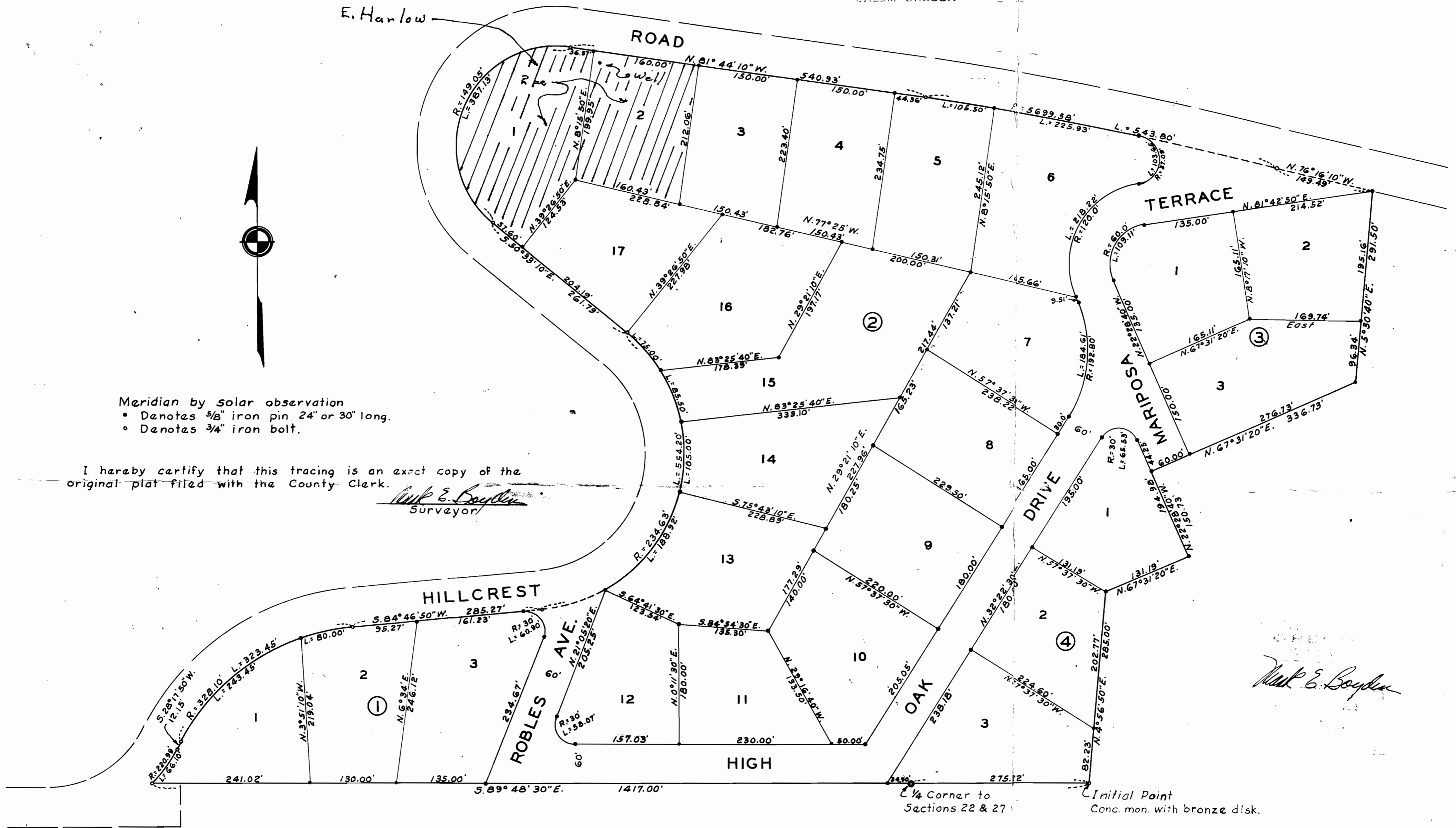
RECEIVED
 MAY 10 1965
 STATE ENGINEER
 BILLY CARSON



Meridian by solar observation
 • Denotes 5/8" iron pin 24" or 30" long.
 • Denotes 3/4" iron bolt.

I hereby certify that this tracing is an exact copy of the original plat filed with the County Clerk.

Mark E. Boyden
 Surveyor



1/4 Corner to Sections 22 & 27

Initial Point
 Conc. mon. with bronze disk.

Mark E. Boyden

Application No. G-3100
Permit No. G-2894