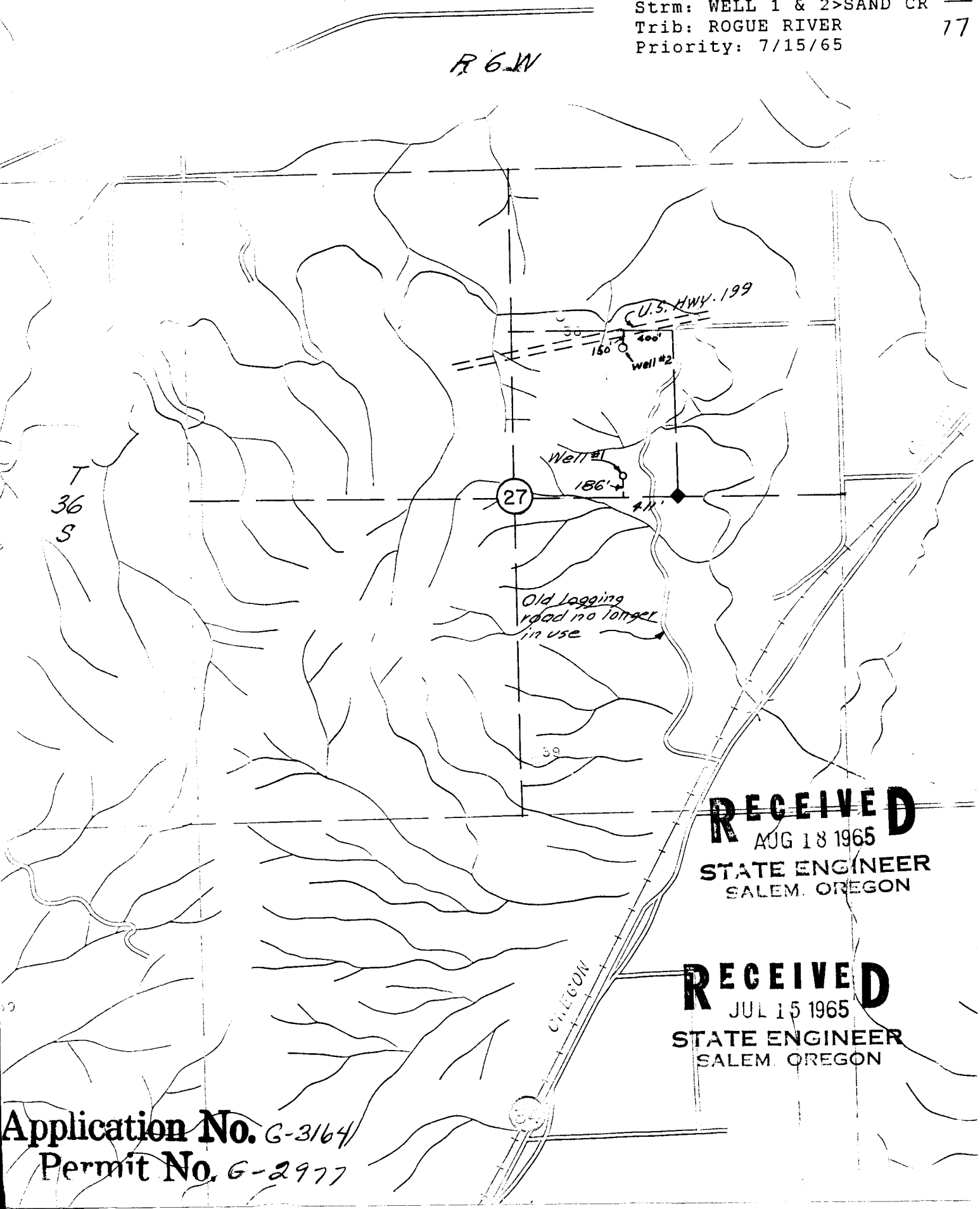


Permit: G 2977
Volume: 1A
Strm: WELL 1 & 2>SAND CR
Trib: ROGUE RIVER
Priority: 7/15/65

7
77

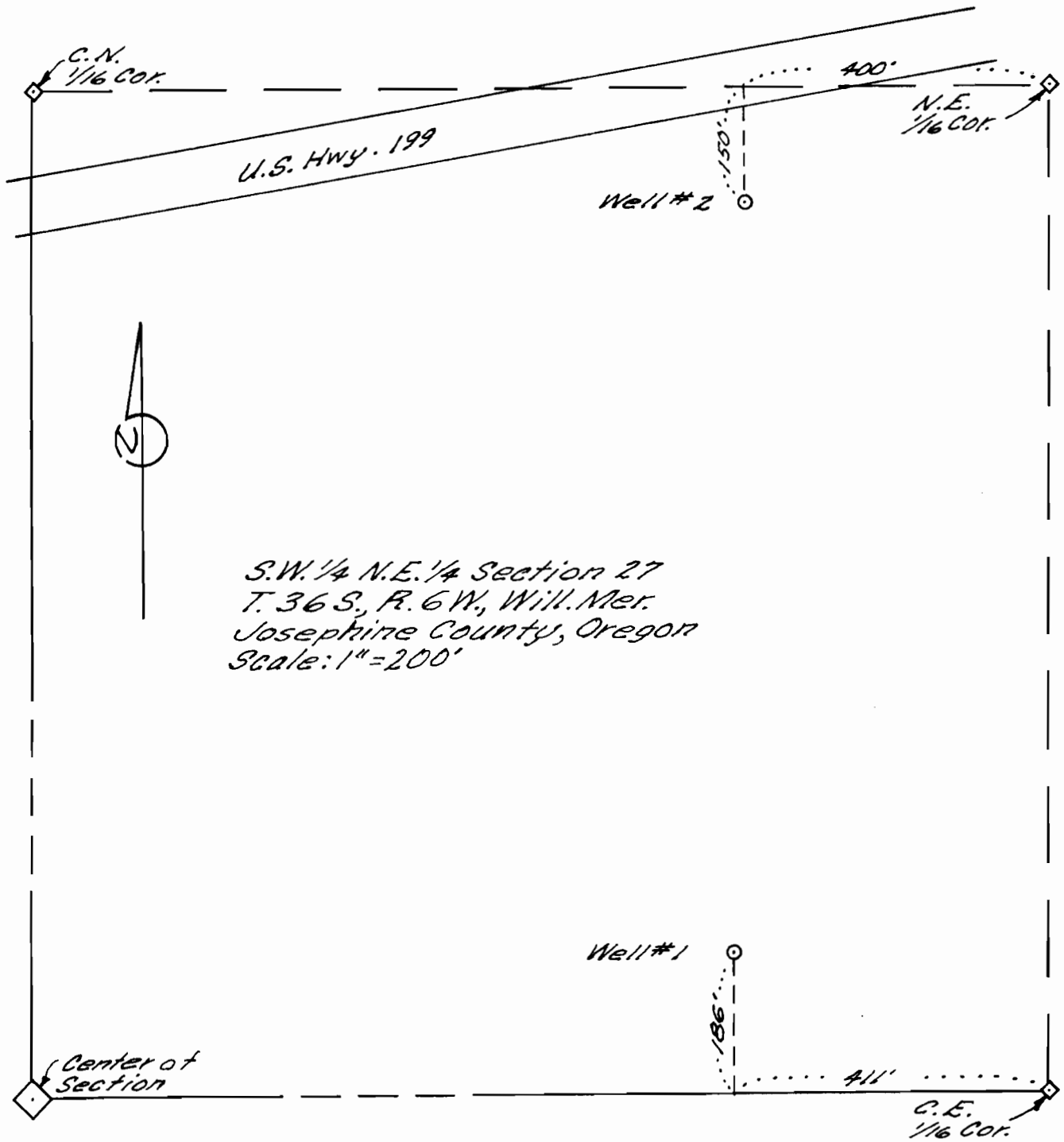
R 6.4V



RECEIVED
AUG 18 1965
STATE ENGINEER
SALEM, OREGON

RECEIVED
JUL 15 1965
STATE ENGINEER
SALEM, OREGON

Application No. G-3164
Permit No. G-2977



S.W. 1/4 N.E. 1/4 Section 27
 T. 36 S., R. 6 W., Will. Mer.
 Josephine County, Oregon
 Scale: 1"=200'

App. No. G-3164
 Permit No. G-2977