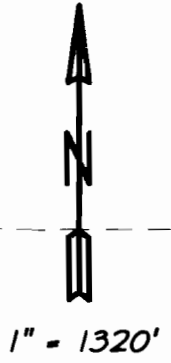


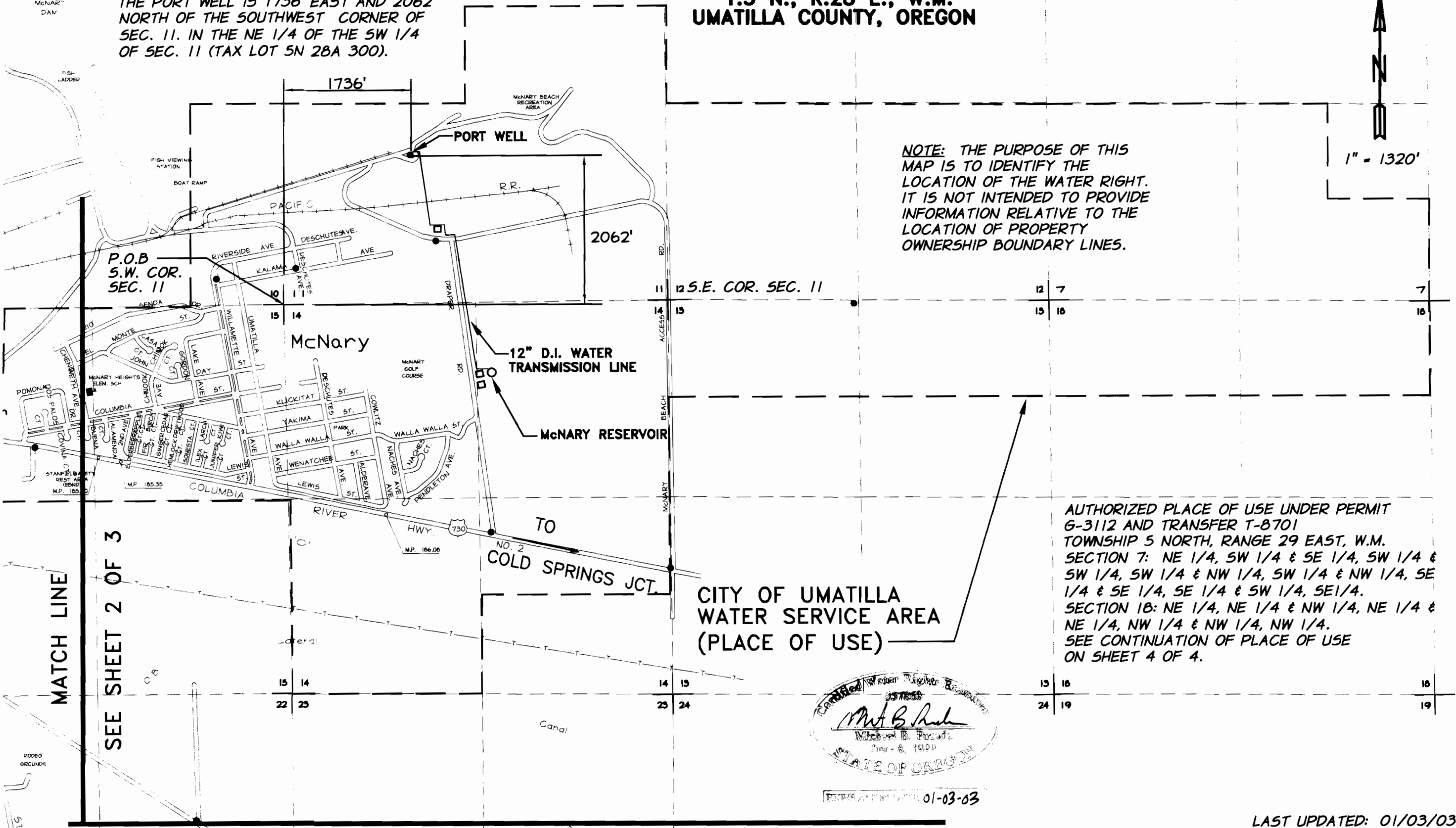
T.5 N., R.28 E., W.M.  
UMATILLA COUNTY, OREGON



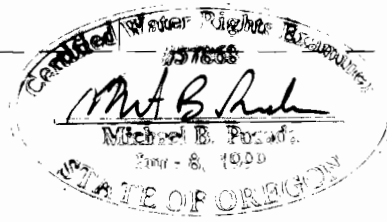
1" = 1320'

THE PORT WELL IS 1736' EAST AND 2062' NORTH OF THE SOUTHWEST CORNER OF SEC. 11. IN THE NE 1/4 OF THE SW 1/4 OF SEC. 11 (TAX LOT 5N 28A 300).

NOTE: THE PURPOSE OF THIS MAP IS TO IDENTIFY THE LOCATION OF THE WATER RIGHT. IT IS NOT INTENDED TO PROVIDE INFORMATION RELATIVE TO THE LOCATION OF PROPERTY OWNERSHIP BOUNDARY LINES.



AUTHORIZED PLACE OF USE UNDER PERMIT G-3112 AND TRANSFER T-8701  
TOWNSHIP 5 NORTH, RANGE 29 EAST, W.M.  
SECTION 7: NE 1/4, SW 1/4 & SE 1/4, SW 1/4 & SW 1/4, SW 1/4 & NW 1/4, SW 1/4 & NW 1/4, SE 1/4 & SE 1/4, SE 1/4 & SW 1/4, SE 1/4.  
SECTION 18: NE 1/4, NE 1/4 & NW 1/4, NE 1/4 & NE 1/4, NW 1/4 & NW 1/4, NW 1/4.  
SEE CONTINUATION OF PLACE OF USE ON SHEET 4 OF 4.



EXPIRES 01-03-03

LAST UPDATED: 01/03/03

MATCH LINE SEE SHEET 3 OF 3

APPLICATION: G-3612  
PERMIT: G-3112 (WITH EXTENSION OF TIME)  
DATE OF SURVEY: AUGUST 2001



CLAIM OF BENEFICIAL USE MAP  
CITY OF UMATILLA  
PORT WELL  
UMATILLA, OREGON

FIGURE  
1 of 4

**T.5 N., R.28 E., W.M.  
UMATILLA COUNTY, OREGON**

**CITY OF UMATILLA  
WATER SERVICE AREA  
(PLACE OF USE)**

APPLICATION: G-3612

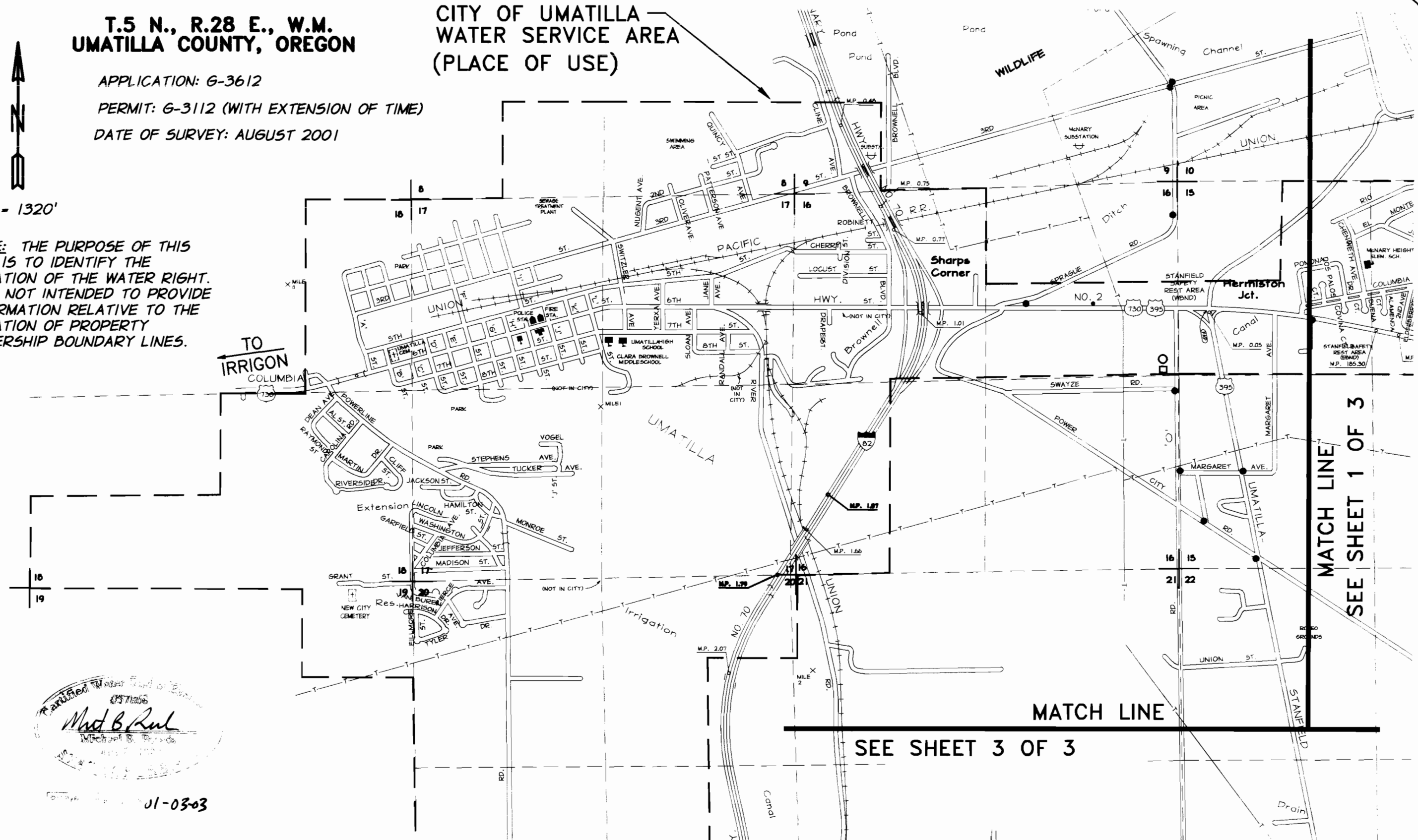
PERMIT: G-3112 (WITH EXTENSION OF TIME)

DATE OF SURVEY: AUGUST 2001



1" = 1320'

**NOTE: THE PURPOSE OF THIS MAP IS TO IDENTIFY THE LOCATION OF THE WATER RIGHT. IT IS NOT INTENDED TO PROVIDE INFORMATION RELATIVE TO THE LOCATION OF PROPERTY OWNERSHIP BOUNDARY LINES.**



TO IRRIGON

MATCH LINE  
SEE SHEET 1 OF 3

MATCH LINE

SEE SHEET 3 OF 3

Professional Water Surveyor  
0571006  
*Michael B. Ruhl*  
Michael B. Ruhl  
01-03-03

LAST UPDATED: 01/03/03

|  |   |                                 |
|--|---|---------------------------------|
|  | <p><b>CLAIM OF BENEFICIAL USE MAP<br/>CITY OF UMATILLA<br/>PORT WELL<br/>UMATILLA, OREGON</b></p> | <p><b>FIGURE<br/>2 of 4</b></p> |
|--|---|---------------------------------|

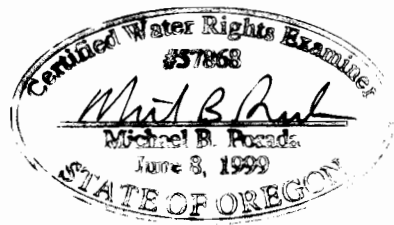
SEE SHEET 2 OF 3

SEE SHEET 1 OF 3

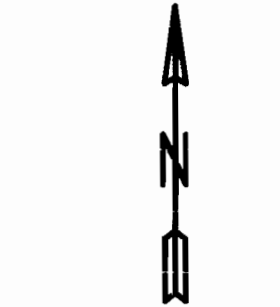
MATCH LINE

### T.5 N., R.28 E., W.M. UMATILLA COUNTY, OREGON

**NOTE:** THE PURPOSE OF THIS MAP IS TO IDENTIFY THE LOCATION OF THE WATER RIGHT. IT IS NOT INTENDED TO PROVIDE INFORMATION RELATIVE TO THE LOCATION OF PROPERTY OWNERSHIP BOUNDARY LINES.



EXPIRATION DATE: 4-03-03



1" = 1320'

LAST UPDATED: 01/03/03

CITY OF UMATILLA  
WATER SERVICE AREA  
(PLACE OF USE)

APPLICATION: G-3612  
PERMIT: G-3112 (WITH EXTENSION OF TIME)  
DATE OF SURVEY: AUGUST 2001



CLAIM OF BENEFICIAL USE MAP  
CITY OF UMATILLA  
PORT WELL  
UMATILLA, OREGON

FIGURE  
3 of 4

T.5 N., R.28 E., W.M.  
UMATILLA COUNTY, OREGON

APPLICATION: G-3612

PERMIT: G-3112 (WITH EXTENSION OF TIME)

DATE OF SURVEY: AUGUST 2001

(CONTINUED)

AUTHORIZED PLACE OF USE UNDER PERMIT G-3112 AND TRANSFER T-8701  
TOWNSHIP 5 NORTH, RANGE 28 EAST, W.M.

SECTION 8: SE 1/4, SW 1/4 & SE 1/4, SE 1/4 & SW 1/4, SE 1/4.

SECTION 9: SW 1/4, SW 1/4.

SECTION 10: NE 1/4, SE 1/4 & SE 1/4, SE 1/4.

SECTION 11: SW 1/4, NE 1/4 & SE 1/4, NE 1/4 & NE 1/4, SE 1/4 & NW 1/4, SE 1/4 & SE 1/4, SE 1/4 & SW 1/4, SE 1/4 & NE 1/4, SW 1/4 & NW 1/4, SW 1/4 & SE 1/4, SW 1/4 & SW 1/4, SW 1/4.

SECTION 12: NE 1/4, SE 1/4 & NW 1/4, SE 1/4 & SE 1/4, SE 1/4 & SW 1/4, SE 1/4 & NE 1/4, SW 1/4 & NW 1/4, SW 1/4 & SE 1/4, SW 1/4 & SW 1/4, SW 1/4.

SECTION 13: NE 1/4, NE 1/4 & NW 1/4, NE 1/4 & NE 1/4, NW 1/4 & NW 1/4, NW 1/4

SECTION 14: NE 1/4, NE 1/4 & NW 1/4, NE 1/4 & SE 1/4, NE 1/4 & SW 1/4, NE 1/4 & NE 1/4, NW 1/4, SE 1/4, NW 1/4 & NW 1/4, NW 1/4 & SW 1/4, NW 1/4 & NE 1/4, SW 1/4 & SE 1/4, SW 1/4 & SW 1/4, SW 1/4 & NW 1/4, SW 1/4 & NE 1/4, SE 1/4 & NW 1/4, SE 1/4.

SECTION 15: NE 1/4, NE 1/4 & SE 1/4, NE 1/4 & NW 1/4, NE 1/4 & SW 1/4, NE 1/4 & NE 1/4, NW 1/4 & SE 1/4, NW 1/4 & SW 1/4, NW 1/4.

SECTION 16: SE 1/4, NE 1/4 & SW 1/4, NE 1/4 & NE 1/4, NW 1/4 & SE 1/4, NW 1/4 & NW 1/4, NW 1/4 & SW 1/4, NW 1/4 & NW 1/4, SW 1/4 & SW 1/4, SW 1/4.

SECTION 17: NE 1/4, NE 1/4 & NW 1/4, NE 1/4 & NE 1/4, NW 1/4 & NW 1/4, NW 1/4 & SW 1/4, NW 1/4 & SE 1/4, NW 1/4 & SW 1/4, NE 1/4 & SE 1/4, NE 1/4 & NE 1/4, SE 1/4 & NW 1/4, SE 1/4, NE 1/4, SW 1/4 & NW 1/4, SW 1/4 & SE 1/4, SW 1/4 & SW 1/4, SW 1/4.

SECTION 18: NE 1/4, NE 1/4 & SE 1/4, NE 1/4 & NE 1/4, SE 1/4 & NW 1/4, SE 1/4 & SE 1/4, SE 1/4 & SW 1/4, SE 1/4 & SE 1/4, SW 1/4 & SW 1/4, SW 1/4.

SECTION 19: NE 1/4, NE 1/4

SECTION 20: NE 1/4, NE 1/4 & NW 1/4, NE 1/4 & SW 1/4, NE 1/4 & NE 1/4, NW 1/4 & NW 1/4, NW 1/4 & SE 1/4, NW 1/4 & SW 1/4, NW 1/4 & NW 1/4, SE 1/4 & SW 1/4, SE 1/4 & NE 1/4, SW 1/4 & NW 1/4, SW 1/4 & SE 1/4, SW 1/4 & SW 1/4, SW 1/4.

SECTION 29: NW 1/4, NE 1/4 & SW 1/4, NE 1/4 & NE 1/4, NW 1/4 & SE 1/4, NW 1/4.



LAST UPDATED: 01/03/03

 anderson  
perry  
associates, inc.

CLAIM OF BENEFICIAL USE MAP  
CITY OF UMATILLA  
PORT WELL  
UMATILLA, OREGON

FIGURE  
4 of 4