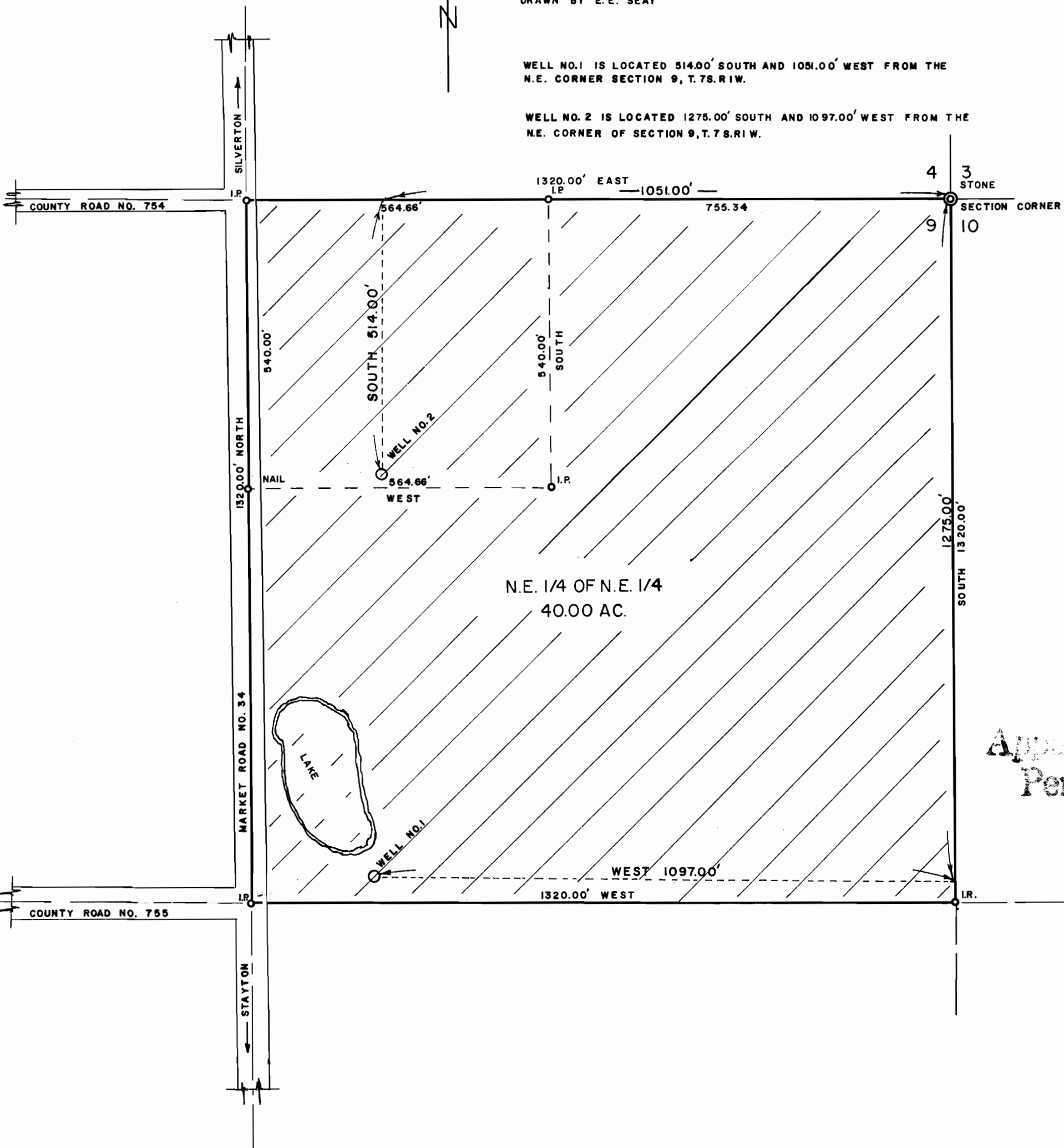


IRRIGATION MAP
 FOR
 RUDOLPH STADELI
 SECTION 9, T.7S.,R1W.W.M.
 MARION COUNTY, OREGON

MAP DRAWN FROM RECORDS
 SCALE = 1" = 200'
 AUGUST 6, 1966
 DRAWN BY E. E. SEAY

WELL NO. 1 IS LOCATED 514.00' SOUTH AND 1051.00' WEST FROM THE
 N.E. CORNER SECTION 9, T.7S.R1W.

WELL NO. 2 IS LOCATED 1275.00' SOUTH AND 1097.00' WEST FROM THE
 N.E. CORNER OF SECTION 9, T.7S.R1W.



Approved
 Permit No. G-3627
 G-3410