

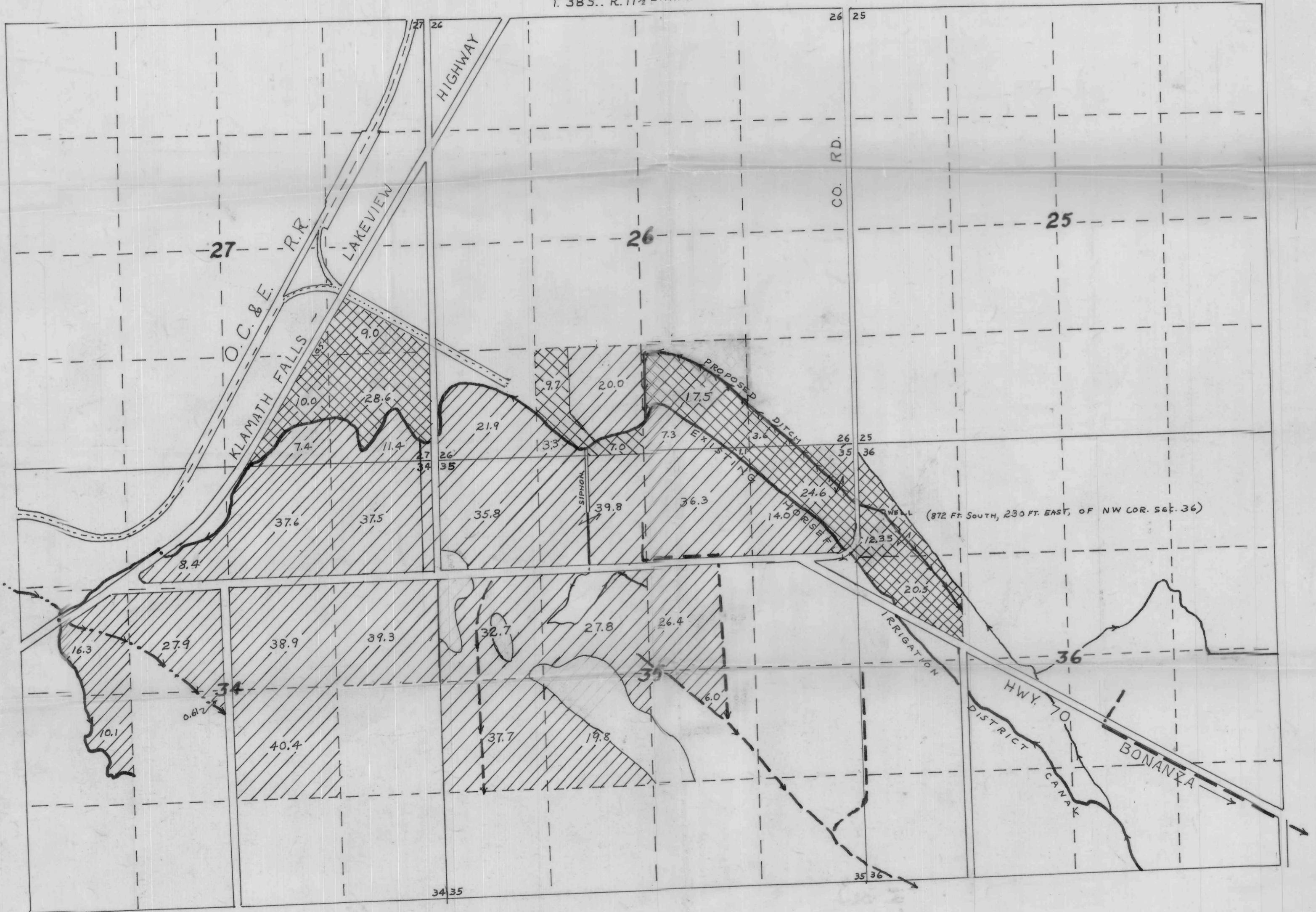
MAP OF PORTION OF HORSEFLY IRRIGATION DISTRICT
 TO BE IRRIGATED FROM WELL IN
 NWNW OF SECTION 36, T.38S., R.11½ E.W.M.

RECEIVED
 APR 26 1967
 STATE ENGINEER
 SALEM OREGON

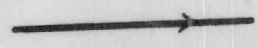
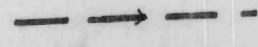
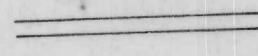
Application No. G-3906
 Permit No. G-3670

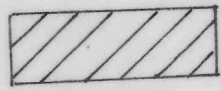


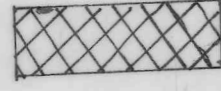
T.38S., R.11½ E.W.M.



LEGEND

IRR. DITCH 
 DRAIN 
 ROADS 

LAND SERVED BY HORSEFLY IRR. DIST.
 TO BE SUPPLEMENTED FROM WELL. 

LAND NOT PRESENTLY SERVED
 BY HORSEFLY IRR. DISTRICT
 TO BE IRRIGATED BY PRIMARY
 WATER RIGHT FROM WELL. 

SCALE: 1" = 1,000'

RECEIVED
 JUN 19 1967
 STATE ENGINEER
 SALEM OREGON