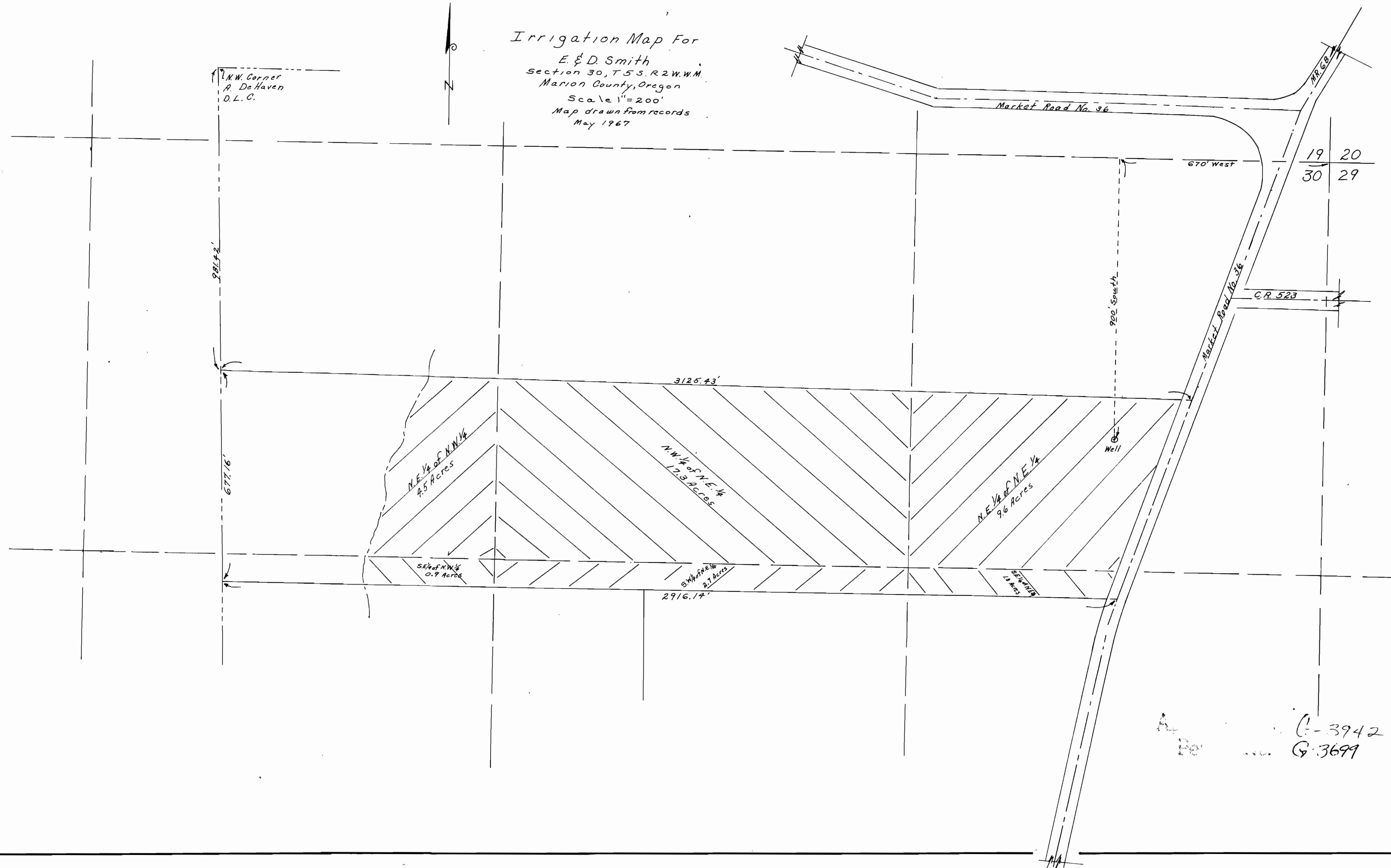


Irrigation Map For
 E. & D. Smith
 Section 30, T5S, R2W, W.M.
 Marion County, Oregon
 Scale 1"=200'
 Map drawn from records
 May 1967

N.W. Corner
 P. De Haven
 D.L.C.



19 20
 30 29

C.R. 523

Well

G-3942
 G-3699