

S W 1/4 Sec. 23 T.17 S. R.4 W.W.M.  
LANE COUNTY

1" = 200'

RECEIVED  
STATE ENGINEER  
OREGON

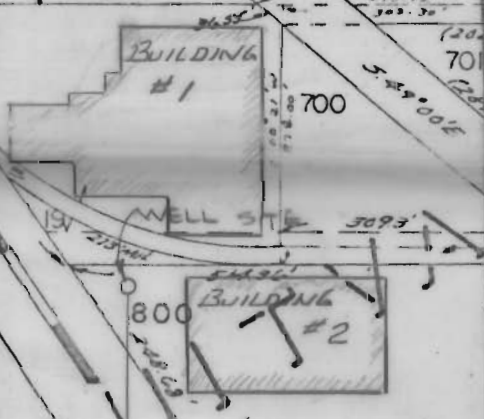
See Map .17 04 23 2

TAX LOTTED  
ON MAP  
17 04 23 2

Operating R.R. Property

052-0

RELOCATED COUNTY OREGON



BETHEL ROAD

ALLANE AVE.

NW 1/4 SW 1/4

HIGHWAY

052-12

ELECTRIC

SEE MAP 17 04 23 3 4

Application No. G-4007  
Permit No. G-3759

RECEIVED  
STATE ENGINEER  
OREGON

945' EAST  
SW COR. SEC. 23  
T.17 S. R.4 W. W.M.

See Map

17 04 23 3 3

NW Cor.

2100