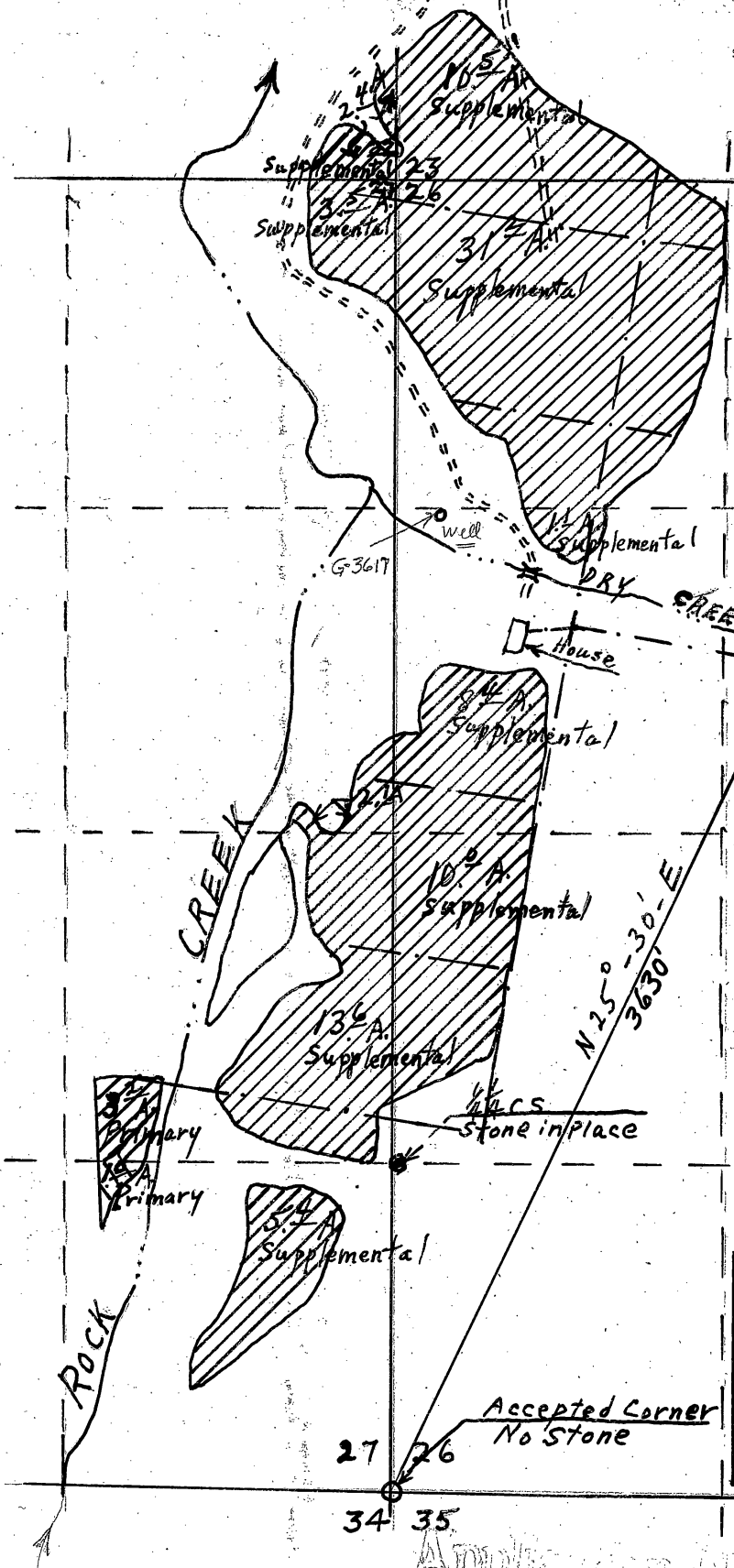


R-22-E WM

T
2
S

RECEIVED
MAY 10 1967
PLANT ENGINEER
GILLIAM COUNTY
OFFICE



LAND
T-2-S, R-22-E WM

SEC 22 -
SE 1/4 SE 1/4 - 2.4 Supple.

SEC 23 -
SW 1/4 SW 1/4 - 10.5 Supple.

SEC 26 -
NW 1/4 NW 1/4 - 31.2 Supple.
SW 1/4 NW 1/4 - 9.5 Supple.
NW 1/4 SW 1/4 - 10.0 Supple.

SEC 27 -
NE 1/4 NE 1/4 - 3.5 Supple.
SE 1/4 NE 1/4 - 2.1 Supple.
NE 1/4 SE 1/4 - 13.6 Supple.
NE 1/4 SE 1/4 - 3.2 Primary
SE 1/4 SE 1/4 - 1.0 Primary
SE 1/4 SE 1/4 - 5.4 Supple.

Total 92.4 Acres

WATER APPLICATION MAP
 HARVEY SMITH-OWNER, IONE OREGON
 ALL LAND IN GILLIAM COUNTY OREGON
 MAP PREPARED FROM FIELD
 SURVEY DATA TAKEN BY THE
 SOIL CONSERVATION SERVICE
 NOTES ON FILE IN CONDON OFFICE

Application No. G-4029
 Permit No. G-3780