

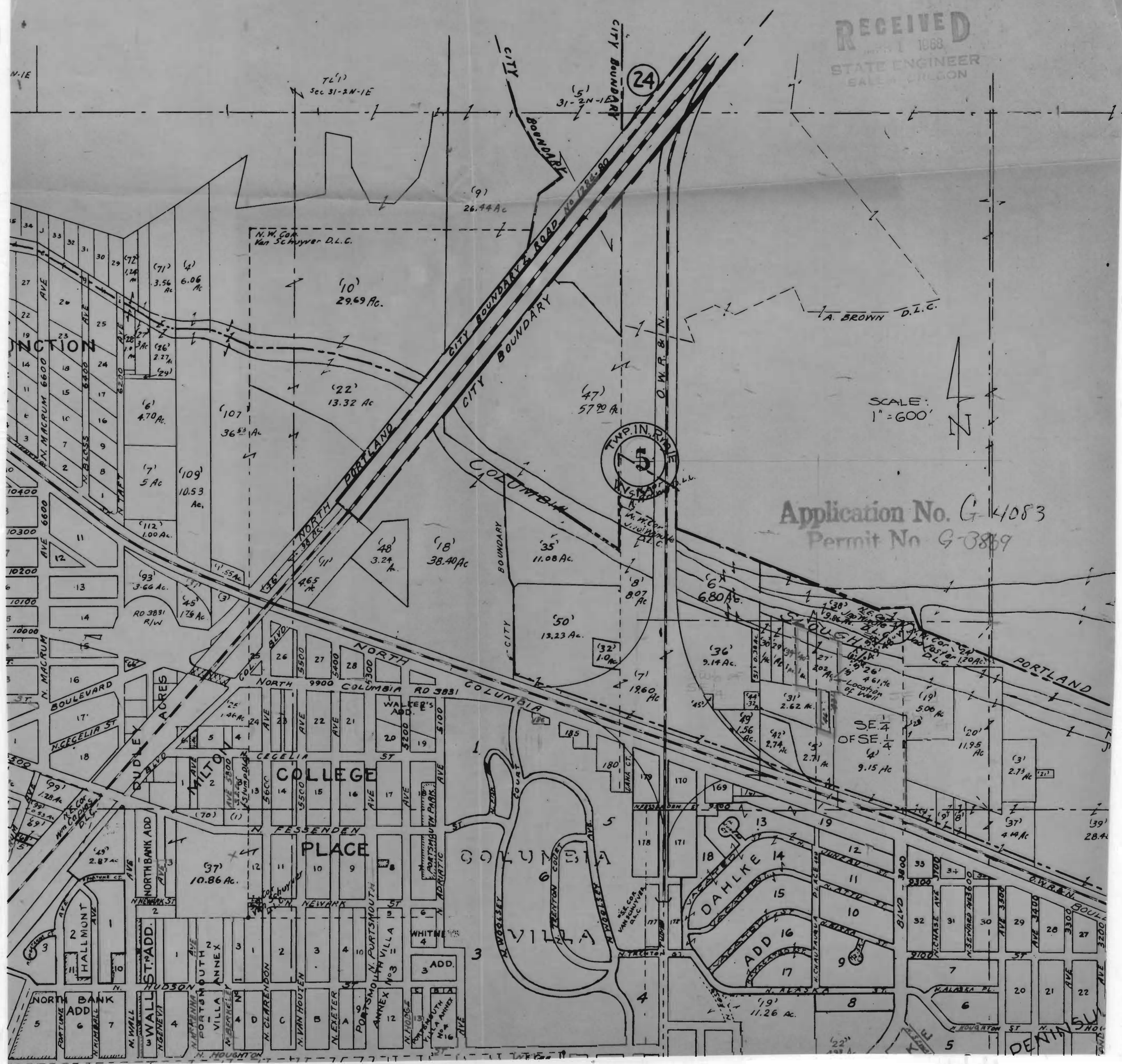
RECEIVED  
MAY 1 1968  
STATE ENGINEER  
SALEM OREGON

(24)

TWP. 5  
R. 1

SCALE:  
1" = 600'

Application No. G-4083  
Permit No. G-3869



TL(1)  
Sec 31-2N-1E

(5)  
31-2N-1E

(9)  
26.44 Ac.

(71)  
3.56 Ac.

(4)  
6.06 Ac.

(10)  
29.69 Ac.

N. W. Cor.  
Van Schuyver D.L.C.

A. BROWN D.L.C.

(22)  
13.32 Ac.

(107)  
36.52 Ac.

(47)  
57.90 Ac.

(7)  
5 Ac.

(109)  
10.53 Ac.

(112)  
1.00 Ac.

(93)  
3.66 Ac.

(45)  
176 Ac.

(48)  
3.24 Ac.

(18)  
38.40 Ac.

(35)  
11.08 Ac.

(50)  
13.23 Ac.

(27)  
5400

(28)  
5400

(29)  
5300

COLLEGE PLACE

COLUMBIA VILLA

DAHLKE

ADD 16

(19)  
11.26 Ac.

(37)  
10.86 Ac.

SE 1/4  
OF SE 1/4  
(4)  
9.15 Ac.

(19)  
500 Ac.

(20)  
11.95 Ac.

(31)  
2.73 Ac.

(37)  
4.44 Ac.

(39)  
28.4

(5)  
NORTH BANK ADD

(4)  
WALL

(3)  
HUBSON

(2)  
N. CLARENDON

(1)  
N. VAN HOUTEN

(1)  
N. EXETER

(1)  
PORTSMOUTH ANNEX No. 3

(1)  
N. HOUGHTON

(1)  
N. CLARENDON

(1)  
N. VAN HOUTEN

(1)  
N. EXETER

(1)  
PORTSMOUTH ANNEX No. 4

(1)  
N. HOUGHTON