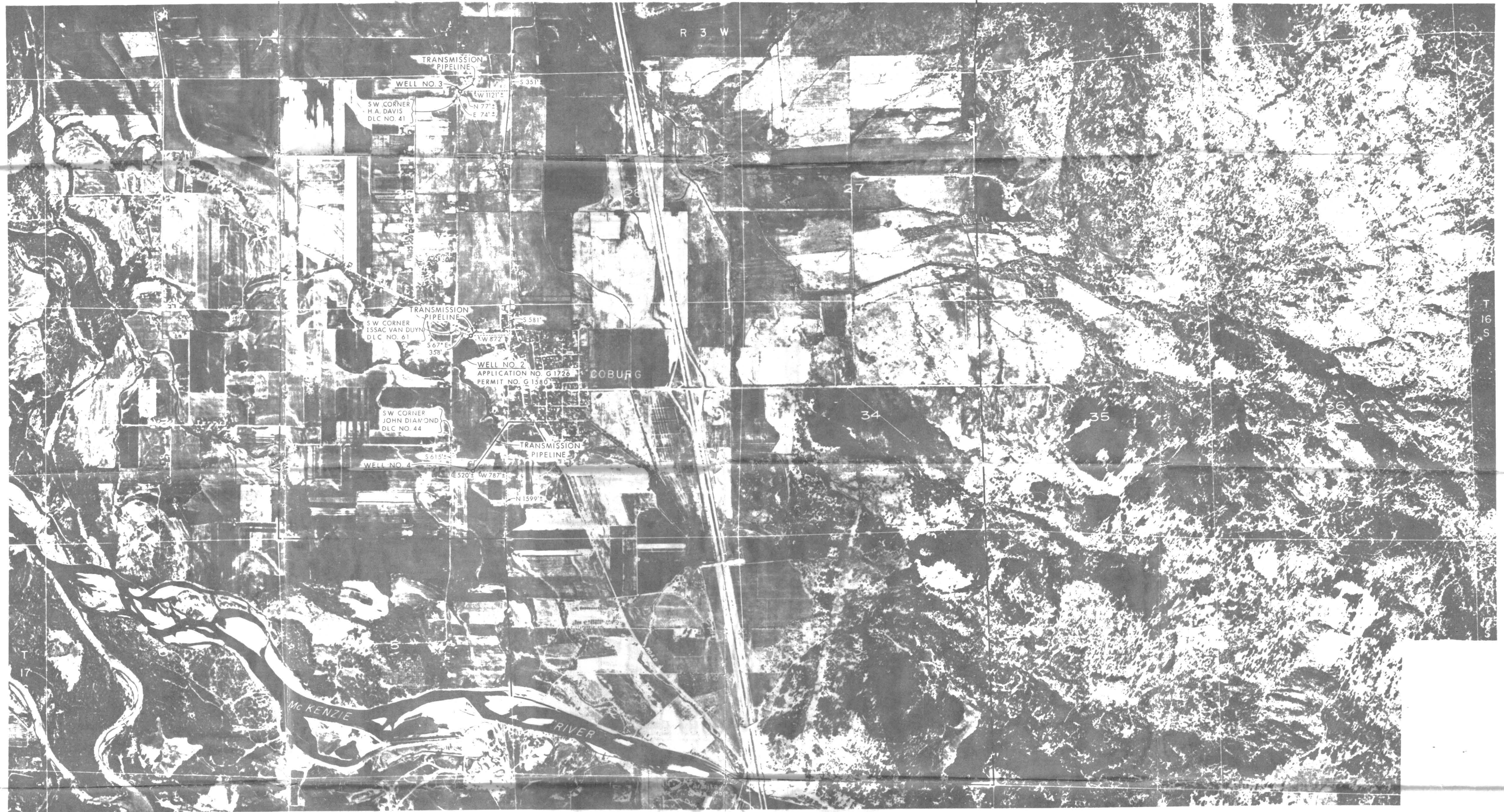


RECEIVED  
 JUN 18 1966  
 STATE ENGINEER  
 SALEM, OREGON

ANTICIPATED LIMITS OF FUTURE  
 WATER SERVICE AREA. (SECTIONS  
 3 & 4 IN T17S, R3W, W.M. AND  
 SECTIONS 20, 21, 22, 27, 28, 29, 32, 33,  
 & 34 IN T16S, R3W, W.M.)



Application No. G-4283 & G-4284  
 Permit No. G-4032 & G-4033

NO.	INCHES	DATE	REVISION	DRAWN BY J.E.W. CHECKED BY C.A. APPROVED BY J.E.W.	CITY OF COBURG WATER RIGHT APPLICATION MAP CORNELL, HOWLAND, HAYES & MERRYFIELD ENGINEERS SEATTLE CORVALLIS BOISE	SHEET 1 OF 1 DWG NO. G 3555-2
-----	--------	------	----------	---	---	----------------------------------