

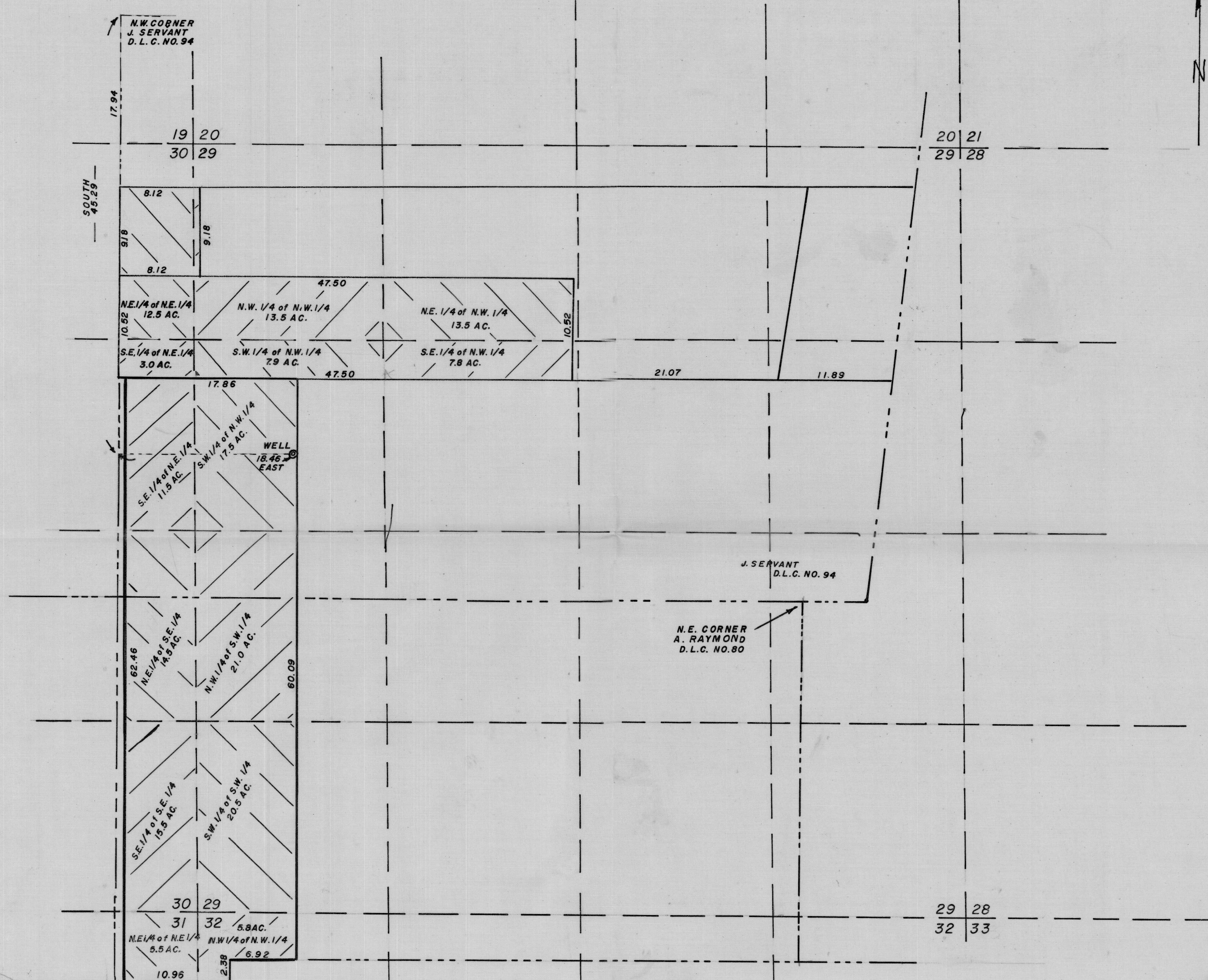
IRRIGATION MAP FOR RAYMOND DAVIDSON

Sections 29, 30, 31 and 32 T. 4 S. R 2 W. W.M.

Marion County, Oregon
MAP DRAWN BY E.E. SEAY

Date April 9, 1968
MAP DRAWN FROM RECORDS

Scale = 1" = 10 chains



Application No. G-4330
Permit No. G-4085