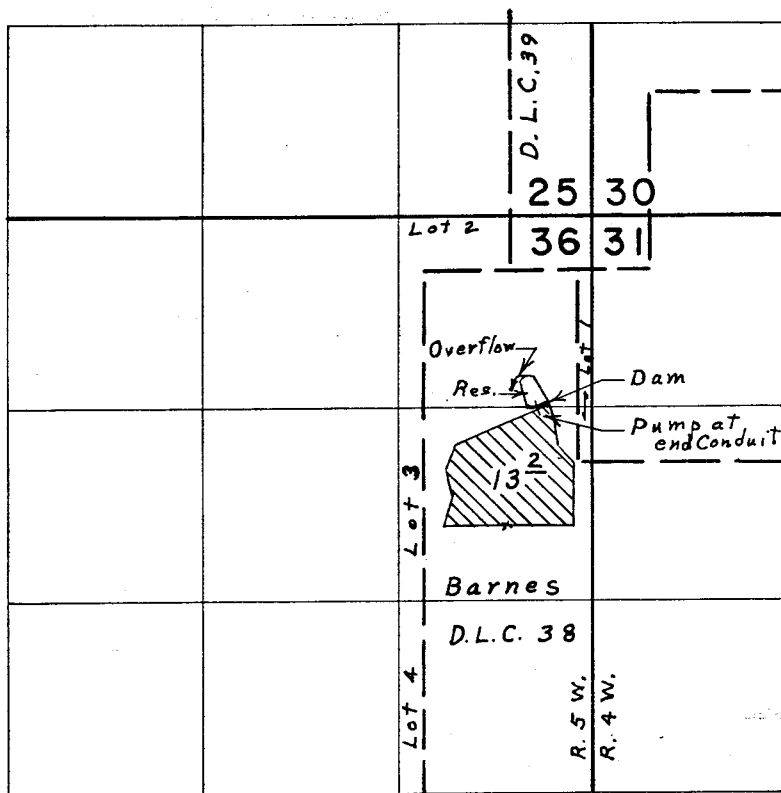


T.37S. R.4 & 5 W. W.M.



Sump loc. 1200' S. & 400' W. from N. E. Corner Section 36

RECEIVED

JUN 5 1978

WM. DIST. 14
GRANTS PASS 21

FINAL PROOF SURVEY UNDER

Application No. G-4571 Permit No. G-4295
IN NAME OF

ROY M. DUNN

Surveyed May 17, 1975, by L. E. Gould