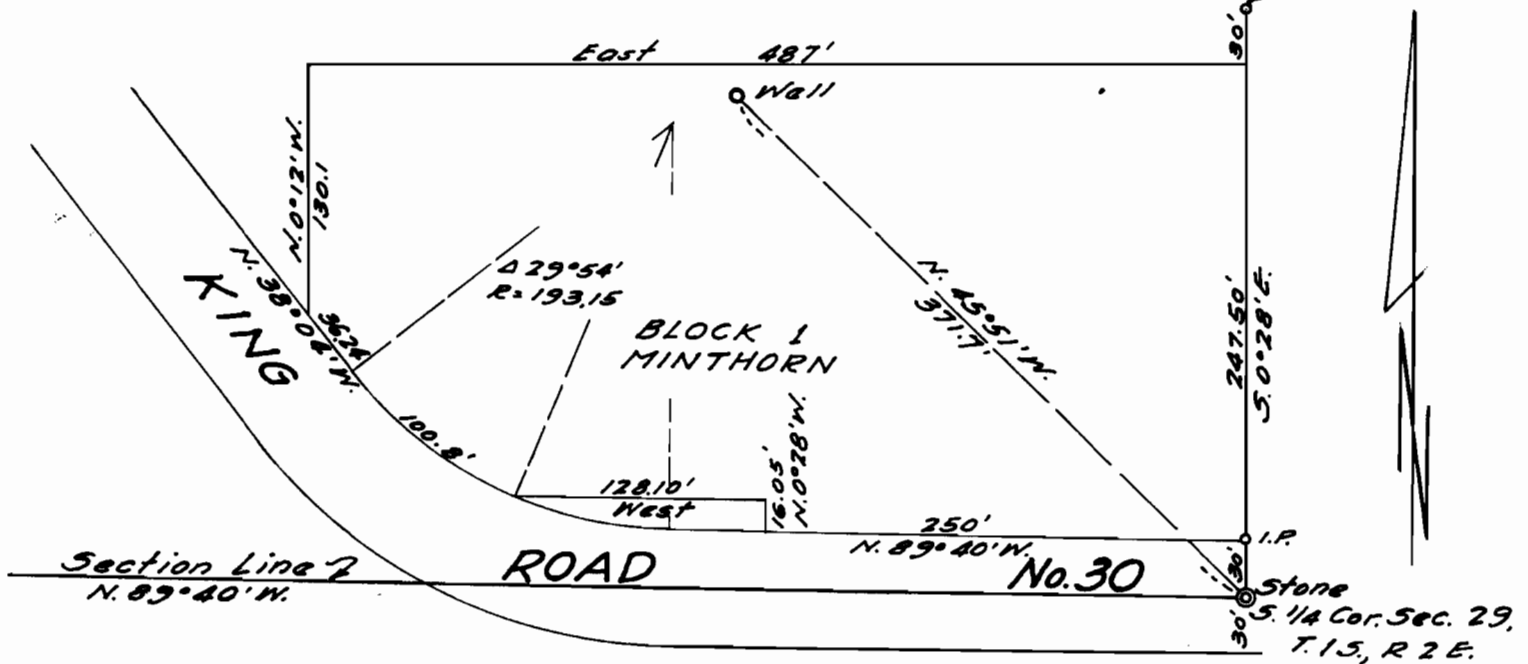


N. E. Cor. Daniel Hathaway  
D.L.C. # 40



Scale: 1" = 100'

I, HAROLD C. BOOTH of BOOTH & WRIGHT, Surveyors, do hereby certify that this map was made from notes taken during an actual survey made by me on January 9, 1957; that the monument shown on this map is the 1/4 Corner common to Sections 29 & 32, T. 15., R. 2 E., N.M.

*Harold C. Booth*

Reg. Prof. Land Surveyor of Ore. # 80

Application No. G-542  
Permit No. G-449