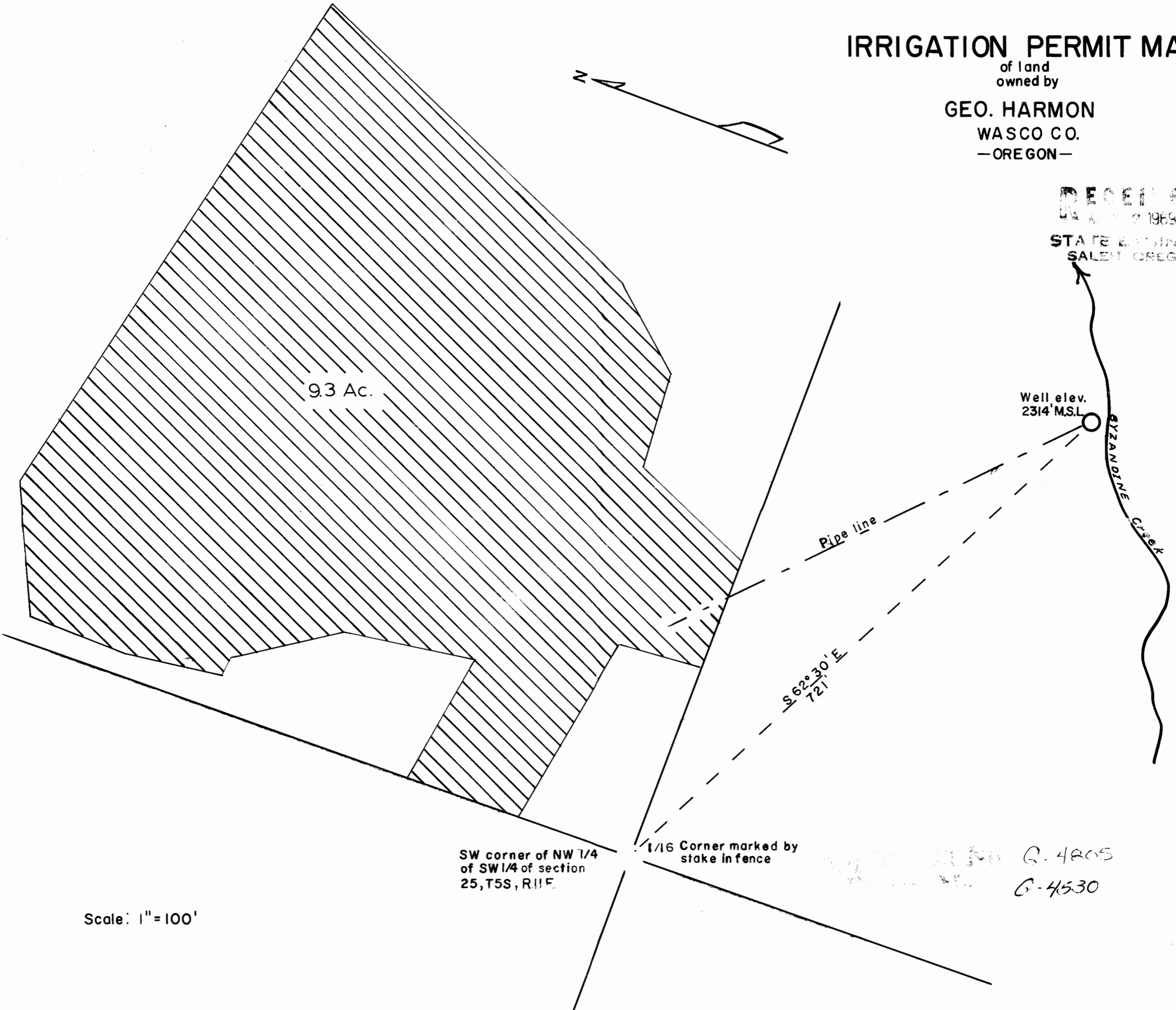
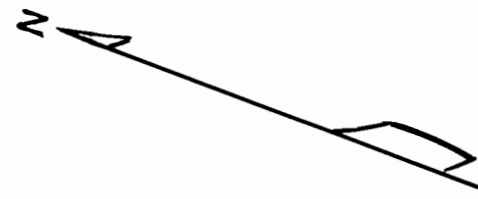


IRRIGATION PERMIT MAP

of land
owned by

GEO. HARMON
WASCO CO.
—OREGON—

RECEIVED
MAY 2 1968
STATE ENGINEER
SALEM, OREGON



9.3 Ac.

Well elev.
2314' M.S.L.

Pipe line

S 62° 30' E
721'

BYZANDINE
CREEK

SW corner of NW 1/4
of SW 1/4 of section
25, T5S, R11E.

1/16 Corner marked by
stake in fence

G-4805
G-4530

Scale: 1" = 100'