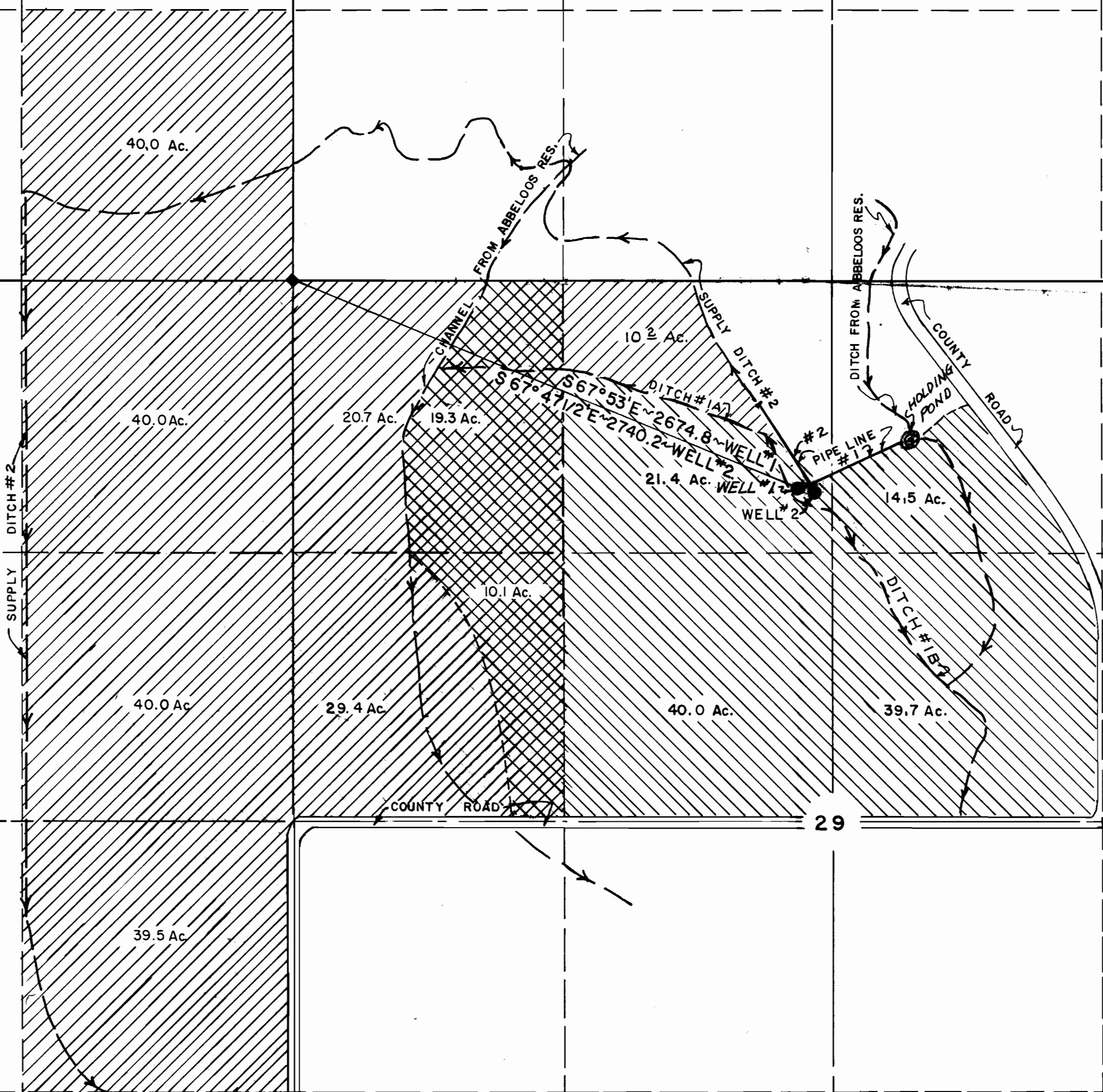





19

20

30

29



-  IRRIGATED FROM WELL #2 SUPPLEMENTAL TO ABBELOS RESERVOIR.
-  PRIMARY IRRIGATION FROM WELL #2.
-  IRRIGATED FROM WELL #1 SUPPLEMENTAL TO ABBELOS RESERVOIR.

Application No. 2-4819
 Permit No. G 4539

RECEIVED
 MAY 26 1969
 STATE ENGINEER
 SALEM, OREGON

RECEIVED
 MAY 19 1969
 STATE ENGINEER
 SALEM, OREGON

T. 39 S., R. 13 E., W. M.



MAP SHOWING LANDS TO BE IRRIGATED FROM WELLS BY HARRY R. WAGGONER & LUTHER R. NOBLE IN SECTIONS 19, 29, & 30, T. 39 S., R. 13 E., W. M. KLAMATH COUNTY OREGON SCALE: 1" = 500' MAP & SURVEY BY WILLIAM L. WALES JR. CONSULTING ENGINEER DECEMBER 1968 KLAMATH FALLS, OREGON