

15 | 14
22 | 23

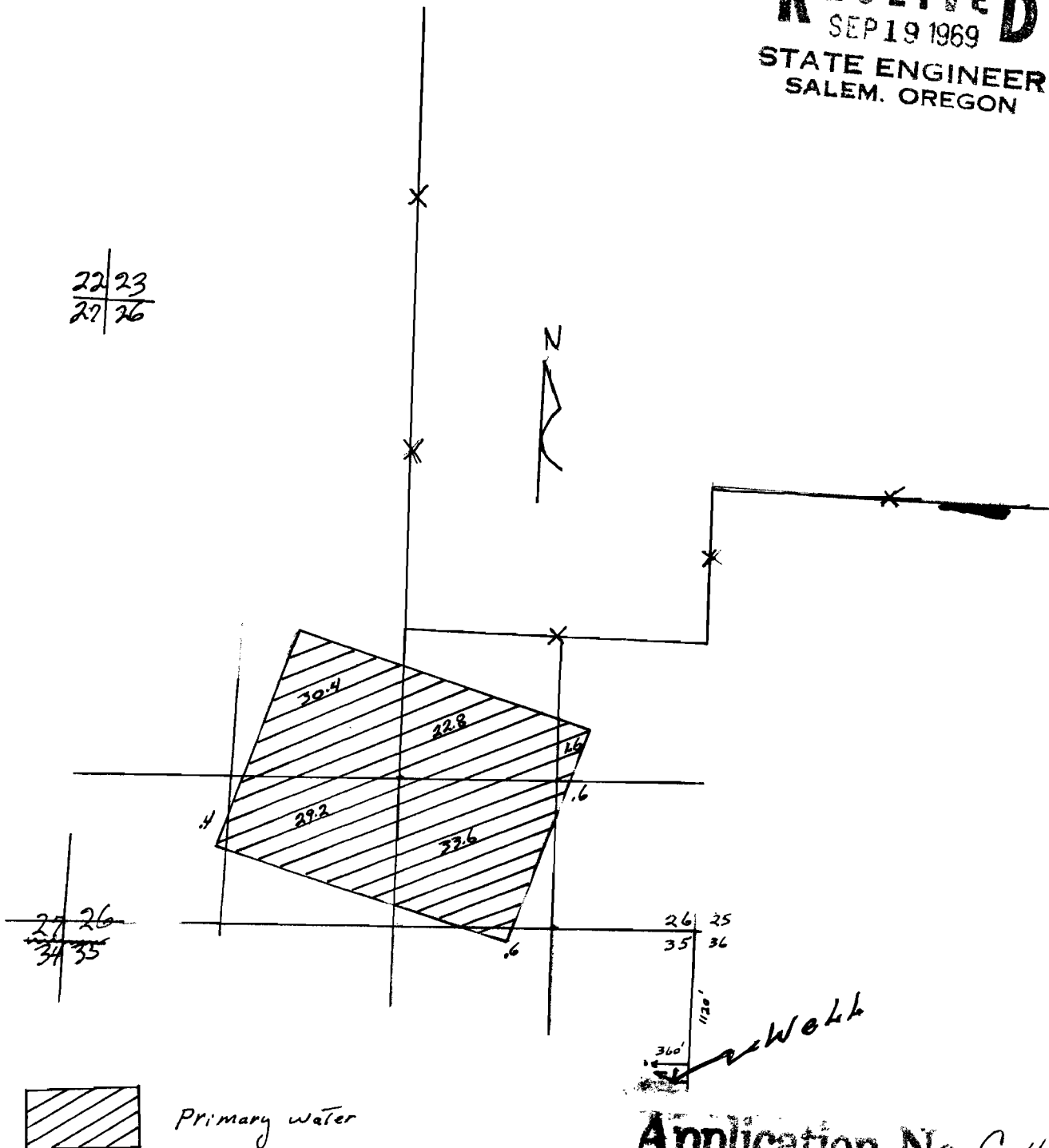
Darrell Padberg
Scale 4" = 1 mile
T. 15.
R. 24 E.


RECEIVED
MAY 15 1969

STATE ENGINEER
SALEM, OREGON

RECEIVED
SEP 19 1969
STATE ENGINEER
SALEM, OREGON

22 | 23
27 | 26



 Primary water

Application No. G 4877
Permit No. G 4592