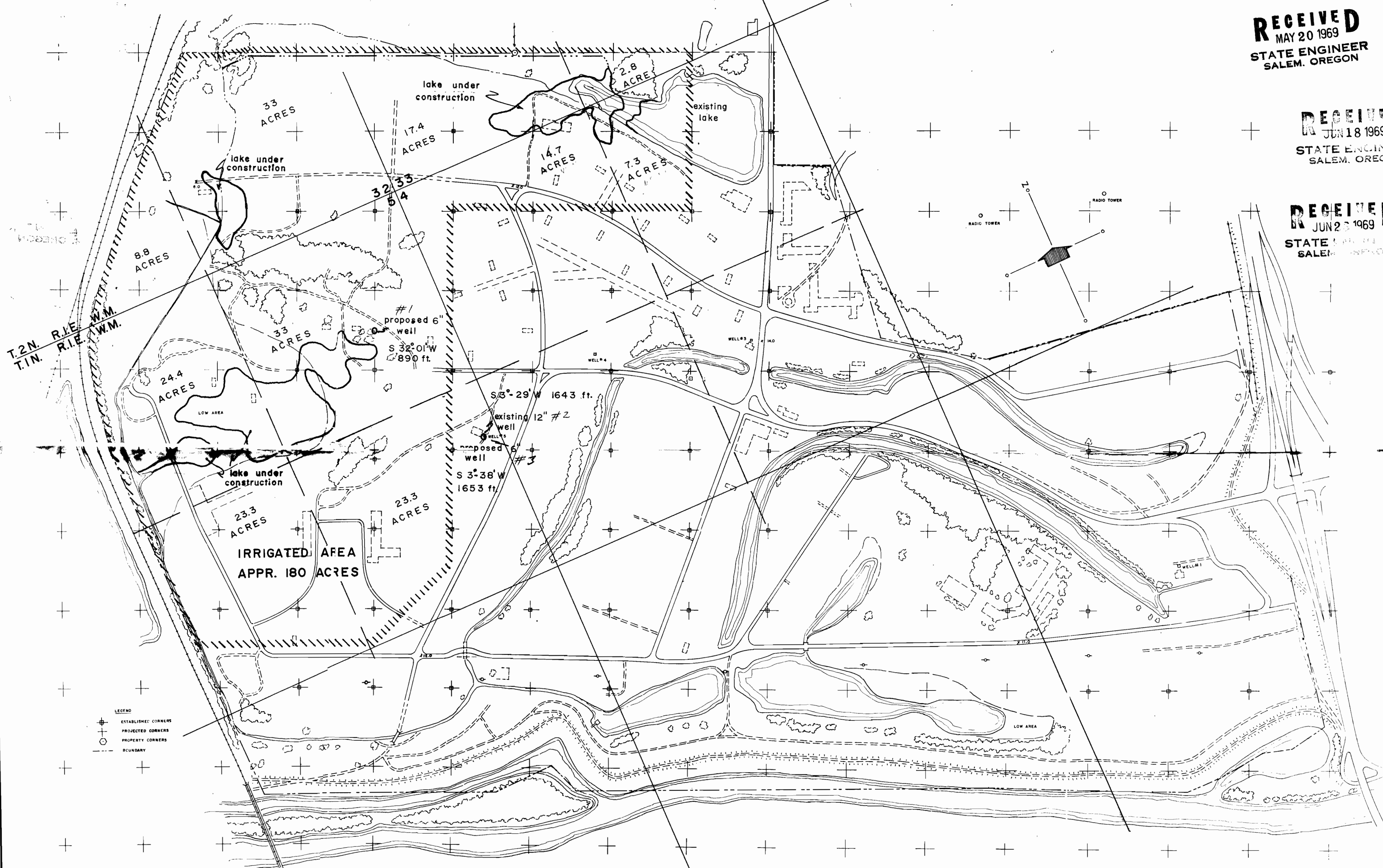
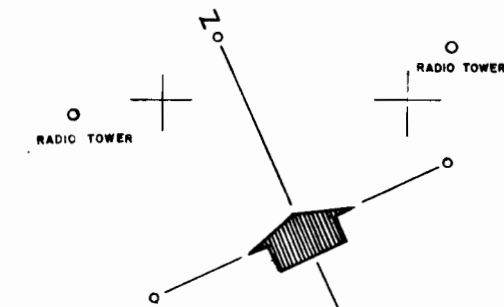


RECEIVED  
MAY 20 1969  
STATE ENGINEER  
SALEM, OREGON

RECEIVED  
JUN 18 1969  
STATE ENGINEER  
SALEM, OREGON

RECEIVED  
JUN 22 1969  
STATE ENGINEER  
SALEM, OREGON

T.2N. R.1E. W.M.  
T.1N. R.1E. W.M.



LEGEND  
ESTABLISHED CORNERS  
PROJECTED CORNERS  
PROPERTY CORNERS  
BOUNDARY

SCALE 1"=400'

Application No. G4886  
Permit No. G4601

WEST DELTA PARK		
BUREAU OF PARKS AND PUBLIC RECREATION PORTLAND, OREGON		
DRUMMOND R. BEAN	HARRY B. BUCKLEY	STATE ENGINEER DEPT. OF PARKS
DATE FEB. 1968	REDUCED FROM PHOTOGRAMMETRIC MAP by Western Mapping Co. S.E.L.	AREA NO 104A
DATE		