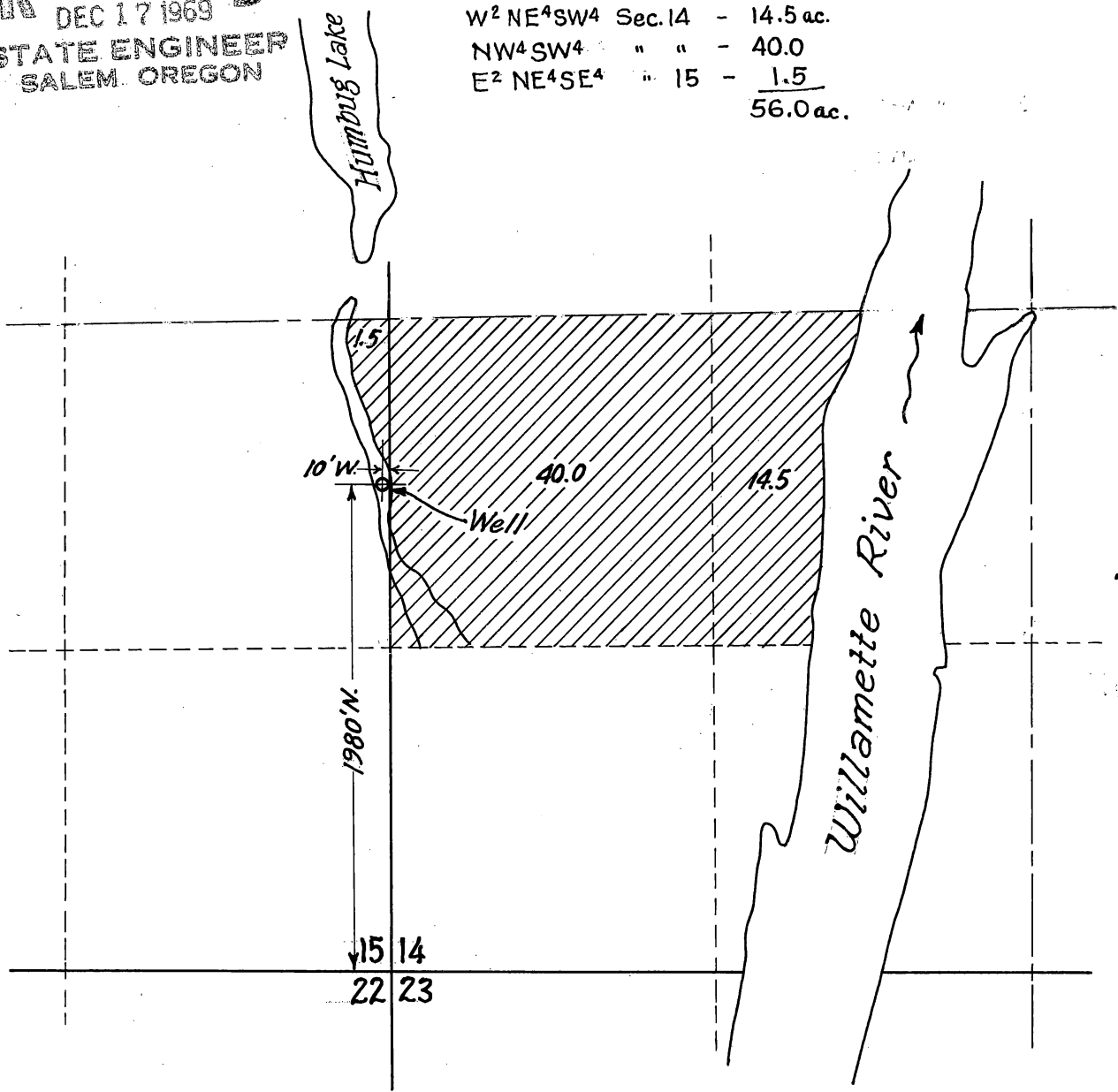


RECEIVED
 DEC 17 1969
 STATE ENGINEER
 SALEM, OREGON

W² NE⁴ SW⁴ Sec. 14 - 14.5 ac.
 NW⁴ SW⁴ " " - 40.0
 E² NE⁴ SE⁴ " 15 - 1.5
 56.0 ac.



Polk County Sec. 14, 15, T.8S., R.4W., W.M.

SCALE 1" = 600'

J. N. Hooper

Application No. 6-5059
 Permit No. G 4769