

SW 1/4 SW 1/4 SECTION 31 TIN R2W W.M.

WASHINGTON COUNTY OREGON

SCALE 1" = 100'

SEE MAP IN 2 31CB

RECEIVED
MAR 30 1970
STATE ENGINEER
SALEM, OREGON

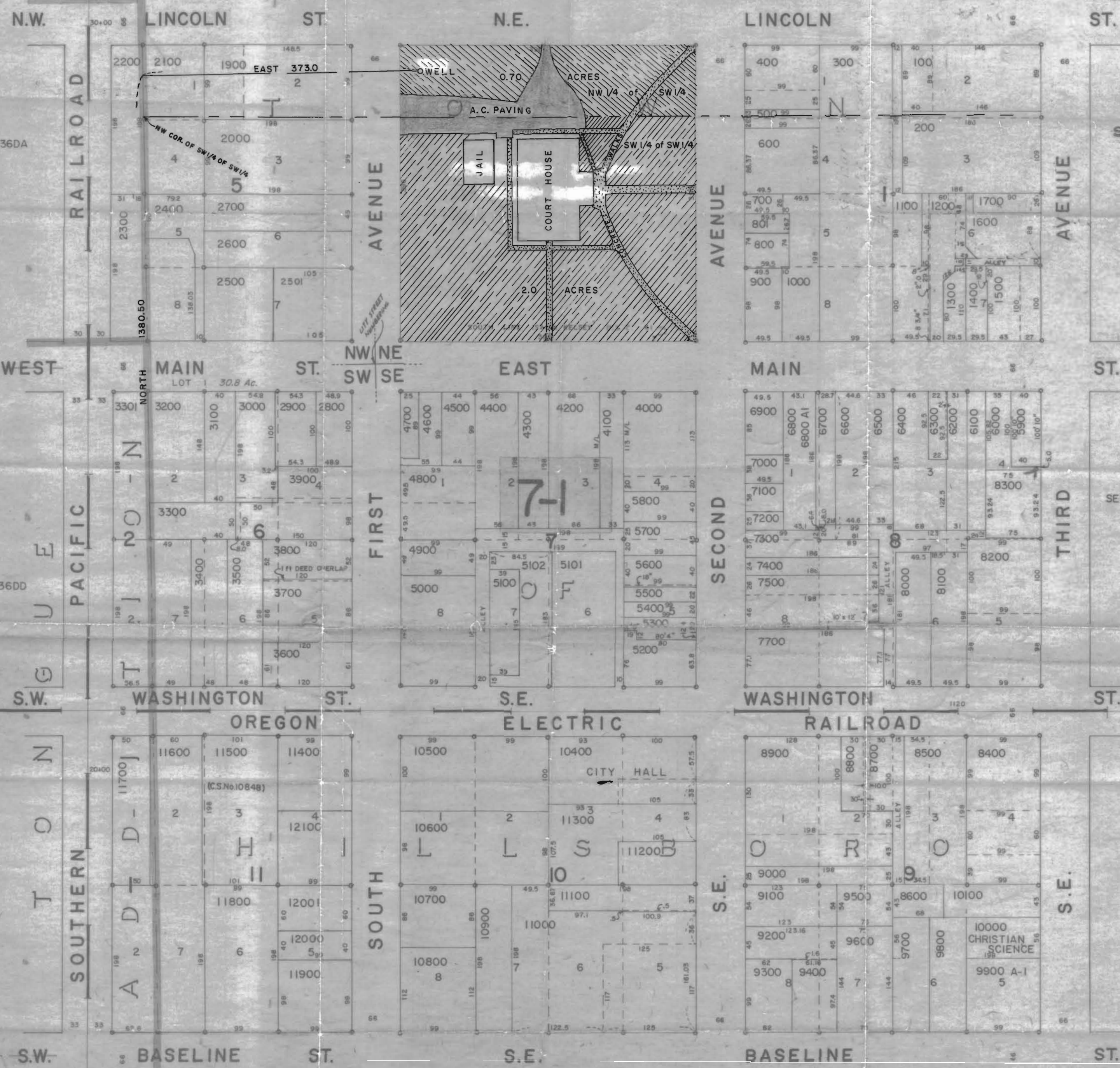
IN 2 31Cc
HILLSBORO
BLOCKS 1, 4-11

Application No. 65144
Permit No. 6-4877

TONGUE ADDITION
BLOCKS 1 & 2
TOWN OF HILLSBORO
BLOCKS 1, 4-11

RECEIVED
APR 28 1970
STATE ENGINEER
SALEM, OREGON

TAX LOT 7900 CANCELLED
7901A1
7901A2
7901A3
7901A4
7901A5
7901A6
7901A7
7901A8
7901A9
7901A10
7901A11
7901A12



SEE MAP IN 3 36DA

SEE MAP IN 3 36DD

SEE MAP IN 2 31CD

SEE MAP IS 2 68B

HILLSBORO
IN 2 31Cc