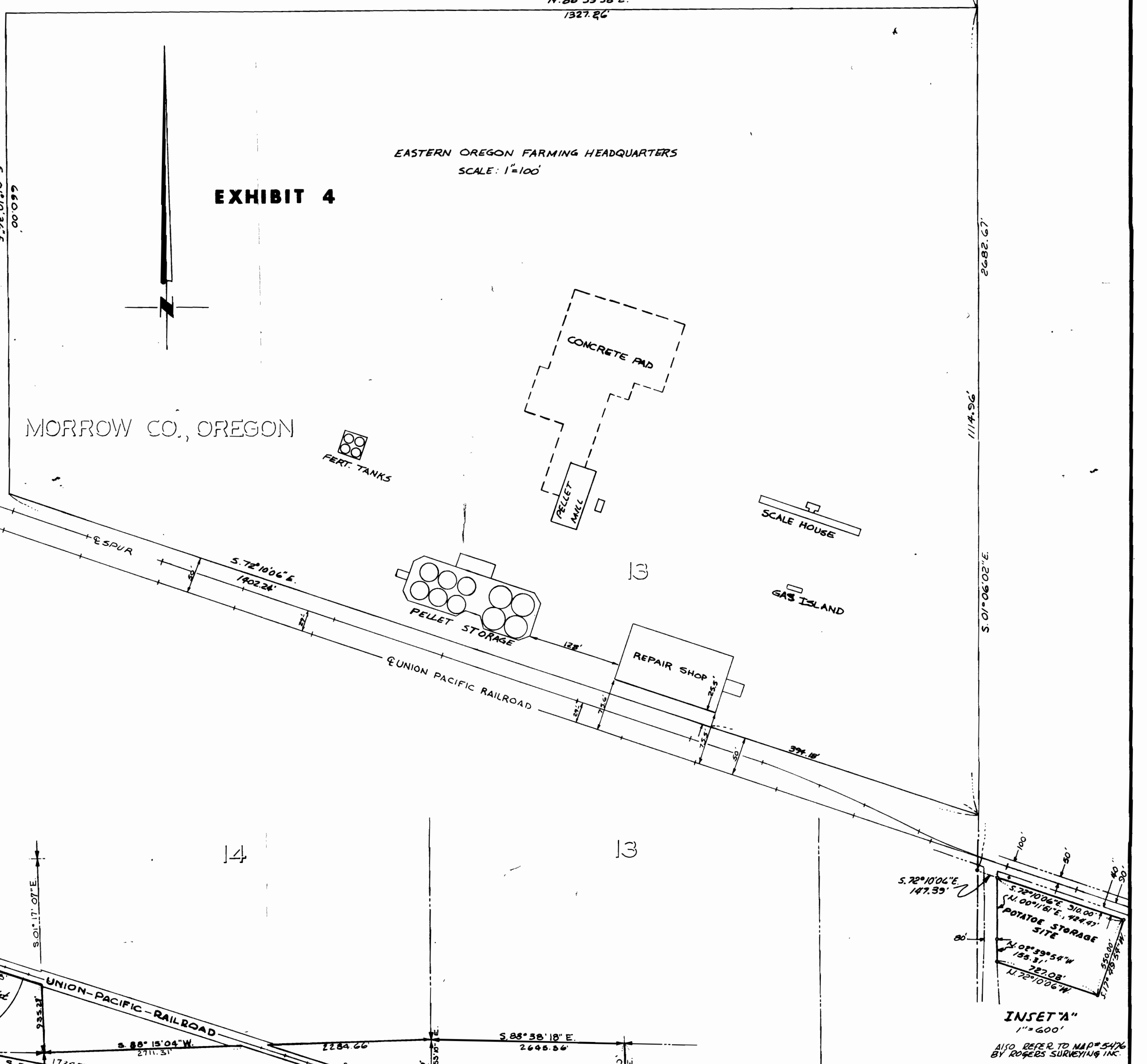


CHEROKEE BOOSTER STATION
INSET "B"
1"=50'

PUMP STATION DETAIL



INSET "A"
1"=500'

11,000
16,500
171,500
17,500
7,000

Received
7-22-76
by L.H.N. in
field for W.R.D.
App # G-6208
Per # G-5172

NOTE 1: Location of West Extension
Irrigation Canal from Morrow
County Auditors Office.

LEGEND

- Corner Not Found
- Corner Found or Reset

- (A) Indicates Easements and Location of Irrigation Pipeline. See legal descriptions in Packet dated Dec. 1, 1975.
- (B) Indicates Easements and Location of Headquarters and Domestic Well. See Legal Sec. in Packet dated Feb. 8, 1976.

REVISED APR 28, 1976 - ADDED CHEROKEE BOOSTER STA (EAST 1/2) & PIPELINE (EAST 1/2)
REVISED APR 20, 1976 - ADDED REEFER LINES TO FRONT 36 24 1/2 AC. INSET "B"
REVISED - MAR 28, 1976 - CORRECTED BEARING FOR 1/4 AC. LINE OF HEADQUARTERS SITE
REVISED - MAR 28, 1976 - CORRECTED DIST. ON 1/4 AC. LINE OF HEADQUARTERS SITE
REVISED - MAR 11, 1976 - ADDED POTATOE STORAGE SITE & INSET "A"
REVISED - FEB 8, 1976

ROGERS SURVEYING INC. P.S.		EASTERN OREGON FARMING CO.	
PROFESSIONAL LAND SURVEYORS		PROJECT	
P.O. Box 507 Richland, Washington Phone (509) 943-3151		At-Built Irrigation Pump Station, Pipeline and Circles	
DATE BY	SCALE	DATE	BY
1975	1"=1000'	Dec. 1, 1975	37575-1114